

CONTIFUGE® STRATOS CONTINUOUS FLOW CENTRIFUGE

The mobile separation expert



Kendro is one of the leading international manufacturers of high quality laboratory centrifuges. With the Contifuge® stratos, Kendro has developed a unique and innovative continuous flow system that enables rapid, reliable separations of large volumes of suspension with a low solid matter content. It is therefore ideal for harvesting bio-products and the examination of water samples.

The Contifuge stratos is offered as a practical table top unit which, with the help of a trolley (available as an accessory), can be used almost anywhere.

LIGHTNING FAST AND MOBILE

Why choose the Contifuge stratos?

Time is money

Compared with discontinuous centrifuges, continuous flow operation with the Contifuge stratos enables extremely short processing times. Time savings of up to 80% are possible.



Simply better

Assembling the rotor is very easy. The empty rotor can be used after just a few simple steps. The rotor, turning at low speed, is then filled with a pump.

What counts is mobility

The Contifuge stratos is the only mobile table top centrifuge of its kind in the world. With the mobile centrifuge stand, it can be effortlessly transported from one location to another at any time.

Optimal control

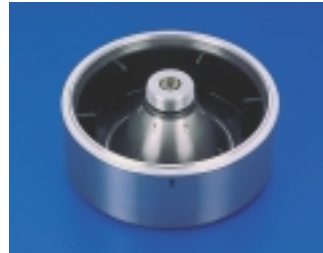
The Contifuge stratos controls the peristaltic pump. It intelligently ensures that the pump switches off during acceleration and braking phases and when the minimum speed falls below 4000 rpm.





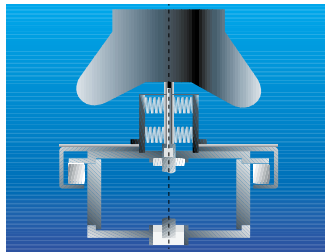
Lid closed

Two locks ensure that the lid closes automatically when pushed gently.



Utmost reliability

The Contifuge stratos operates extremely reliably when complex samples are processed. Even the introduction of air/lather does not affect the system's operation.



Ease of cleaning

Once the centrifuge run is completed, the sediment can be removed with ease. Cleaning and drying of the rotor is equally straightforward.



Active run stability

The Contifuge stratos has a unique spindle drive, active damping and a motor that is fully decoupled from the rotor.

This means that instrument movement and vibration during operation are not transferred to the sample.

Fully autoclavable

Expensive rotors made of titanium or a special aluminium alloy are fully autoclavable. This makes the Contifuge stratos particularly suited to bio-science and medical applications.



Rotor diversity

The Contifuge stratos can be quickly and easily converted for discontinuous operation. Eleven different rotors and a variety of adaptors are available for highspeed operation. The system therefore has the most flexible range of accessories available in the entire table top centrifuge market.

Areas of application

THE NUMBER 1 IN LIFE SCIENCE

The Contifuge stratos was developed for the separation of low density particles from aqueous suspensions with a low solid content – a sophisticated task. This mobile, time and cost saving system is ideally suited to a number of different applications.

This centrifuge has proven its worth during harvests of fermenter cultures and examinations of many different water samples.

Sewage examinations

- Separation of sediments and suspended matter

Limnology

- Extraction of sediments and suspended matter from inland water

Marine research

- Enrichment of plankton

Drinking water purification

- Extraction of suspended matter as an alternative to filtration



Biochemistry

- Harvest of plant and animal cell cultures, precipitation of protein complexes

Cytology

- Enrichment of cells: bacteria, algae, yeasts, mammalian cells

Medicine

- Harvest of human and animal cell cultures

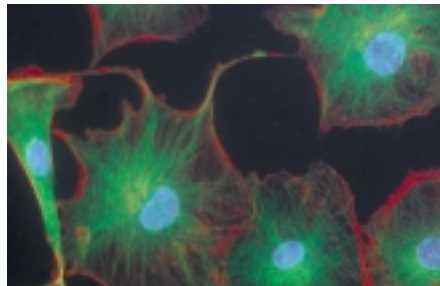


Photo: Soft Imaging System GmbH, Münster

Immunology

- Separation of immunisation globulins/vaccine production, preparation of macrophages

Microbiology

- Harvest of bacteria cultures and virus lysates

Gene technology

- Cultivation of recombination bacteria, yeasts and mammalian cells

Biotechnology

- Harvest of fermenter cultures in large quantities

Brewery process engineering

- Separation of yeasts

Pharmaceutical industry

- Pelleting of proteins/protein complexes, e.g. growth factors

Dairy industry

- Preparation of starter cultures for the dairy industry

Chemical industry

- Concentration of metal and plastic particles, sedimentation of metal hydroxides



Faster as a result of continuity

A CONVINCING COMPARISON

Ideal for large volumes

The Contifuge stratos – a high-speed table top centrifuge with continuous flow operation – fulfils a particularly important task in the Biofuge family: it can process large volumes (e.g. 50 litres) from fermenter cultures, for instance, quicker and more effectively than conventional centrifuges.

No transfer, no division into portions

It therefore represents a convenient alternative to conventional batch processing. Laborious transfers and division of fermenter contents are no longer necessary.

Enormous time savings

Discontinuous centrifugation is very labour intensive and time consuming where large volumes

are involved. Depending on the rotors' capacity, repeated runs are necessary. The cell harvest is made up of a large number of relatively small pellets.

Time savings when processing a bacterial culture:

- Using a floor standing centrifuge with a 6 x 500 ml rotor (batch processing), 20 l of culture was harvested in 2 hours and 55 minutes.
- With a Contifuge stratos, only 40 minutes were needed to process the same amount.

Very practical – everything's in the rotor

- Whereas 40 different pellets are generated with batch processing, the entire bacterial culture is contained inside the rotor when using the Contifuge stratos.

Discontinuous centrifugation

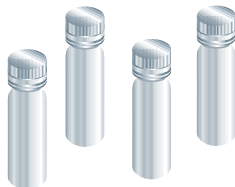
500 ml bottles



7 runs at 20 mins.
7 x loading and unloading at 5 mins. = 2 hrs 55 mins.



40 bottles/40 pellets

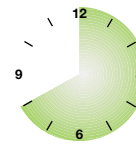


Continuous centrifugation

500 ml/min



1 run: 40 mins.



1 rotor/1 pellet



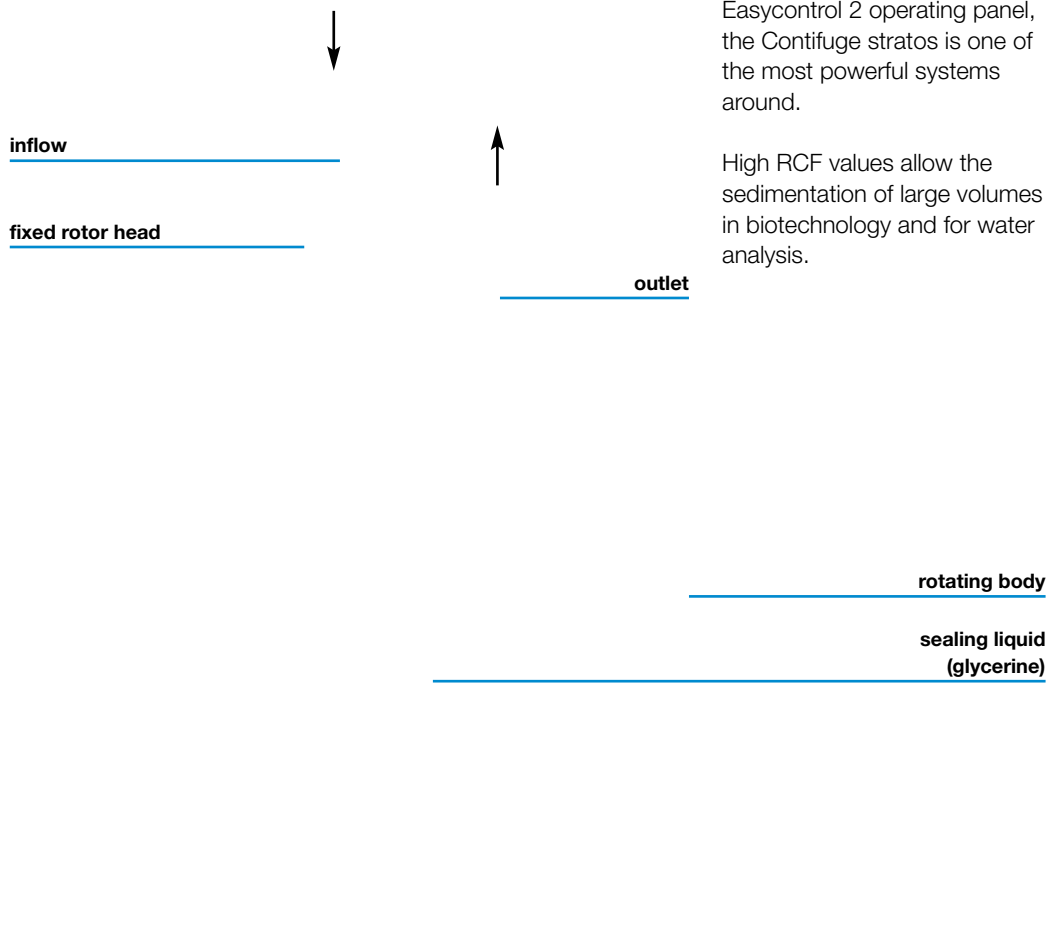
COMPACT SYSTEM FOR LARGE VOLUMES

And it all works very easily

The fixed rotor head with inlet and outlet rises above the centrifuge lid.

Using a peristaltic pump, the suspension is fed into the rotor body via a rotating joint. The sample flows through the chamber, and sediment particles gather against the rotor walls, while clarified medium is removed.

When the suspension is completely processed or the rotor's intake capacity is reached, the centrifuge is stopped. The rotor is then opened, and the pellet harvested.



Intelligent centrifugation – Contifuge stratos

The Contifuge stratos sensibly combines the benefits of a modern highspeed table top centrifuge with the continuous flow principle.

This model is characterised by particularly intelligent technology. With its unique spindle drive, the electronic imbalance recognition system and the Easycontrol 2 operating panel, the Contifuge stratos is one of the most powerful systems around.

High RCF values allow the sedimentation of large volumes in biotechnology and for water analysis.

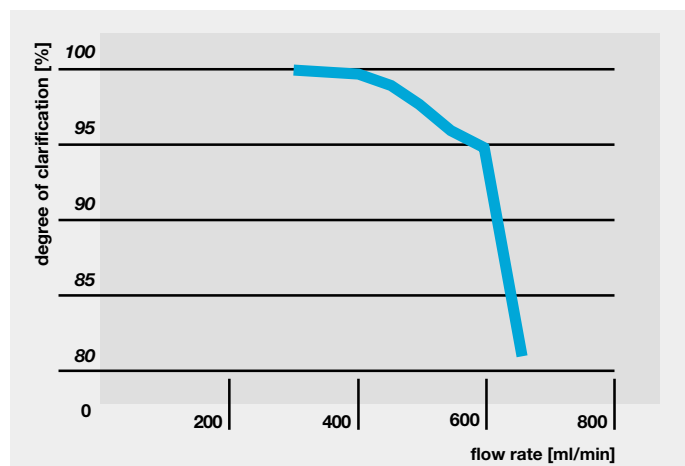
Separation of particles by means of centrifugation in a Heraeus continuous flow rotor

EXAMPLE OF POSSIBLE APPLICATION – CELL HARVESTING

Test parameters

organism	<i>E. coli</i>
volume	20 l
optical density (578 nm)	1.2
rotor	75003049
speed	15,000 rpm
flow rate	320 – 650 ml/min

Centrifugation separation capacity



Increase in degree of clarification by decreasing the flow rate

Other applications from the field of cell harvesting

organism	particle size μm	flow rate ml/min	speed rpm	degree of clarification %	comments
<i>Acetobacter woodii</i>	1 – 2	500	15,000	99	difficult to sediment
<i>Methanosarcina barkeri</i>		200	15,000	99	strictly anaerobic
<i>Sulfolobus spec.</i>	2 – 3	440	15,000	99	thermophile
<i>Clostridium acetobutylicum</i>		500	15,000	to 99.7	anaerobic OD _{578 nm} = 3.6
<i>Saccharomyces cerevisiae</i>	3 – 5	500	8,000	98	
Insect cells/ Sf9 virus culture	16	200	6,000	n.d.	very sensitive cells, nearly complete separation with high v_{rot}
<i>Hela</i> -cells	10	650	9,500	n.d.	90 % vigorous
Animal cells undergone lysis (MKS and RNA virus residue)		400	10,000	95	

Other applications

Macrophages from cattle lungs	7 – 20	760	4,100	n.d.
Plankton	1 – 5	200	6,000	n.d.
Suspended matter from River Spree water (heavy metal)	0.2 – 1	360	17,000	n.d.

Example application

The harvest of an *Escherichia coli* culture with a straight, stick-like bacterium (1.1 – 1.5 x 2.6 – 6.0 μm) is described below.

20 l of an *E. coli* culture in a LB medium were harvested at 15,000 rpm with a varying flow rate. The optical density was determined from the residue and the percentage degree of clarification was calculated from it, i.e. the centrifugation separation capacity was ascertained.

Result

The degree of clarification, depending on the flow rate, is illustrated in the graph. An increase in the flow rate in excess of 500 ml/min was connected to a considerable decrease in the separation performance. Within 40 minutes the entire 20 l culture was harvested with a 98% degree of clarification.

Centrifugation parameters in general

A sample's degree of separation depends on the centrifugal force and the flow rate. As with "traditional" centrifuges, acceleration is determined by the rotor speed and increases by the speed squared. The continuous flow speed is adjusted via the peristaltic pump's power. A decrease in the flow rate improves the separation performance as a result of the sample's prolonged length of stay in the rotor.

Application tip

Fluid culture media containing large volumes of yeast extract or other complex ingredients tend to produce large amounts of lather. In this case there was a high production of lather due to the bacteria's formation of gas. However, this did not impair the separation performance in the Contifuge.

TECHNICAL DATA/ORDER NUMBERS

Contifuge stratos Refrigerated Highspeed Table Top Centrifuge

Model	Contifuge stratos	
Drive	induction drive without carbon brushes	
Control	microprocessor controlled via Easycontrol II	
Min./Max speed	(rpm)	300/23,000 adjustable in 10 rpm increments
Max. RCF	x g	50,377
Max. capacity	ml	400 ml sediment or 4 x 180 ml
Braking/acceleration curves	9/9	
Programs	9 + 1 pre-cooling program	
Noise level at max. speed	dB (A)	<60
Run time	0 – 9 hrs 59 mins., continuous operation, alternatively 0-99 hrs	
Temperature range	°C	-19 to +40
Functions	RCF pre-selection, Quick-run	
Rotor recognition	automatic	
Imbalance recognition	electronic, depending on speed and ideally suited to every rotor	
Construction	galvanised steel chassis with armoured rotor chamber	
Safety features	lid lock and interlocks (two automatic locks)	
External dimensions (h/w/d)	mm	395 x 640 x 595
Weight (without rotor)	kg	134
Power consumption	W	1,400 (cooling system approx. 900)
Standards	manufactured and tested in accordance with EN 61 010-2-020, EN 50 081-1, EN 50 082-1, no approval required in accordance with UVV VBG 7z	



Rotors and accessories

Order no.	75003049	75003054
Recommended area of application	separation of bacteria, cell debris, suspended matter	harvesting of animal and human cells
Material	titanium	aluminium with composite material coating
Max. sediment volume	400	400
with high performance insert	50	50
Autoclavable	indefinitely autoclavable	indefinitely autoclavable
Chemical resistance	to a great extent corrosion resistant	similar to PTFE
Max. speed	rpm	17,000
Max./min. radius	cm	7.75/5.00
with high performance insert	7.75/7.25	7.75/7.25
Max. RCF	x g	25,040
Acceleration/braking time	s	80/60
Optimal flow rate	ml x rpm	200 to 600

Order numbers

Model	Equipment	Order no.
Contifuge stratos	230 V, 50/60 Hz	75005283
	200/208 V, 50/60 Hz	75005285
Titanium continuous flow rotor	for 400 ml sediment	75003049
Aluminium continuous flow rotor	for 400 ml sediment	75003054
High performance insert	polypropylene	75015339
Trolley (h x w x d)	764 x 715 x 590 mm	76000083
Peristaltic pump	230 V/50 Hz, max. pump volume 1820 ml x rpm	75003503
	can be switched to 120 V/60 Hz, max. pump volume 1820 ml x rpm	

The heart – the rotor

Continuous flow rotors developed by Kendro are designed to ensure gentle sedimentation of cells without lysis. The titanium rotor has proven to be ideally suited to fermenter harvesting of bacterial cultures. It is chemically inert and is distinguished by its high maximum speed. An aluminium rotor is offered as an economical alternative. It is worth emphasising that for some applications – e.g. the harvest of human or animal cells – lower speeds are sufficient, and these can be achieved with the aluminium rotor. As with the titanium rotor, it is fully autoclavable (20 mins., 121 °C). It has a high quality special coating, the chemical resistance of which is similar to that of Teflon.



titanium rotor



aluminium rotor

Great – the high performance insert

This polypropylene insert improves the rotor's sedimentation capability, particularly for small particles and those with a low density, whilst reducing the sedimentation capacity (50 ml). It has been developed for the separation of suspensions with a low solid material content. A typical area of application is the separation of fine matter in suspensions for water examinations.



Easy – the rotor assembly

For every particular rotor there is an adaptor which houses the automatic rotor recognition system. This avoids any possibility of confusion and guarantees utmost safety as a result of appropriate speed restrictions. Work with the Centrifuge stratos is similarly straightforward, as with traditional centrifuges.



- The appropriate adaptor is screwed onto the drive shaft.
- The rotor is simply put on top of the adaptor.
- The centrifuge lid is closed.
- Tubing is fitted to the inlet and outlet points.

Mobile – the trolley

A movable centrifuge table – on which the pump, sample containers and a magnetic stirrer can be placed – makes the entire system mobile. It can be transported to any location.



The trolley constitutes an open, castor-mounted casing in which sample bottles and a magnetic stirring system can be installed. Two locks on the front castors improve stability during operation. The trolley's reinforced metal construction is very sturdy and virtually free from vibration.

Smart – the integrated pump

To maintain defined and reproducible flow rates, the use of a peristaltic pump with a pump range of 100 to 900 ml x min⁻¹ is recommended. Kendro offers a peristaltic pump which is controlled via the centrifuge. A minimum speed of 4000 rpm is required to fill and operate the rotor. The centrifuge is equipped with additional electronics and a socket for the pump control which stops the pump as



soon as the speed falls below this value. The pump is also automatically switched off during acceleration and braking. When a constant speed is achieved, it resumes operation automatically.

WE ARE ONLY SATISFIED IF YOU ARE

Many people talk about service – Kendro fills this idea with life. You will notice this, for example, in the quality of our advice – which is individually geared towards your wishes, ideas and requirements. Our convincing solutions are exactly tailored to your specific needs.

And we will continue to be there for you after your purchase, as a partner who quickly and competently assists in all matters and with any problems. For instance, within the bounds of a maintenance agreement with a 24-hour service – even at weekends and during bank holidays. Or with other service related matters, e.g. calibration, reference measurement, application advice, repairs or the exchange of spare parts – our commitment helps you quickly and avoids red tape.

The Kendro Service Team: a good feeling to know that we are at your side.

The fax for all who want to know more ... +49/6172/21 166

Would you like to receive information on other centrifuges? If so, please tick the products that are of interest or give us a call. We will provide you with detailed documentation as quickly as possible.

Microlitre Centrifuges

Biofuge® pico/fresco, Biofuge® vito,
Biofuge® primo, Biofuge® primo R

Highspeed Centrifuges

Biofuge® stratos

Title, First name, Surname

Institute/Dept.

Company/ University /Clinic

Field of work

Street

Town/Postcode

Laboratory Dealer

Telephone/Fax

Australia	Kendro Laboratory Products · Lane Cove DC · NSW 2066 · Tel. +61 (02) 9936 1540 · Fax. +61 (02) 9427 9765 · info@kendro.com.au
Austria	Kendro Laboratory Products GmbH · Wien · Tel. +43 (1) 801 40-0 · Fax +43 (1) 801 40 40 · office@kendro.at
Canada	Kendro Laboratory Products International Sales · Newtown · USA · Tel. +1 (203) 270-2080 · Fax. +1 (203) 270-2166 · info@kendro.com
Denmark	Kendro Laboratory Products AB · Albertslund · Tel. +45-43 62 46 47 · Fax +45-43 62 46 41 · info@kendro.dk
France	Kendro Laboratory Products · Courtaboeuf cedex · Tel. +33 (1) 69 18 77 77 · Fax +33 (1) 60 92 00 34 · info@kendro-lab.fr
Germany	Kendro Laboratory Products GmbH · Hanau · Tel +49 (6181) 35-300 · Fax: +49 (6181)35-59 44 · info@kendro.de
India	Kendro Laboratory Products (India) Pvt. Ltd. · New Delhi · Tel. +91 (11) 618 58 40 · Fax +91 (11) 618 53 97 · kendro.india@vsnl.com
Italy	AHSL S.p.A. · Cavenago Brianza · Tel. +39 (02) 95 08 11 · Fax +39 (02) 95 08 12 77 · ahsidue@tin.it
Poland	Kendro Spółka z.o.o. · Warszawa · Tel. +48 (22) 663 43 23 · Fax +48 (22) 663 43 25 · kendro.warszawa@kendro.com.pl
Portugal	Heraeus S.A. · Cacem · Tel. +351 (1) 912 08 65 · Fax +351 (1) 912 08 60 · heraeus@mail.telepac.pt
PR China	Kendro Laboratory Products (H.K.) Ltd. · Hong Kong SAR · Tel. +852 2711-3910 · Fax +852 2711-3858 · 106122.205@compuserve.com
Spain	Heraeus S.A. · Madrid · Tel. +34 (91) 358 19 96 · Fax +34 (91) 358 20 67 · heraeus@mx3.redestb.es
Sweden	Kendro Laboratory Products AB · Upplands Väsby · Tel. +46 (8) 59 07 21 90 · Fax +46 (8) 59 03 16 00 · info@kendro.se
Switzerland	Kendro Laboratory Products AG · Zürich · Tel. +41 (1) 454 12 12 · Fax +41 (1) 454 12 99 · kendro-ag@swissonline.ch
	Kendro Laboratory Products SA · Carouge-Genève · Tel. +41 (22) 343 21 67 · Fax +41 (22) 342 38 31 · kendro-sa@swissonline.ch
U.K./Ireland	Kendro Laboratory Products Limited · Bishop's Stortford · Herts · Tel. +44 (1279) 827700 · Fax +44 (1279) 827750 · kendro@kendro.co.uk
USA	Kendro Laboratory Products L.P. · Newtown · Tel. +1 (800) 522-7746 · Fax. +1 (203) 270-2166 · info@kendro.com

All other International Sales in Europe, Middle East, Africa

Kendro Laboratory Products International Sales · Hanau · Germany · Tel. +49 (6181) 35-300 · Fax +49 (6181) 35 59 44 · info@kendro.de

Asia Pacific

Kendro Laboratory Products (H.K.) Ltd. · Hong Kong SAR · Tel. +852 2711-3910 · Fax +852 2711-3858 · 106122.205@compuserve.com

Latin America

Kendro Laboratory Products International Sales · Newtown · USA · Tel. +1 (203) 270-2080 · Fax. +1 (203) 270-2210 · info@kendro.com

Internet

<http://www.kendro.com> · <http://www.heraeus-instruments.com>



Kendro Laboratory Products – a worldwide company formed by the merger of Heraeus Instruments and Sorvall.

Should your country not be included in the address list, please contact Kendro Laboratory Products International Sales in Germany or USA.
Subject to change without notice. product design wolf raimann wiesbaden

Printed in Germany 12C 7/99 N 4t Frottscher