

Bio - Optica

Improving Pathology

Automatic station HPC940

Stainer & Coverslipper



We have reshaped the standards of the anatomical pathology labs

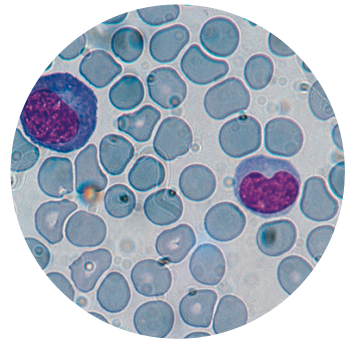
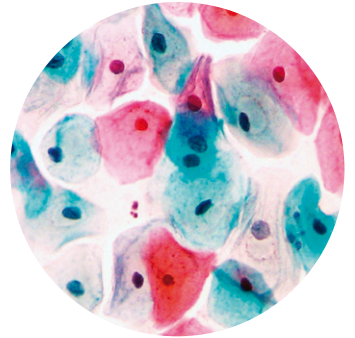
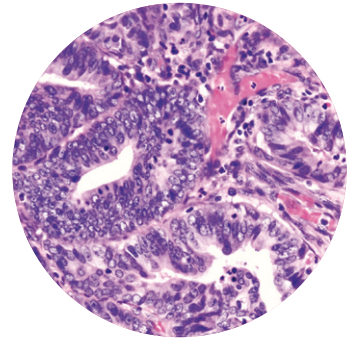
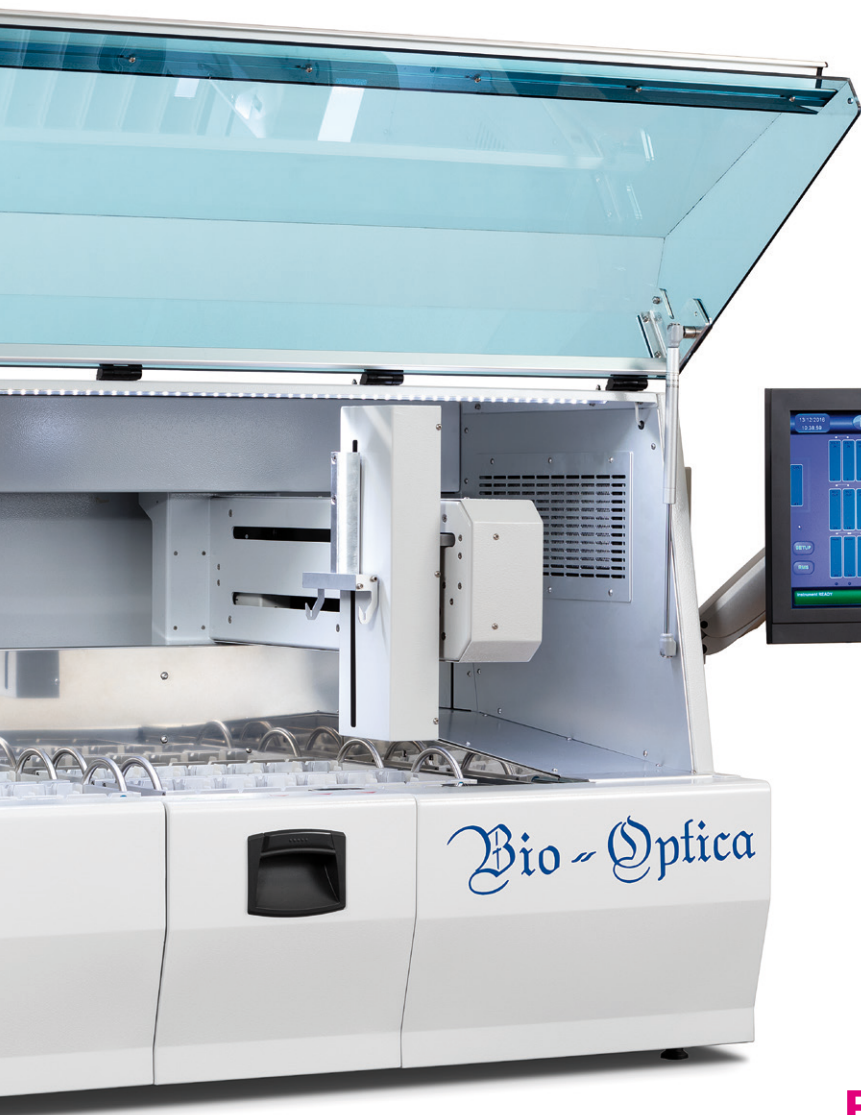
Versatility and reliability in your lab



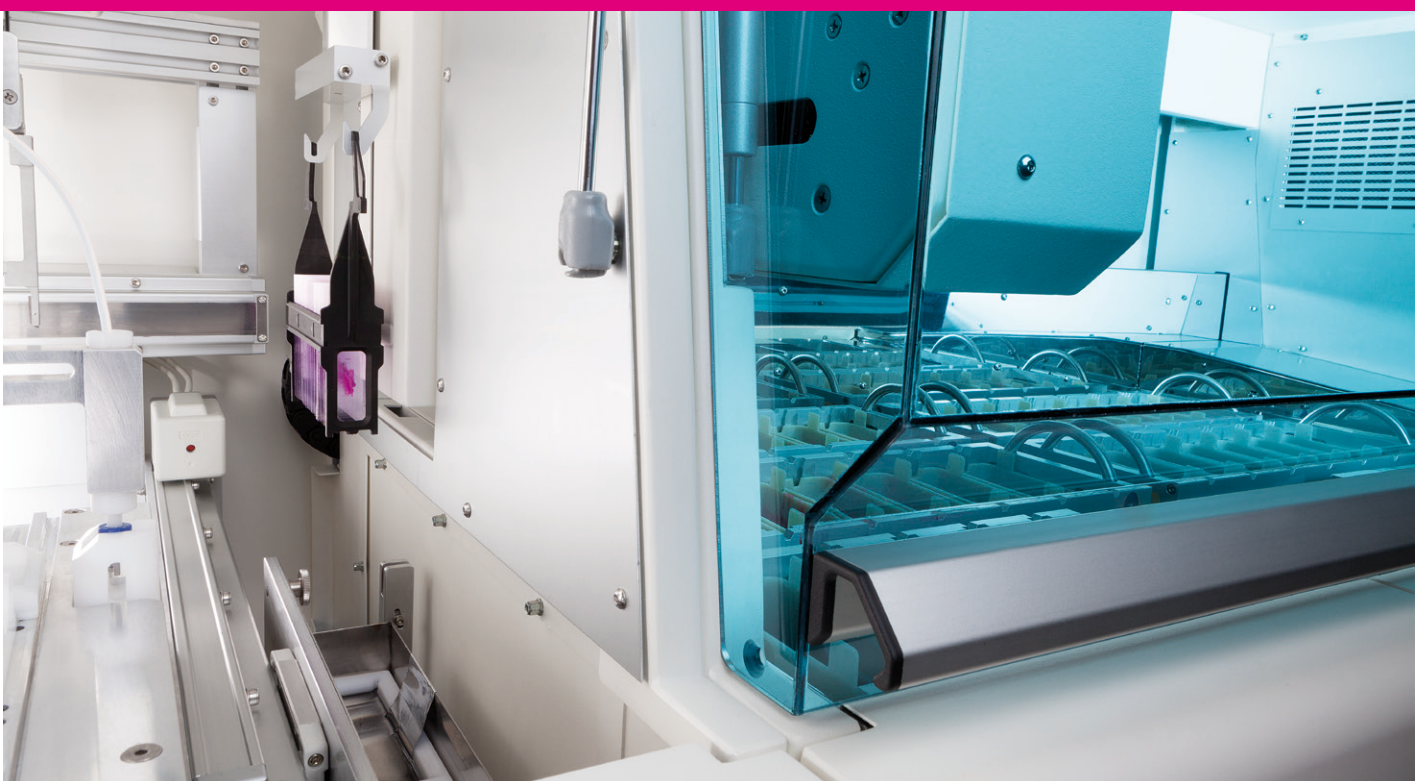
**Innovative and unique exit system of mounted glass slides,
which improves and simplifies the user's activity**

Instrument's general features:

- Integrated colour touch screen, with indication of all working parameters
- Modular system
- Intuitive and easy to use menu
- Multilingual software
- Acoustic and optical signal for the end of staining and mounting cycle
- Acoustic and optical warning in case of problems
- Possibility to load slide baskets continuously, even when the stainer is closed
- Automatic cleaning of the dispensing needle, after every cycle
- Vapour's aspiration system with integrated filter (no need of aspirated hoods)

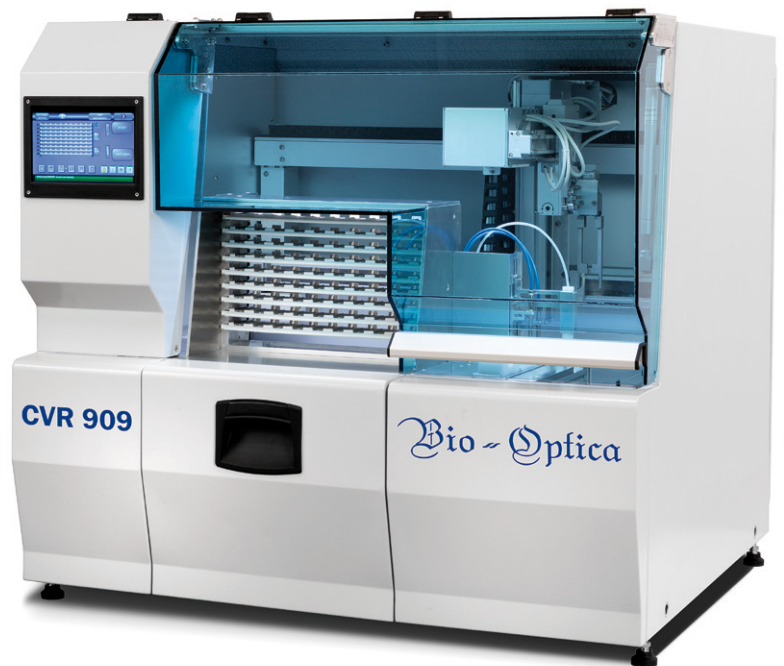


**Brilliant staining and
perfect mounting**



Coverslipper features:

- Possibility of loading continuously slide baskets (30 slides capacity each)
- It can mount coverglasses with different sizes (24 x 40/50/60 mm), with rapid holder substitution
- Possibility to work in “wet” or “dry” mode
- Indication of mistakes during slides mounting
- Regulation of dispensing offset (position, quantity and speed) without needle substitution
- Mounting medium bottle with level sensor, rapid connection and easy to substitution
- Frontal exit for empty slide baskets



Innovative system with advanced technology

Perfect mounting and software designed around the operator to simplify and speed up the work in the lab



Mounting steps

The coverglass is taken by a suction cup electronic system while the dispensing needle moves from its stand-by position in the solvent
(Img. 1)

The glass slide is brought to the mounting site by a mechanical arm and the medium is dispensed on the section
(Img. 2)

The coverglass is mounted through a particular movement of the suction cup system which avoids bubble air formation
(Img. 3)

The mounted slide is put on a dedicated tray and the dispensing needle comes back to stand-by position into the cleaning solvent
(Img. 4)

Revolutionary and unique automatic mounted slides exit system

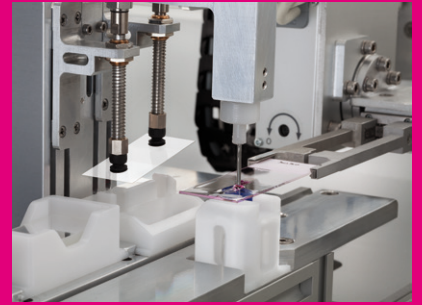
In spite of the other coverslippers on the market, our instrument is able to put the mounted slides directly on dedicated trays in order to avoid waste of time for the users.

When the tray is complete, it is automatically pushed forward in order to:

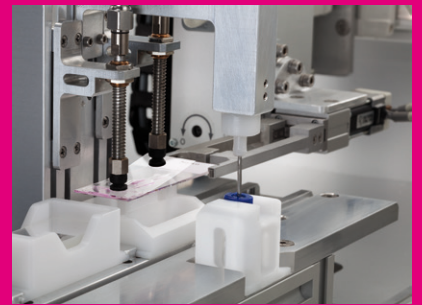
- advise the completion of the tray
- ease the catch for the user



Img. 1



Img. 2

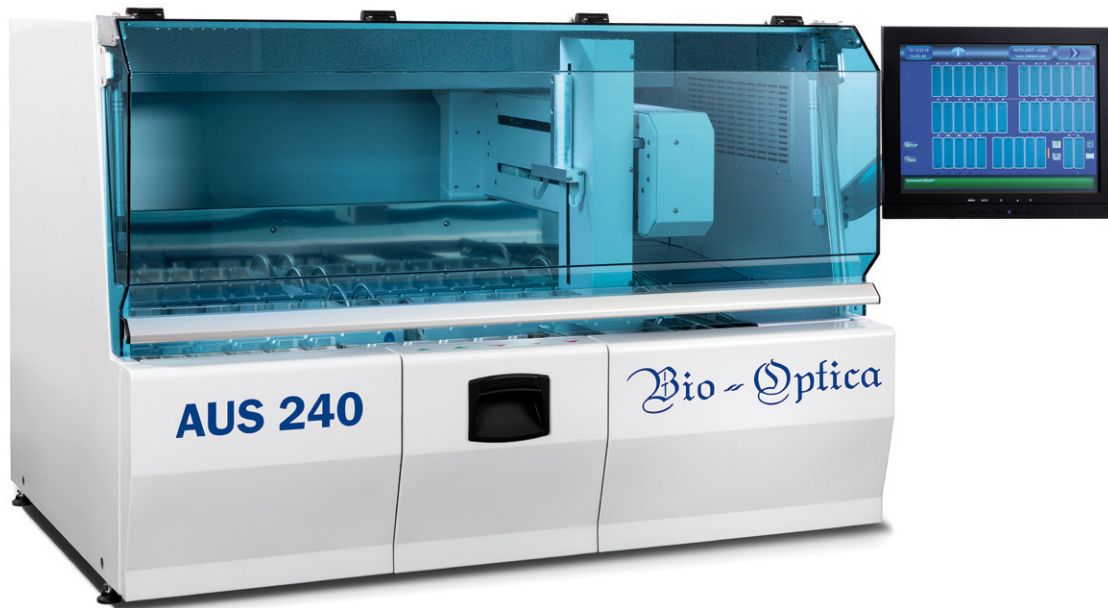


Img. 3



Img. 4

Bio-Optica AUS 240



Stainer features:

- Continuous loading of slide baskets (30 slides capacity each)
- Simultaneous staining of 10 baskets (using the same staining protocol)
- 40 total stations (28 for reagents, 5 for washing, 2 for drying, 2 for loading and 3 for unloading)
- Basket agitation “waving” which guarantees reagent homogeneity and reduction of residue
- Possibility to save more than 50 programs
- Colour touch screen and possibility of transferring the reports on external memory
- “Antidripping System” completely settable by the user through software
- Integrated UPS system
- “Reagent Management System” which allows to set the maximum number of baskets which can pass through a reagent
- Settable password (one level)

New model, with improved performances



CONSUMABLE

Bio-Optica microscope slides

Bio-Optica microscope slides, cleaned, degreased without dust and scratches, are available in different types and colours. They can also be used with printers.



Bio-Optica coverglasses

Bio-Optica coverglasses are of high quality and without selective absorption. Available in three different measures (24x40, 24x50 and 24x60 mm), they are designed to work in the automatic coverslipper.



Mounting medium

Biomount HM, a xylene-based medium for histologic and cytologic samples; recommended for the automatic coverslipper.



Bio-Optica stains

Bio-Optica high quality routine stains guarantee brilliant colours and reproducible results. They include reagents for histology and cytology. The protocols are optimised for the use into the automatic station and they guarantee high quality staining.

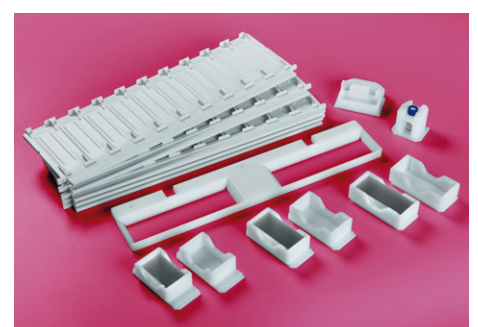


ACCESSORIES

Trays and holders

Coverglasses holders with three different measures. Dispensing needle cleaning system to guarantee the continuous work of the instrument without interruptions and obstructions. Dedicated slide trays (10 places) which can be extracted and piled for an easy transport.

Bio-Optica also provides adaptors for slide baskets of the most popular automatic stainers on the market.



● AUTOMATIC STATION	HPC 940	40-600-000 / 40-600-050 (with oven)
Dimensions and weight	Dimensions (l x h x p)	2010 x 780 x 770 mm
	Monitor (l)	+ 400 mm
	Worktop (l x p)	2010 x 770 mm
	Weight	230 Kg
Electrical data	Power supply	115 ÷ 230 V
	Frequence	50 ÷ 60 Hz
	Electrical power	1,45 kW
Working environment	Temperature / Humidity	15 ÷ 30 °C / 70% max

● COVERSLIPPER	CVR 909	40-500-000
Dimensions and weight	Dimensions (l x h x p)	860 x 780 x 770 mm
	Worktop (l x p)	860 x 770 mm
	Weight	80 Kg
Electrical data	Power supply	115 ÷ 230 V
	Frequence	50 ÷ 60 Hz
	Electrical power	0,6 kW
Working environment	Temperature / Humidity	15 ÷ 30 °C / 70% max
Productivity		180 slides/hour (directly on the tray)
Mounting Medium	Bottle volume	500 ml
Mounted slides output		9 trays with 10 places each

● STAINER	AUS 240	40-400-300 / 40-400-350 (with oven)
Dimensions and weight	Dimensions (l x h x p)	1220 x 780 x 770 mm
	Monitor (l)	+ 400 mm
	Worktop (l x p)	1220 x 770 mm
	Weight	155 Kg
Electrical data	Power supply	115 ÷ 230 V
	Frequence	50 ÷ 60 Hz
	Electrical power	0,8 kW
Working environment	Temperature / Humidity	15 ÷ 30 °C / 70% max
Internal composition	Reagent stations	28 (485 ml capacity)
	Rinse stations	5 (with pressure and flow regulator)
	Loading stations	2
	Unloading Stations	3
	Heated stations	2 (60 °C ±1 °C)
Productivity		10 basket of 30 slides maximum, with the same protocol
Connections	Loading tube H ₂ O (Ø)	10 mm
	Exhaust pipe H ₂ O (Ø)	18 mm (¾")
Exit	USB ports	4
	Free contact	1

Headquarter
 Bio-Optica Milano S.p.a.
 via San Faustino, 58
 20134 Milan - ITALY

Telephone
 +39 02 2127131

Fax
 +39 02 2154155

Mail
 info@bio-optica.it

Web
 www.bio-optica.it