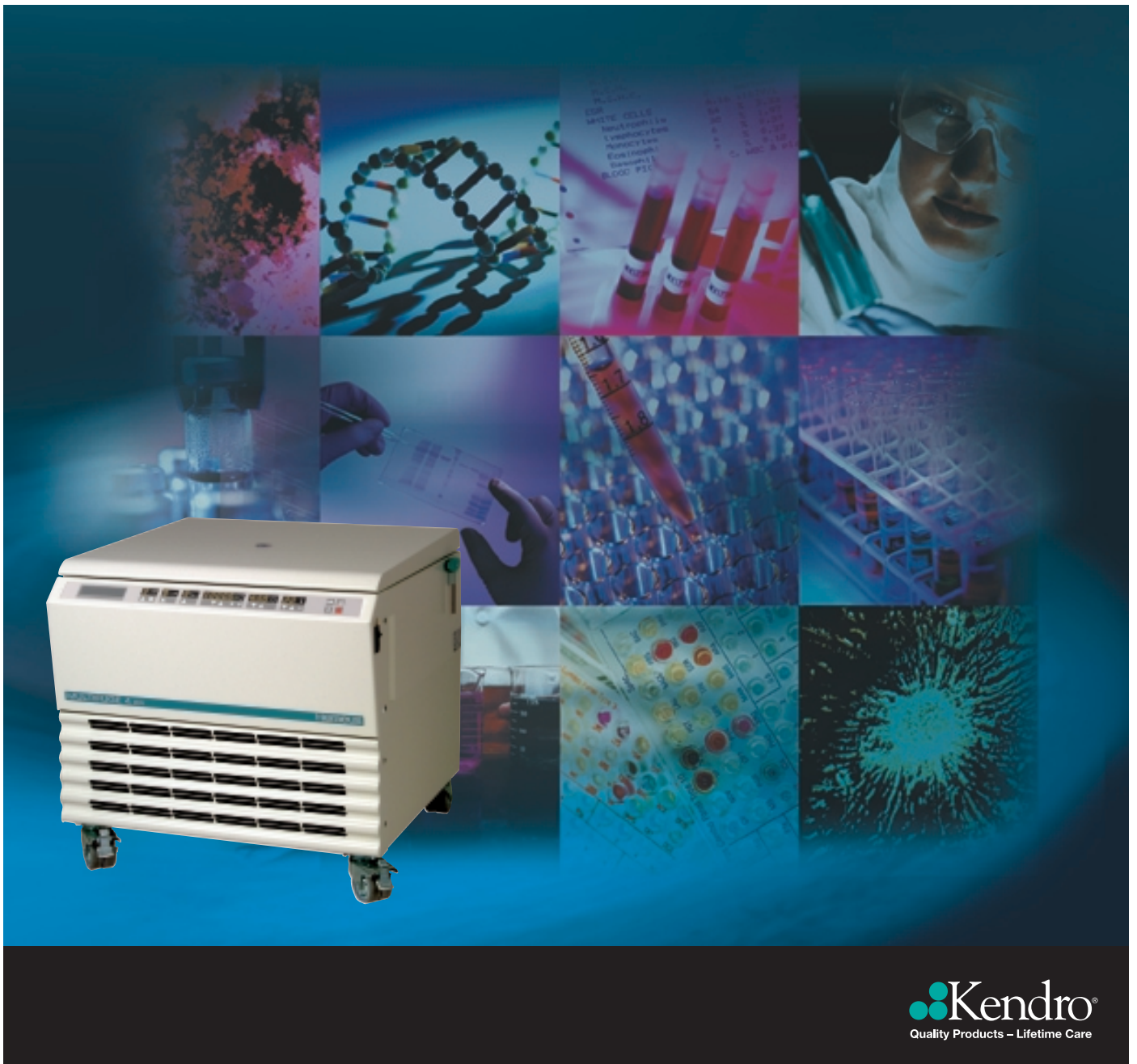


## PURE KNEEWELL PROCESSING POWER HERAEUS® MULTIFUGE® 4 KR

Personal high-throughput refrigerated general purpose centrifuge



# IN A CLASS OF ITS OWN

## The Multifuge® 4 KR personal kneewell centrifuge is an instrument that's literally in a class of its own.

No other centrifuge can offer the capacity of a floor model **and** the convenience of underbench storage. The Multifuge® 4 KR frees valuable bench space while still being conveniently located close at hand in your own laboratory.

The Multifuge® 4 KR offers the highest capacity for a wide range of popular tubes – 15 and 50 ml tissue culture; 5, 7, 10 and 15 ml blood collection tubes, and many others.

It has twice the microplate capacity of leading competitors – **all with independently verified biocontainment.**

Streamline clinical diagnostic processing with the new Diagnostik™ rack rotor. Spin pre-loaded clinical analyzer racks for Hitachi, Olympus, Sysmex and Dade Behring analyzers.

### MULTIFUGE® 4 KR PERSONAL KNEEWELL CENTRIFUGE

- Fastest processing and highest throughput of any 4 liter centrifuge
- Large 4 liter or 4 x 500 ml quad blood bag capacity
- Accommodates 32 standard microplates or 8 deepwell plates
- Enhanced user safety: choose from 5 biocontainment approved rotors, accommodating samples from 1.5 - 1000 ml
- New Diagnostik™ rotor spins tubes pre-loaded in clinical analyzer racks
- HIGHplate® rotor spins filter plates to 85 mm in height
- Optimum run stability with SMARTspin™ Imbalance Detection System
- Easy-to-clean soft-touch keypad
- Reduced maintenance with brushless induction drive



Round and DoubleSpin™ buckets

# DOWN



Range of sample vessels



15 ml tissue culture tube adapter

### Versatility for every application

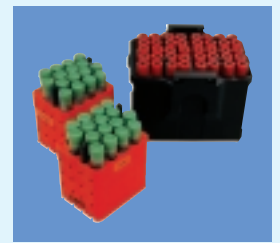
The Multifuge® 4 KR provides personal processing power for every laboratory environment.

With its wide range of rotors, including swinging bucket, windshielded swinging bucket, clinical analyzer rack and high-capacity fixed-angle varieties, this portable general purpose centrifuge is equally at home in clinical, biotechnology, microbiology, pharmaceutical and small blood processing labs.

### Process more samples, more quickly, with DoubleSpin™ buckets

Designed to spin larger numbers of tubes at higher RCFs than leading competitors, the Multifuge® 4 KR delivers the sample processing throughput that today's scientist demands.

Its powerful induction drive and its swinging bucket rotor – which accommodates DoubleSpin™ buckets – combine to provide higher 'g's and capacities for the most popular sample formats. The result: shorter processing times for more samples.



With the Multifuge® 4 KR, you will realize processing efficiencies - for tissue culture tubes, blood collection tubes, microplates and more - that are significantly better than those of conventional general purpose centrifuges.

### High capacity for 5/7 ml blood collection tubes

	Tubes per run	Tube processed per hour	
Competitive general purpose centrifuge A	76	456	
Competitive general purpose centrifuge B	120	720	
Multifuge® 4 KR using Diagnostik rotor and Olympus racks	120 <sup>1)</sup>	720	
Multifuge® 4 KR using DoubleSpin buckets	160	960	

For a centrifugation run, including braking time, of approx. 10 min.

<sup>1)</sup> Handle only 12 racks as opposed to unloading each individual tube

### High capacity for 15 ml conical tissue culture tubes

	Max. RCF	Tubes per run	Tube processed per hour	
Competitive general purpose centrifuge A	4,300	36	144	
Competitive general purpose centrifuge B	3,750	56	224	
Multifuge® 4 KR using DoubleSpin™ buckets	4,650	96	384	

For a centrifugation run, including braking time, of approx. 15 min.



# PURE PROCESSING POWER T

## Safe operation for you and your sample

The Multifuge® 4 KR meets stringent international safety standards. It offers the widest selection of independently verified biocontainment rotors that comply with rigorous international guidelines for aerosol containment of bacteria and viruses.

The SMARTspin™ Imbalance Detection System provides optimum run stability for all rotors at all speeds, and allows sample tubes to be balanced by eye alone. The SMARTspin™ System will automatically brake the centrifuge if an excessive imbalance is detected, for example, due to tube leakage. Reliable imbalance detection means that even large swinging-bucket rotors can operate safely with a 30 gram imbalance.

Automatic Rotor Recognition offers convenient operation as well as reliable protection against incorrect parameter settings, and ensures reproducible run conditions.

## Effortless access

The Soft-Touch Lid Lock ensures safe operation with an easy-open/close mechanism. The lid can be opened and closed effortlessly with just one hand.

## Separations made simple

The Multifuge® 4 KR offers convenient operation at your fingertips. The EASYcontrol™ II Soft-Touch Keypad incorporates large LED display panels that can be cleaned easily and read at a distance.

## Easy instrument set-up and operation includes:

- 9 program memory for standard runs
- 9 acceleration and deceleration profiles
- rpm to RCF conversion
- 'Pretemp' function for fast pre-cooling
- Quick Run Mode



# HAT'S CLOSE AT HAND



## Utilize your existing Centri-Lab® adapter inventory

Customers with Multifuge® 3 centrifuges can use their Centri-Lab® Type C and Type D adapters in the Multifuge® 4 KR.

If you own an older Heraeus® Megafuge® 3 or Varifuge® 3, there's no problem, either! Transitioning is easy. Use existing Type C adapters for 750 ml round buckets which are fully compatible with Multifuge® 4 KR round buckets. Customers with rectangular Type A adapters can use them in the Multifuge 4® KR with the help of transition adapters that hold two Type A units per bucket.

## Convenient, ergonomic, personal

Measuring just 700 mm high x 680 mm wide x 720 mm deep, the Multifuge® 4 KR requires a minimum of laboratory space, and can be conveniently stored under the bench when not in use.

Unlike large floor model centrifuges with similar capacities, the instrument can be kept close at hand: because it is small, there is no need to permanently locate it in the equipment room.

Ergonomically designed for easy loading/unloading while sitting or standing, the instrument incorporates recessed hand grips to assist with transportation.

# VERSATILE ROTORS FOR EVERY

With its wide range of rotors, the Multifuge® 4 KR can handle just about any processing requirement - now and for years to come.

## LH-4000 swinging bucket rotor

Process 4 liters of sample (or 4 blood bags) in the LH-4000 rotor's round buckets. DoubleSpin™ buckets accept two Centri-Lab® Type D adapters each, in any combination, to spin as many as 448 tubes per run.

### DoubleSpin™ buckets - outstanding sample capacity

Sample	Capacity per Run
5/7 ml blood tubes	160
10/15 ml blood tubes	128
15 ml tissue culture tubes	96
50 ml tissue culture tubes	32
Standard microplates	32
Deepwell plates	8

The LH-4000 rotor offers outstanding capacity and flexibility for tissue culture, virological tests, DNA/protein precipitation, blood processing, and more!



LH-4000 rotor with round buckets

## LH-4000W windshielded swinging bucket rotor

Designed for the stringent demands of high speed, low-temperature protocols, the LH-4000W rotor maintains temperature-sensitive samples as required.



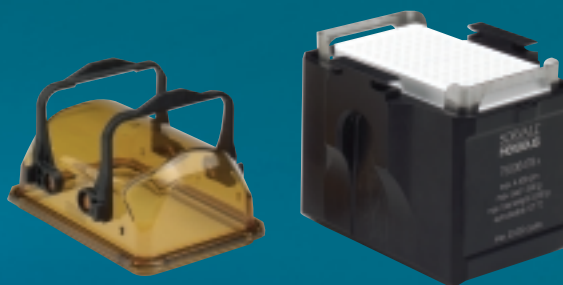
## LH-4000W rotor

Like the LH-4000 rotor, the LH-4000W is low-maintenance. Its trunnions do not require greasing.

## HIGHplate® rotor for advanced filter plate processing

Use the HIGHplate® rotor to spin RNA/DNA filter plates at 5,890 x g with the added benefit of independently certified biocontainment.

- Accommodates all brands of filter plates and microplates
- Accepts filter plates to 85 mm in height
- Spins 10 standard microplates
- Safe with one twist of the transparent lid



DoubleSpin™ bucket containing 8 standard microplates



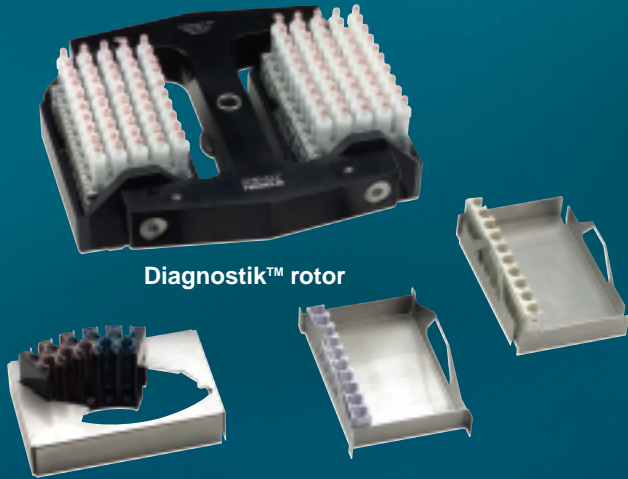
LH-4000 rotor with DoubleSpin™ buckets



HIGHplate® rotor



# RY PROCESSING NEED



Diagnostik™ rotor



BIOshield® rotor

## NEW Diagnostik™ rack rotor

The Diagnostik™ rack rotor spins many popular clinical analyzer racks.

- Minimize sample handling steps: spin blood collection tubes already loaded in analyzer racks
- Accommodates Olympus, Hitachi, Dade Behring and Sysmex racks

## Highconic® fixed-angle rotor

Process tissue culture tubes, fast, at up to 10,020 x *g*.

- Optimum sedimentation with unique tube angle
- Biocontainment approved
- Autoclavable



Highconic® rotor

## BIOshield® windshielded swinging bucket rotor

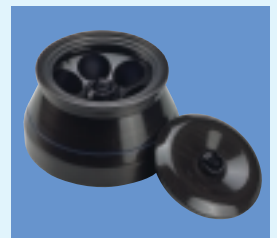
The BIOshield® rotor offers the highest speeds in the industry, processing more tubes per hour than any competitive rotor.

- 4 x 250 ml rectangular buckets
- Biocontainment certified
- Fully autoclavable
- Safe with one twist of the transparent lid

## LAC-250 fixed-angle composite rotor

The lightweight, system-integrated LAC-250 composite rotor quickly processes 1.5 liters of sample.

- 6 x 250 ml capacity
- 15,320 x *g*
- Corrosion-resistant composite material
- Ideal for bacteria and other general pelleting needs



LAC-250 rotor

# ROTORS AND ACCESSORIES

## Specifications, buckets and microplate adapter for LH-4000 swinging bucket rotor



Rotor body order no. 75006475

Bucket/Insert Type		Round Bucket	DoubleSpin™ Bucket	Microplate Adapter for DoubleSpin Bucket
Order no.		75006477	75006478	75006486
Biocontainment lids <sup>1)</sup> (pair)	Order no.	75006421	75006479	n/a
Max. bucket/insert capacity	ml	1 x 1,000	2 x 250	1 x 8 standard microplates
Max. rotor capacity	ml	4 x 1,000	4 x 500	4 x 8 standard microplates
Max. plate height	mm	n/a	n/a	110
Max. speed	rpm	4,400	4,400	4,400
Max. RCF	x g	5,350	4,650	4,650
Min. temp at max. speed	°C	10	10	10
Max. radius	mm	247	215	215
Adapters (Centri-Lab®)	type	C	D	n/a

## Specifications, buckets and microplate adapter for LH-4000W windshielded swinging bucket rotor



Rotor body order no. 75006476

Bucket Type		Round Bucket	DoubleSpin™ Bucket	Microplate Adapter for DoubleSpin Bucket
Order no.		75006477	75006478	75006486
Biocontainment lids <sup>1)</sup> (pair)	Order no.	75006421	75006479	n/a
Max. bucket/insert capacity	ml	1 x 1,000	2 x 250	1 x 8 standard microplates
Max. rotor capacity	ml	4 x 1,000	4 x 500	4 x 8 standard microplates
Max. plate height	mm	n/a	n/a	110
Max. speed	rpm	4,400	4,400	4,400
Max. RCF	x g	5,350	4,650	4,650
Min. temp at max. speed	°C	1	1	1
Max. radius	mm	247	215	215
Adapters (Centri-Lab®)	type	C	D	n/a

## Specifications for BIOshield® and HIGHplate® windshielded rotors



Rotor		BIOshield®	HIGHplate®
Order no.		75006435	75006444
Biocontainment rotor cover		included	included
Max. rotor capacity	ml	4 x 250	2 x 5 standard microplates
Max. plate height	mm	n/a	85
Max. speed	rpm	5,850	5,650
Max. RCF	x g	6,960	5,890
Min. temp at max. speed	°C	1	0
Max. radius	mm	182	165
Adapters (Centri-Lab®)	type	D	n/a
Special features		Biocontainment approved <sup>1)</sup> , autoclavable	Biocontainment approved <sup>1)</sup>

<sup>1)</sup> Independently verified for biocontainment.



## Adapters for LH-4000 / LH-4000W swinging bucket rotors with round buckets (Centri-Lab® Type C)



Volume (ml)	1.5/2	7	5/7	15	10/15	15	14/15	25	45/50	50	50	100	150/180	175/200 /225	250	250	500 <sup>1</sup>	500	500	500	1000	
<b>Tubes per adapter</b>	48	35	19	19	17	12	12	7	7	4	5	2	1	1	1	1	1	1	1	1	1	
<b>Tubes per rotor</b>	192	140	76	76	68	48	48	28	28	16	20	8	4	4	4	4	4	4	4	4	4	
<b>Tube type<sup>2)</sup></b>	ML	DIN	BL	DIN	BL	CON	FL	DIN	PYR	DIN	CON	DIN	DIN/Misc.	CON/Misc.	Misc.	CON	Misc.	CON	DIN	Baxter	Bottle	
<b>Max. length of tube (mm)<sup>3)</sup></b>	50	177	177	177	177	177	177	177	177	177	177	177	132	177	190	190	190	190	–	–	190	
<b>Max. tube dia. (mm)</b>	11	12.8	13.5	17	17	16.5	18.3	25	29.5	34.5	29.5	45	56.5	62	59	61.5	70	96	–	–	100	
<b>Max. cap dia. (mm)</b>	13	14	18.5	18.5	20	23.5	21.5	31	31	39	35.5	47.5	–	75	–	–	–	–	–	–	n/a	
<b>Adapter color<sup>4)</sup></b>	BL	Y	LGY	R	W	OB	BR	OR	UB	G	LG	B	BL	W	W	W	W	W	W	Custom	Custom	n/a
<b>Adapter order no.</b>																						
<b>(7500xxxx)</b>	8132	8133	8134	8135	8136	8137	6494	8138	6493	8140	6495	8142	6498	8144 <sup>1</sup>	6649	8147	8145	6438	7722	7723	n/a	
<b>Adapter shape<sup>5)</sup></b>	F/C	F/R	F/R	F/R	F/R	F/C	F/R	F/R	F/R	F/R	F/C	F/R	F/R	F	F/R	F/C	F/R	F/C	F/R	F/R	F/R	F

<sup>1)</sup> If conical tubes are used, an additional conical adapter pad should be purchased from the tube manufacturer.

<sup>2)</sup> ML = microliter tube; DIN = borosilicate glass with DIN dimensions; BL = blood collection tube; FL = flanged tube; CON = conical tissue culture tube; PYR = round bottom Pyrex glass.

<sup>3)</sup> Max. tube length when biocontainment lid is used.

<sup>4)</sup> BL = black; Y = yellow; LGY = light gray; BR = brown; OB = olive brown; W = white; R = red; OR = orange; UB = ultramarine blue; LG = light green; G = green; B = blue; GR = gray.

<sup>5)</sup> F = flat; C = conical; R = round.

## Adapters for LH-4000 / LH-4000W swinging bucket rotors with DoubleSpin™ buckets, and BIOshield® rotor (Centri-Lab® Type D)



Volume (ml)	1.5/2	7	5/7	10/15	15	15	14/15	25	25/50	45/50	50	50	100	150/180	175/250	Type A	Type D
<b>Tubes per adapter</b>	56	28	20	16	24	9	9	6	4	4	3	4	1	1	1	–	–
<b>Tubes per LH-4000/ LH-4000W rotor</b>	448	224	160	128	96	72	72	48	32	32	24	32	8	8	8	8	4
<b>Max. length of tube <sup>1)</sup> in LH-4000 and LH-4000W rotors (mm)<sup>5)</sup></b>	50	120-151	118-150	120-149	121-147	122-150	122-149	127-149	132-149	125-149	127-149	129-140	138	147	140-145	–	–
<b>Tubes per BIOshield® rotor</b>	224	112	80	64	n/a	36	36	24	16	16	12	16	4	4	4	n/a	n/a
<b>Max. length of tube in BIOshield® rotor (mm)<sup>2)</sup></b>	50	117	117	117	117	120	117	117	117	117	117	120	120	125	125	–	–
<b>Tube type<sup>3)</sup></b>	ML	DIN	BL	DIN/BL	CON	CON	FL	DIN	UNI	PYR	DIN	CON	DIN	DIN/Btl	CON/Misc.	Adapter	Adapter
<b>Max. tube dia. (mm)</b>	11	12.8	14	17	16.5	16.5	18.3	25	25.5	29.5	34.5	29.5	45	56.6	62	–	–
<b>Max. cap dia. (mm)</b>	13	14	17.5	19	23	24	25	28	32	35	38	35.5	66	66	63	–	–
<b>Adapter color<sup>4)</sup></b>	BL	Y	LGY	R	W	OB	BR	OR	BG	UB	G	LG	B	GB	BL	BL	Stainless
<b>Adapter order no.</b>																	
<b>(7500xxxx)</b>	6452	6453	6454	6455	6468	6456	6492	6457	6459	6491	6460	6461	6462	6463	6465 <sup>5)</sup>	76006467	6499
<b>Adapter shape<sup>6)</sup></b>	F/C	F/R	F/R	F/R	F/C	F/C	F/R	F/R	F/R	F/R	F/R	F/C	F/R	F/R	F	n/a	n/a

<sup>1)</sup> Max. length depends on the position in the adapter. In the corners of the buckets, only the short tubes can be used.

<sup>2)</sup> Max. tube length when biocontainment lid is used.

<sup>3)</sup> ML = microliter tube; DIN = borosilicate glass with DIN dimensions; BL = blood collection tube; FL = flanged tube; CON = conical tissue culture tube; PYR = round bottom Pyrex glass; UNI = universal container; Btl = bottle.

<sup>4)</sup> BL = black; Y = yellow; LGY = light gray; BR = brown; OB = olive brown; W = white; R = red; OR = orange; UB = ultramarine blue; LG = light green; G = green; B = blue; GR = gray; BG = blue-green; GB = gray-blue; stainless = made from stainless steel.

<sup>5)</sup> If conical tubes are used, an additional conical adapter pad should be purchased from the tube manufacturer.

<sup>6)</sup> F = flat; C = conical; R = round.

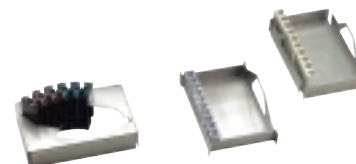
Note: Adapter type D, order no. 76006467 is required to use Centri-Lab® Adapter type A (from Megafuge® line) in rectangular bucket (#75006478) or BIOshield® rotor (#75006435).

## Specifications for Diagnostik™ rotor



Rotor		Diagnostik
Order no.		75006480
Max. speed	rpm	3,500
Max. RCF	x g	2,550
Min. temp at max. speed	°C	<0
Max. radius	mm	186

## Trays for Diagnostik™ rotor racks



	No. of tubes per rack	Racks per rotor	Dimensions (L x W)	Order no.
Hitachi	5	2 x 10	118 mm x 20 mm	75006416
Olympus	10	2 x 6	117 mm x 20 mm	75006417
Sysmex	10	2 x 6	200 mm x 25 mm	75006418
Dade-Behring	10	2 x 2	–	75006419

## Accessories for blood bag centrifugation in LH-4000 / LH-4000W rotors with round buckets



Adapter description	Order no.
Adapter for 400 - 500 ml quad blood bags "L/M"	75006496
Adapter for small volume special blood applications	75006485
Taring plates: rubber, each 2 x 35 and 65 g	75005759
Taring weights for adapter 75006485: 1 set, comprising 4 weights (6 g and 15 g)	75007645

## Cyto-accessories for LH-4000 / LH-4000W swinging bucket rotors with DoubleSpin™ buckets, and BIOshield® rotor with rectangular buckets

Type		Order no.
100 micro tubes	0.75 ml with 0.5 ml opening in bottom	75001153
100 micro tubes	1.5 ml with 0.5 ml opening in bottom	75001152
Lid	For working without micro tubes	76003422
Cyto-container	With 2 cylindrical bores for approx. 1.5 ml sample volumes	75003415
Cyto-container	With 2 conical bores for approx. 3.0 ml sample volumes	75003416
100 filter cards	For cyto-container 75003415	76003424
100 filter cards	For cyto-container 75003416	76003425
Clip carrier	For holding a cyto-container and slide	75003414
Support insert	For using cyto-accessories with bucket 75006478 or BIOshield rotor	76006466



Note: LH-4000 / LH-4000W rotor accepts 2 cyto-systems per bucket.

## Fixed-angle rotor specifications



Fixed-angle rotor		LAC-250	Highconic®
Order no.		75006483	75003046
Angle	°	23	45
Max. speed	rpm	10,000	8,500
Max. RCF	x g	15,320	10,020
Max. capacity	ml	6 x 250	6 x 50
Min. temp at max. speed	°C	1	< 0
Max./min. radius	mm	137/95	124/60
Special features		Lightweight, composite material	Biocontainment approved, autoclavable

## Adapters for LAC-250 fixed-angle rotor

Tube/bottle	Tube dimensions (D x L)	Tubes per rotor	Color	Order no.
250 ml Dry-Spin and Oak Ridge bottles (no adapters needed)	61 x 153	6	–	–
250 ml PA Oak Ridge bottle <sup>2)</sup>	60 x 120	6	–	12002
1 x 150 ml/125 ml Corex bottle	53 x 132	6	yellow	00372
1 x 150 ml thick-walled tube	45 x 132	6	white	00458
1 x 100 ml Pyrex bottle	44 x 137	6	yellow	00371
1 x 50/35 ml conical tube	30 x 115	6	white	03072
3 x 30 ml Corex bottle	24 x 105	18	white	00449
5 x 14 ml Pyrex tube	18 x 120	30	gray	00456
7 x 12 ml tube	16 x 100	42	purple	00389
12 x 5/4 ml tube	12 x 75	72	red	00388
5 x 3 ml Pyrex tube	10 x 75	30	green	00370 + 00456 <sup>1)</sup>

<sup>1)</sup> Adapters must be used together. <sup>2)</sup> PA = Polyallomer

## Adapters for Highconic® fixed-angle rotor

Tube volume	Tubes per rotor	D (mm)	L (mm)	Order no.
4 x 1.5 ml	24	11	58	76002905
4 x 3.5 ml	24	11	103	75003091
2 x 6.5 ml	12	13	115	75003092
2 x 12 ml	12	16	96	75003093
1 x 16 ml	6	18	124	76002906
1 x 38 ml	6	25	112	75003094
1 x 50 ml	6	29	118	75003014
1 x 15 ml conical tissue culture	6	16.5	120	75003095
1 x 50 ml conical tissue culture	6	30	117	75003096 <sup>1)</sup>
Replacement sealing rings, incl. lubricant	n/a	n/a	n/a	75003423

<sup>1)</sup> Included with rotor.



# TECHNICAL DATA / ORDERING INFORMATION

## TECHNICAL DATA MULTIFUGE® 4 KR

Speed range	rpm	300 – 10,000, adjustable in 10 rpm increments
Max. RCF	x g	15,320
Max. capacity		4 x 1,000 ml or 4 x 8 standard microplates
Drive		brushless induction drive
Accel/decel. profiles		9/9
Program memory		9 + 1 pretemp program
Run time		0 – 99 min, plus hold
Temperature range	°C	-9 to +40, CFC-free refrigerant
Temperature accuracy		± 2 °C
Control		microprocessor controlled via EASYcontrol™ II
Functions		RCF-preselection, Quick-run, automatic rotor recognition, imbalance detection and Soft-Touch lid-lock
Imbalance		electronic, speed and rotor dependent
Dimensions (H x W x D)	mm	700 x 680 x 720
Weight	kg	236
Plug type		Nema 5-15R
Test standards		Designed and tested in accordance with EN 61 010-1, EN 61 010-2-020, EN 50 081-1, EN 50 082-1

## ORDERING INFORMATION

Model	Description	Order no.
Multifuge® 4 KR	Refrigerated, 230 V, 50 Hz, 12.9 A	75004461

## Your Sales Contact

## For Ordering or Technical Information

<b>Australia</b>	Kendro Laboratory Products Pty Ltd · Lane Cove, Sydney · NSW 2066 · Tel. +61 (0) 2-9936 1540 · Fax +61 (0) 2-9427 9765 · info@kendro.com.au
<b>Austria</b>	Kendro Laboratory Products GmbH · Vienna · Tel. +43 (0) 1-801 40 0 · Fax +43 (0) 1-801 40 40 · office@kendro.at
<b>Canada</b>	Kendro Laboratory Products International Sales · Newtown, CT · USA · Tel. +1 203-270 2080 · Fax +1 203-270 2166 · info@kendro.com
<b>China</b>	Kendro Laboratory Products Beijing Rep. Office · Beijing · Tel. +86 (0) 10-6501 3810 · Fax +86 (0) 10-6501 4229 · kendrobj@163bj.com Kendro Laboratory Products (H.K.) Limited · Hong Kong · Tel. +852 2711 3910 · Fax +852 2711 3858 · info@kendro.com
<b>Denmark</b>	Kendro Laboratory Products Shanghai Rep. Office · Shanghai · Tel. +86 (0) 21-5490 0216 · Fax +86 (0) 21-5490 0230 · kendrosh@public4.sta.net.cn
<b>Denmark</b>	Axeb AB · Albertslund · Tel. +45 (0) 43-6246 47 · Fax +45 (0) 43-6246 41 · info@axeb.dk
<b>France</b>	Kendro Laboratory Products SAS · Courtaboeuf cedex · Tel. +33 (0) 1-69 18 77 77 · Fax +33 (0) 1-60 92 00 34 · info@kendro.fr
<b>Germany</b>	Kendro Laboratory Products GmbH · Hanau · Tel. +49 (0) 1805-536 376 · Fax +49 (0) 1805-112 114 · info@kendro.de
<b>India</b>	Kendro Laboratory Products (India) Pvt. Ltd. · New Delhi · Tel. +91 (0) 11-618 48 40 · Fax +91 (0) 11-618 53 97 · kendro.india@vsnl.com
<b>Italy</b>	AHSI S.p.A. · Cornate D'Adda · Tel. +39 039-68 271 · Fax +39 039-68 27 500 · info@ahsi.it
<b>Japan</b>	Nippon Kendro Co. Ltd. · Tokyo · Tel. +81 (0) 3-3517 1661 · Fax +81 (0) 3-3517 1664 · info@kendro.co.jp
<b>New Zealand</b>	Kendro Laboratory Products Pty Ltd · Auckland · Tel. +64 (0) 9-525 03 33 · Fax +64 (0) 9-525 03 37 · info@kendro.co.nz
<b>Poland</b>	Kendro Spółka z.o.o. · Warsaw · Tel. +48 (0) 22-663 43 23 · Fax +48 (0) 22-663 43 25 · kendro.warszawa@kendro.com.pl
<b>Portugal</b>	Heraeus S.A. · Massamá · Tel. +351 (0) 214-387 630 · Fax +351 (0) 214-387 636 · heraeus@mail.telepac.pt
<b>Spain</b>	Heraeus S.A. · Madrid · Tel. +34 (0) 91-358 19 96 · Fax +34 (0) 91-358 20 67 · laboratorio@heraeus.es
<b>Sweden</b>	Axeb AB · Sollentuna · Tel. +46 (0) 8-585 777 50 · Fax +46 (0) 8-623 15 45 · info@axeb.se
<b>Switzerland</b>	Kendro Laboratory Products AG · Zurich · Tel. +41 (0) 1-454 12 12 · Fax +41 (0) 1-454 12 99 · kendro-ag@swissonline.ch Kendro Laboratory Products SA · Carouge (Geneva) · Tel. +41 (0) 22-343 21 67 · Fax +41 (0) 22-342 38 31 · kendro-sa@swissonline.ch
<b>U.K./Ireland</b>	Kendro Laboratory Products PLC · Bishop's Stortford · Herts · Tel. +44 (0) 1279-827 700 · Fax +44 (0) 1279-827 750 · kendro@kendro.co.uk
<b>USA</b>	Kendro Laboratory Products · Newtown, CT · Tel. +1 800-522 7746 · Fax +1 203-270 2166 · info@kendro.com
<b>All other countries in</b>	
<b>Asia Pacific</b>	Kendro Laboratory Products (H.K.) Limited · Hong Kong · Tel. +852 2711 3910 · Fax +852 2711 3858 · info@kendro.com
<b>Europe, Middle East, Africa</b>	Kendro Laboratory Products International Sales · Hanau · Germany · Tel. +49 (0) 1805-536 376 · Fax +49 (0) 1805-112 114 · info@kendro.de
<b>Latin America</b>	Kendro Laboratory Products International Sales · Newtown, CT · USA · Tel. +1 203-270 2080 · Fax +1 203-270 2210 · info@kendro.com
<b>Internet</b>	<a href="http://www.kendro.com">http://www.kendro.com</a>