

HUGER
VIDEO ENDOSCOPY



2600 **VIDEO ENDOSCOPY**

2600 SERIES

VIDEO ENDOSCOPY

The Huger 2600 series video endoscope bring the high- definition images to healthcare professionals around the globe, help facilitate more accurate diagnosis and treatment.

Vascular Enhancement Function

The abundant and precise blood vessel image to the digestive tract and the diagnosis of respiratory tract is very useful, while the HUGER 2800 video processor have blood adjustment function which can easily distinguish the sharp, deep levels of reproduction of mucous membrane, capillary and tiny bleeding points;

Automatic Iris Mode

To reduce the halation and present more clear image, the Huger 2800 processor provide two iris modes on the front panel.

Peak: The brightness is adjusted based on the brightest part of the endoscopic image

Average: The brightness is adjusted based on the average brightness of the endoscopic image

Edge Enhancement Function

Outline enhancement function can meet the doctor's preference of the image to different levels;

The VEP-2800 outline enhancement (ENH)

Including: H,M,L



Product compatibility

VEP-2800 video processor is compatible with video gastroscope, video colonoscope, video bronchoscope, video ENT Scope;



VIDEO PROCESSOR

VEP-2800



Video Output	Provide HD-DVI etc multi signal video output
Color Adjustment	Auto AWB, adjustable Red / Blue
Gain Adjustment	Can adjust brightness
Brightness Metering	Can choose both average metering mode and peak metering model
Enhancement	Can highlight the vascular outline makes the diagnosis easier
Freeze Picture	Freeze and save picture to SD card, Picture in Picture
Voltage	110v-240v / 50-60HZ
Safety Standard	IEC60601-1 / IEC60601-1-2

LIGHT SOURCE

SLS-2850

LLS-2810

XLS-180P/2800



	SLS-2850	LLS-2810	XLS-180P	XLS-2800
BULB POWER	50W Xenon Lamp	LED Lamp	180W Xenon Lamp	300W Xenon Lamp
Color Temperature	5900K	4700K	6000K	5900K
Life Range	2500 Hours	35000 Hours	500 Hours	500 Hours
Pressure Output	≥0.03Mpa, High & Low Adjustment			
Pump	Long Life & Quite Pump			
Voltage	110v-240v / 50-60HZ			
Safety Standard	IEC60601-1 / IEC60601-1-2			

2600 SERIES

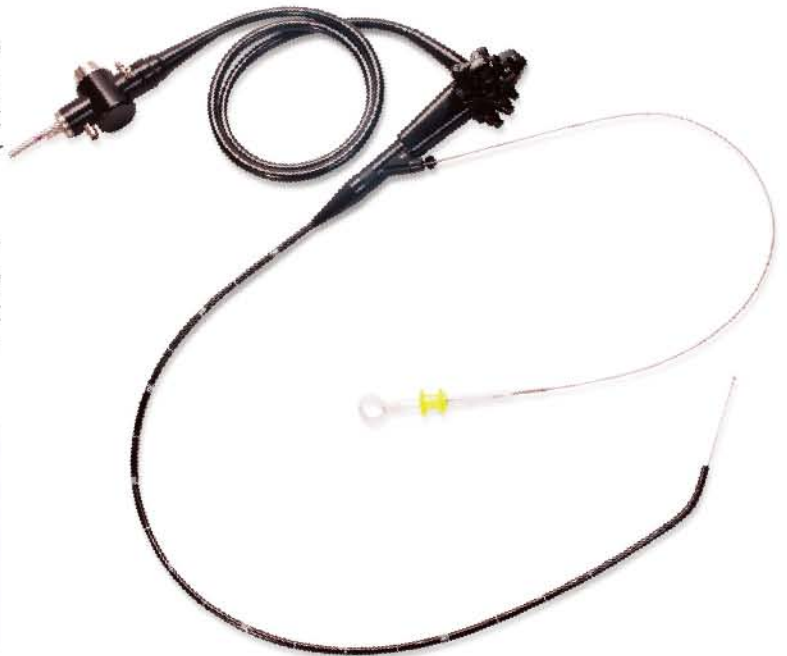
VIDEO ENDOSCOPY

VIDEO GASTROSCOPE VIDEO COLONOSCOPE

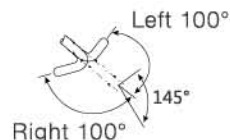
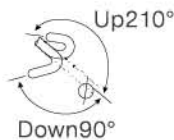
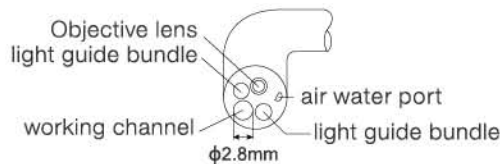
Superior Image Quality

The ALL NEW HUGER video endoscope use the SONY Medical grade high resolution CCD which provides to the doctor excellent image quality, presenting the super clear image picture of the cell organization;

The new optical lens design enables the endoscope to have 145 degrees of the large range of field of view and has a full picture effect makes the doctor to observe the maximum range of images;



VIDEO GASTROSCOPE



Model	GVE-2600	GVE-2600X	GVE-2600P
Insertion tube diameter	φ9.6mm	φ9.2mm	φ9.0mm
Distal Diameter	φ9.8mm	φ9.2mm	φ9.0mm
Working length		1050mm	
Working Channel	φ2.8mm	φ2.8mm	φ2.2mm
Field of view		145°	
Depth of view		3-100mm	
Tip Deflection	UP210°, DOWN90°, LEFT100°, RIGHT100°		

2600

Video Gastroscope
Video Colonoscope

Super Operational Performance

The all new control body with small size, light weight, smoothly control can greatly reduce the fatigue caused by long time operation.

Nice chain drive structure will makes sure that the operation is comfortable and soft.

Slim insertion tube reduces the pain during the endoscopy procedures.

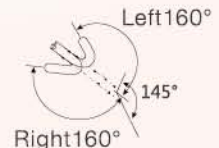
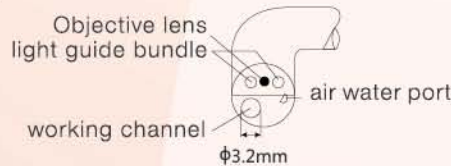
Advanced Cleaning and Disinfection Function

Waterproof design,soakable disinfectant can reduce cross infection effectively.

Disassemble suction,air Water buttons for disinfection procedures.

Smoothness internal channel and all supporting tools makes the endoscope easier for endoscope cleaning.

VIDEO COLONOSCOPE



Model	CVE-2600T/L/I/S	CVE-2600TM/LM/IM/SM	CVE-2600TP/LP/IP/SP
Insertion tube diameter	φ12.5mm	φ12.5mm	φ11.8mm
Distal Diameter	φ12.8mm	φ12.8mm	φ11.8mm
Working length	1700mm / 1550mm / 1330mm / 790mm		
Working Channel	φ3.2mm	φ3.7mm	φ3.2mm
Field of view	145°		
Depth of view	3-100mm		
Tip Deflection	UP180°, DOWN180°, LEFT160°, RIGHT160°		

2600 SERIES

VIDEO ENDOSCOPY

VIDEO BRONCHOSCOPE VIDEO ENT ENDOSCOPE

Superior Image Quality

Adopted the new SONY ultra micro,dedicated high pixel medical endoscope use CCD chip which provide bright,clear,high resolution image;

Wide Field of View

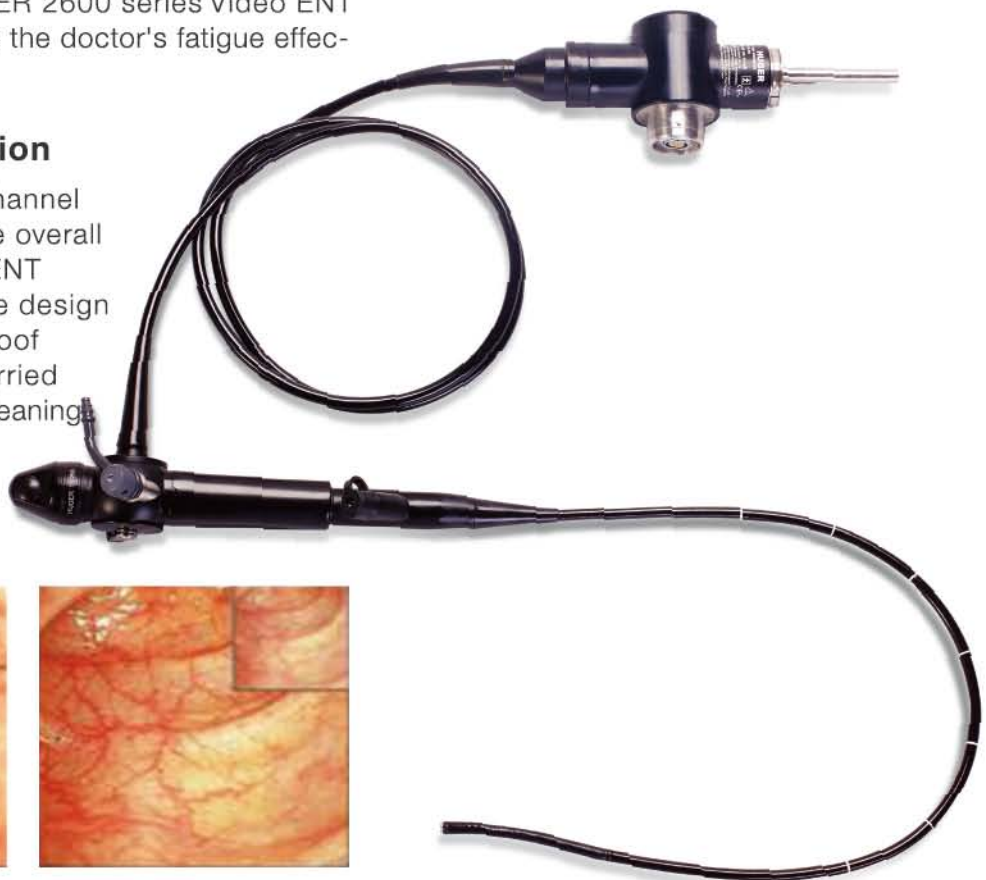
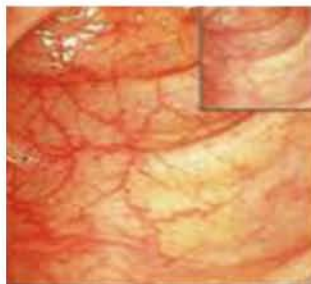
Up to 120° degree field of view and big angulation makes the bronchoscopy procedures easily to observing,positioning,increase the doctors efficiency and reduces the patients pain;

Superior Ergonomic Design

With the 5.8mm insertion tube and small but simple control body the HUGER 2600 series Video ENT Endoscope can reduce the doctor's fatigue effectively.

The Overall Function

The 2.0mm working channel contributes a lot to the overall function of the video ENT Endoscope. The unique design adopted a full-waterproof mechanism can be carried out a comprehensive cleaning and disinfection. With disassemble suction valve make the scope more safe;





2600
Video Bronchoscope
Video ENT Endoscope

VIDEO BRONCHOSCOPE

Model	VB-2600
Insertion tube diameter	φ5.3mm
Working length	600mm
Working Channel	φ2.0mm
Field of View	120°
Depth of View	3-100mm
Tip Deflection	UP180° / DOWN130°

VIDEO ENT ENDOSCOPE

Model	VN-2600
Insertion tube diameter	φ5.3mm
Working length	450mm
Working Channel	φ2.0mm
Field of view	120°
Depth of view	3-100mm
Tip Deflection	UP180° / DOWN130°

We will not provide another information
if there is change in the technical specification

HUGER
VIDEO ENDOSCOPY

HUGER MEDICAL INSTRUMENT CO.,LTD.

No.1328.YaoBei Road,JiuTing,Songjiang District.201615 Shanghai

Tel: +86-21-67626235 67626236

Fax: +86-21-67691721

Web: www.huger.cn

E-mail: inform@huger.cn



Learn more, Please
scan the qr code