

MyLab<sup>™</sup>Eight

MyLab<sup>™</sup>Eight@XP

E



Eight

@MPowered eXPerience in Ultrasound

**e**saote



**My**Work

**My**Patient

**My**System

**My**Lab™

MyLab™Eight platform is the culmination of Esaote's dedicated R&D with the aim of meeting the increasing demands of modern healthcare:

- **Outstanding image quality**
- **Confident diagnosis**  
for difficult to scan patients
- **Complete solution**  
for the most demanding clinical activity
- **Advanced research tools**



Outstanding image quality



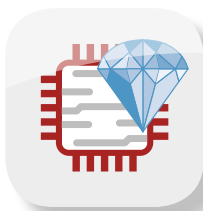
Large probe portfolio



WideView  
21.5"  
IPS Monitor



Advanced clinical tools



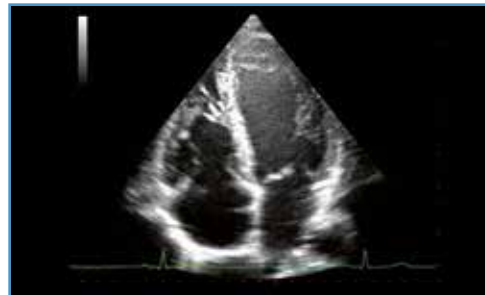
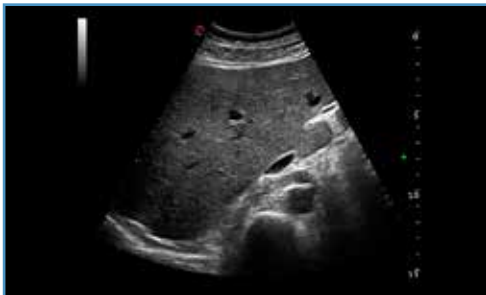
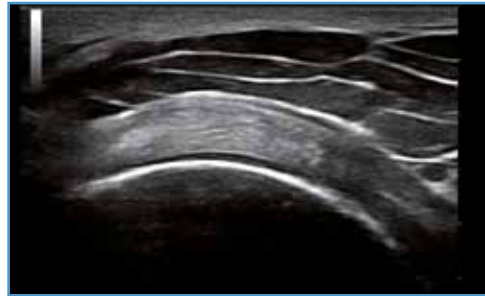
@MPowered Engine



Broad connectivity options



# Outstanding image quality



Esaote puts a great deal of effort into designing systems that offer top image quality to enable confident diagnoses for difficult-to-scan patients, as well as highly detailed superficial image resolution. This has been achieved over the years through advanced research, with several patents and publications, and effective implementation in both systems and probes.

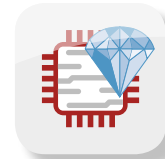
Outstanding diagnostic value is the result of optimization of all the aspects of the signal chain, from the echo generated by the patient through to the display on the system, together with maximization of ultrasound scanning efficiency.

## WideView 21.5" IPS Monitor



The new WideView monitor technology offers sharp diagnostic image clarity with enhanced spatial and contrast resolution.

## @MPowered Engine



MyLab™Eight platform incorporates the new @MPowered Engine to optimize high-density and single-crystal transducers to enable images to be captured at greater depth in the body with unprecedented quality for difficult-to-scan patients.

## Broad Connectivity Options



Wireless and wired connectivity options offer numerous data-saving and transmission options. All our systems are equipped with wired and wireless connectivity for easy networking and patient management.

## Extensive connectivity technology

- Easy networking
- DICOM and IHE compliance
- MyLab™Desk software for comfortable image review and reporting on your laptop or PC

## Large probe portfolio



During real-time scanning the ultrasound probe is a continuously handled interface for the operator, which can lead to hand stress and fatigue.

Our solution:

### Enhanced ergonomics probe solution

- **Lightweight** and with **appleprobe ergonomics**
- **Reduce muscle strength** up to 70%
- **Increased confidence**

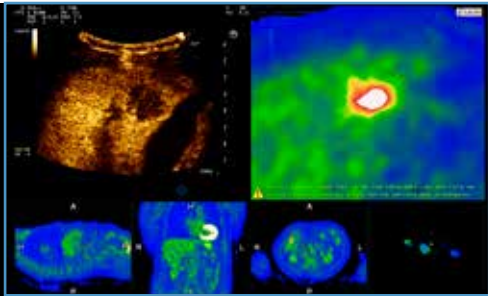
Single-crystal transducers enable images to be captured at greater depth in the body with unprecedented quality for difficult-to-scan patients.

High Density Linear probes offer high frequency top image quality and unparalleled spatial and contrast resolution.



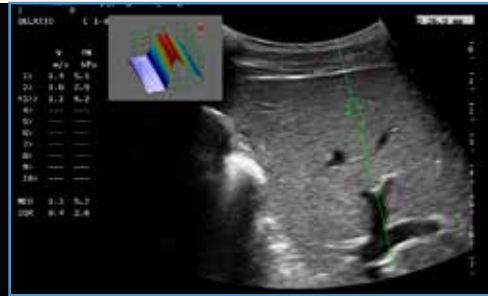
## Virtual Navigator

Advanced tool for Multimodality Real-time Fusion Imaging.



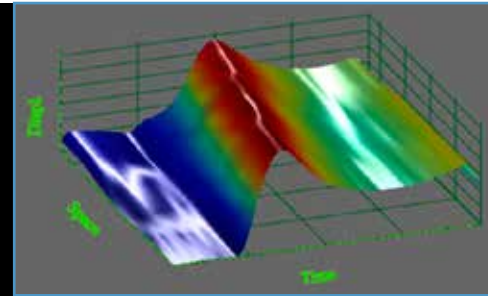
## QElaXto

Shear Wave Tissue Stiffness Quantitative Assessment (MyLab™Eight eXP).



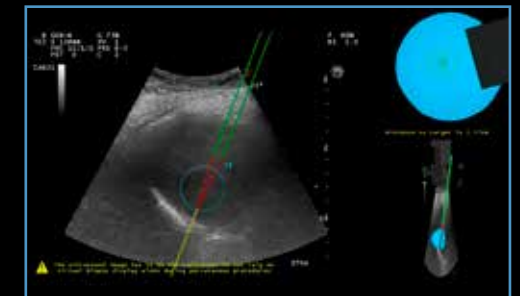
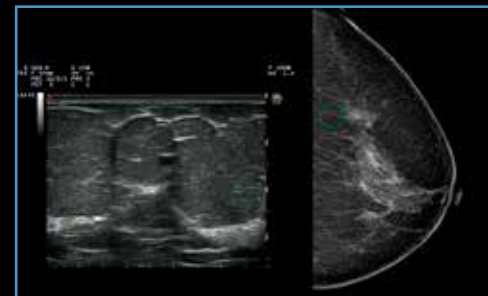
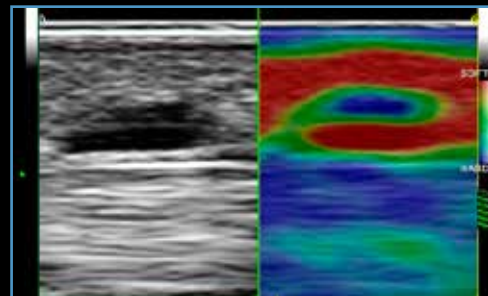
## 3D eWave

Shear Wave Quality Graph for immediate feedback about measurement quality (MyLab™Eight eXP).



## MyLab™Remote

Remote system user interface app that allows MyLab™Eight to be controlled via smartphone or tablet.



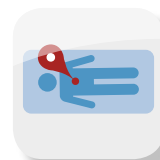
## XFlow

Extraordinary flow sensitivity and spatial resolution: XFlow provides direct visualization of blood echoes, extending wideband resolution, high frame rates and wide dynamic range of blood flow.



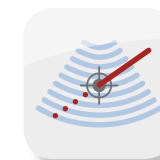
## ElaXto

Full Strain Elastosonography package for multiple applications. Full measurement package, available on many probe typologies.



## BodyMap

2D Navigation technology on second imaging modality, Body mark and patient examined area picture.

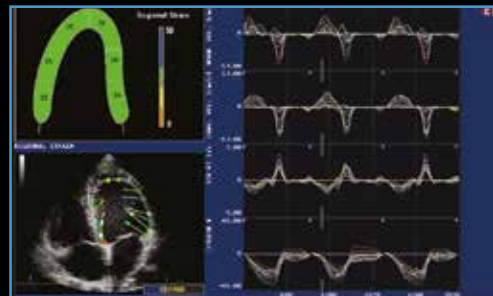
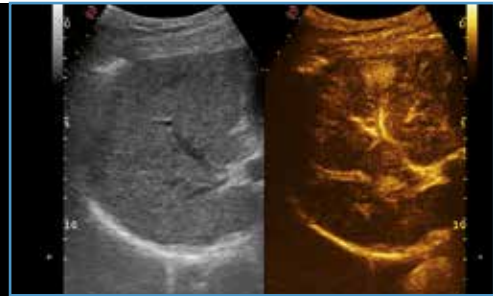


## Virtual Biopsy

Advanced Biopsy also in very difficult approaches: Virtual Biopsy allows physicians to follow percutaneous procedures by superimposing needle tracking information on the real-time ultrasound image.

## CnTI™ Contrast Tuned Imaging

Esaote's proprietary CnTI™ provides high performance contrast enhanced ultrasound imaging with second generation contrast media.

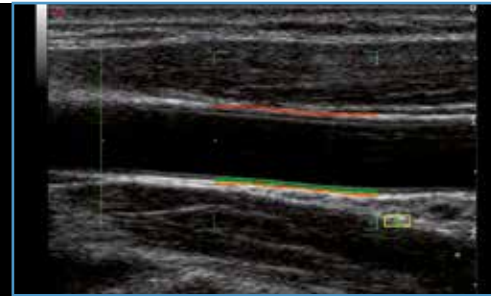


## XStrain

Speckle tracking for myocardial strain and strain rate assessment.

## RFQIMT RFQAS

Intima-Media Thickness and Arterial Stiffness measurements, based on beyond state of the art RF-data technology, are real-time, accurate and provide measurement quality indicators overlaid on the B-mode ultrasound image.

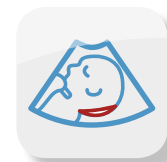
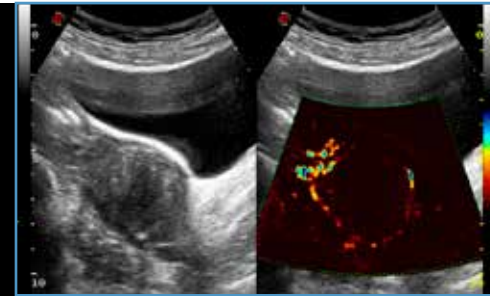


## XLight

A New Era in Volume Imaging: the new XLight technology guarantees to immediately achieve amazingly realistic volumetric images also with very difficult to scan patients, both for gynecology as well as obstetrics examinations.

## microV

High sensitivity, high spatial resolution, high frame rate hemodynamic analysis for microvascularization in tissue perfusion. State of the art sensitivity for superficial and deeper vessels for improved spatial resolution in real-time hemodynamic analysis.



## AutoNT

Performs automatically the Nuchal Translucency measure by simply placing a measure box over the area of interest. AutoNT helps in obtaining faster, more reproducible and less operator dependent results for improved diagnostic confidence and maximized productivity.

Advanced hemodynamic evaluation tools such as XFlow and HD CFM, quantitative tissue stiffness evaluation with QElaXto, and Virtual Navigator for easy-to-perform real-time fusion imaging are just a few examples of Esaote's advanced technologies that are tailored to meet all requirements, including the most demanding.

Esaote's focus on the prevention of work-related musculoskeletal disorders runs through MyLab™Remote, the remote system user interface app that allows MyLab™Eight to be controlled via smartphone or tablet.

Virtual biopsy technology is a valuable tool for facilitating needle insertions for difficult biopsies and for percutaneous treatments.

Other highlights include top-level Contrast Enhanced Ultrasound (CnTI™) and advanced cardiovascular tools, such as the XStrain cardiac deformation analysis tool and the radiofrequency-based Intima Media Thickness (QIMT) and Arterial Stiffness (QAS) measurement, underlining Esaote's trademark "Creativity in Healthcare".

# Radiology



## Advanced diagnostic tools

- CnTI™ Full spectrum Contrast enhanced ultrasound
- ElaXto Full Strain Elastosonography package for multiple applications
- QElaXto Shear Wave Tissue Stiffness Quantitative Assessment (MyLab™Eight eXP)
- microV High sensitivity, spatial resolution hemodynamic analysis for micro-vascularization
- Virtual Biopsy Clear visualization of needle insertion and path
- Virtual Navigator State of the Art Real-time Multiple modality Fusion Imaging Technology

## Large selection of probes

- C 1-8 Single Crystal convex array probes for Difficult-to-scan patients
- L 4-15 High Frequency Linear array probe for optimized spatial and contrast image resolution
- Linear array probes from 3 to 22 MHz
- Biopsy dedicated Convex probe with 0°, 5°, 15° needle insertion angle
- IH 6-18 High Frequency Hockey Stick probe
- TRT33 Transrectal Dual array and Endocavity probes
- Prostate Transperineal Biopsy and Treatment Stepper



# MSK and Rheuma



## Advanced diagnostic tools

- **ElaXto** Full Strain Elastosonography package for multiple applications
- **microV** High sensitivity, spatial resolution hemodynamic analysis for micro-vascularization
- **Virtual Biopsy** Clear visualization of needle insertion and path
- **Virtual Navigator** State of the Art Real-time Multiple modality Fusion Imaging Technology
- **CnTI™** Full spectrum Contrast enhanced ultrasound

## Large selection of probes

- **L 4-15** High Frequency Linear array probe for optimized spatial and contrast image resolution
- **Linear array** probes from 3 to 22 MHz
- **IH 6-18** High Frequency Hockey Stick probe

# Cardiology and Vascular



## Advanced diagnostic tools

- **TVM** Tissue Velocity Mapping
- **CMM** Compass M-Mode on multiple view lines
- **QIMT** Radiofrequency-based IMT for real-time assessment and top precision
- **QAS** Radiofrequency-based real-time Arterial stiffness measurement
- **Stress Echo** for cardiac function assessment during stress (prospective/retrospective/continuous capture)
- **XStrain** speckle tracking for myocardial strain and strain rate assessment
- **LVO** Left Ventricle opacification

## Large selection of probes

- **PA250 Single Crystal probe** for defined images and high frame
- **Phased array probes** for Pediatric and Neonatal patients
- **TEE probes** for Adult and Pediatric patients
- **Linear array probes** from 3 to 22 MHz
- **Microconvex** array probe
- **IH 6-18 High Frequency Hockey Stick probe**
- **Doppler pencil probes** Low, Mid, High Frequency ad for TCD examination

# Obstetrics and Gynaecology



## Advanced diagnostic tools

- **XLight** Advanced volumetric rendering technique
- **ElaXto** Full Strain Elastosonography package for multiple applications
- **AutoNT** Automatic Nuchal Translucency measurement
- **microV** High sensitivity, spatial resolution hemodynamic analysis for micro-vascularization
- **Virtual Biopsy** Clear visualization of needle insertion and path
- **Virtual Navigator** State of the Art Real-time Multiple modality Fusion Imaging Technology

# Interventional and Surgery



## Large selection of probes

- **C 1-8 Single Crystal convex array probes** for Difficult-to-scan patient
- **Lightweight 3D Convex and Endocavity probes**
- **LA332 Low Frequency Linear array probe** for optimized spatial image resolution
- **Biopsy dedicated Convex probe** with 0°, 5°, 15° needle insertion angle

## Advanced Diagnostic tools

- **Virtual Biopsy** Clear visualization of needle insertion and path
- **Virtual Navigator** State of the Art Real-time Multiple modality Fusion Imaging Technology
- **CnTI™** Full spectrum Contrast enhanced ultrasound (available also during Fusion Imaging)
- **ElaXto** Full Strain Elastosonography package for multiple applications (also in Fusion Imaging)
- **QElaXto** Shear Wave Tissue Stiffness Quantitative Assessment available also during Fusion Imaging (MyLab™Eight eXP)

## Large selection of probes

- **C 1-8 Single Crystal convex array probes** for Difficult-to-scan patients
- **Biopsy dedicated Convex probe** with 0°, 5°, 15° needle insertion angle
- **TRT33 Transrectal Dual array and Endocavity probes** with Transperineal biopsy kit
- **Linear, Convex, 3D Convex, Microconvex probes** with Reusable and/or Disposable multi-angle biopsy kits



@MPowered Engine



MyLab<sup>TM</sup>Eight  
MyLab<sup>TM</sup>Eight@XP



WideView 21.5" IPS Monitor

## Thank you for considering Esaote

We listen to your needs and work every day to provide the most advanced technologies and the most innovative design for you to excel in the patient care.



0123

### Esaote S.p.A.

Via di Caciolle, 15 50127 Florence, Italy, Tel. +39 055 4229 1, Fax +39 055 4229 208, [international.sales@esaote.com](mailto:international.sales@esaote.com)  
Via A. Siffredi, 58 16153 Genoa, Italy, Tel. +39 010 6547 1, Fax +39 010 6547 275, [info@esaote.com](mailto:info@esaote.com)  
Via E. Melen, 77 16152 Genoa, Italy, Tel. +39 010 6547 1, Fax +39 010 6547 275, [esaote@pec.esaote.com](mailto:esaote@pec.esaote.com)

#### FRANCE

Esaote Medical SAS  
ZA du Bel Air  
10, rue de Témar, 78105 Saint-Germain-en-Laye  
Tel. +33 1 8204 8900, Fax +33 1 3061 7210  
[info@esaote.fr](mailto:info@esaote.fr)

#### GERMANY

Esaote Biomedica Deutschland GmbH  
Max-Planck-Straße 27a  
50858 Köln  
Tel. +49 2234 688 5600, Fax +49 2234 967 9628  
[info@esaote.de](mailto:info@esaote.de)

#### SPAIN

Esaote España S.A.  
C/. Pont Reixat, 5  
08960 Sant Just Desvern, Barcelona  
Tel. +34 93 473 2090, Fax +34 93 473 2042  
[info@esaote.es](mailto:info@esaote.es)

#### THE NETHERLANDS AND BELGIUM

Esaote Benelux B.V.  
Philipsweg 1  
6227 AJ Maastricht  
Tel. +31 43 3824650, Fax +31 43 3824651  
[benelux@esaote.nl](mailto:benelux@esaote.nl)

#### UK

Esaote UK  
14, Cambridge Science Park  
Milton Road, Cambridge, CB4 0FQ  
Tel. +44 1223 424499, Fax +44 709 288 0231  
[infoUK@esaote.com](mailto:infoUK@esaote.com)

#### NORTH AMERICA

Esaote North America  
8000 Castleway Drive,  
Indianapolis, IN 46250  
Tel. +1 317 813 6000, Fax +1 317 813 6600  
[inquire@esaoteusa.com](mailto:inquire@esaoteusa.com)

#### BRAZIL

Esaote Healthcare do Brasil  
Rua Geraldo Flausino Gomes, 78  
CEP: 04575-060 São Paulo - SP  
Tel. +55 11 2789-0400 Fax +55 11 2789-0432  
[comercial@esaote.com.br](mailto:comercial@esaote.com.br)

#### ARGENTINA

Esaote Latinoamérica S.A.  
San Martín 551, Cuerpo "C", Piso 8, (C1004AAK) Buenos DLF IT Park, A - 44 & 45, Tower- C, Ground Floor,  
Sector- 62, Noida, Uttar Pradesh, India  
Aires  
Tel. +54 11 4326 1832, Fax: +54 11 4328 1245  
[info@esaote.com.ar](mailto:info@esaote.com.ar)

#### INDIA

Esaote Asia Pacific Diagnostic Private Limited  
18/F, 135 Bonham Strand Trade Centre,  
135 Bonham Strand, Sheung Wan, Hong Kong  
Tel. +852 2545 8386, Fax +852 2543 3068  
[esaote@esaotechina.com](mailto:esaote@esaotechina.com)  
[info@esaote.in](mailto:info@esaote.in)

#### HONG KONG AND FAR EAST

Esaote China Ltd  
18/F, 135 Bonham Strand Trade Centre,  
135 Bonham Strand, Sheung Wan, Hong Kong  
Tel. +852 2545 8386, Fax +852 2543 3068  
[esaote@esaotechina.com](mailto:esaote@esaotechina.com)

#### CHINA

Esaote Shenzhen Medical Equipment  
Room 2608, Tower B  
Beijing Global Trade Center  
36 North Third Ring Road East,  
Dongcheng District, 100013, Beijing  
Tel. +86 010 58257766, Fax +86 010 52257760

#### RUSSIAN FEDERATION AND CIS

Esaote S.p.A.  
18 Leningradsky prospekt  
Off. 5 and 6, Moscow 125040  
Tel. +7 495 232 0205, Fax +7 495 232 1833  
[esaotemoscow@yandex.ru](mailto:esaotemoscow@yandex.ru)

Technology and features are system/configuration dependent. Specifications subject to change without notice. Information might refer to products or modalities not yet approved in all countries.

CnTI™: The use of Contrast Agents in the USA is limited by FDA to the Left Ventricle opacification and visualization of the Left ventricle endocardial border.

MyLab™Desk SW only viewer is not intended or provided for an official diagnostic interpretation. For further details, please contact your Esaote sales representative.



Please visit us online for more information