

VME-2300 Imaging Processor

Observation	Video	Y/C, DVI, RGB, SYNC, AV	Observation	White balance adjustment	Press the switch to achieve the adjustment	
	Image Enhancement	Profile enhance, increase the sharpness of endoscopic images.		Power	Voltage	-110V/220V AC (± 10%)
	Color tone adjustment	"R"、"B" adjustment ± 50 steps			Frequency	50Hz/60Hz
	Brightness adjustment	"Y" adjustment ± 50 steps		Air pump	Air flow	≥ 5L/min
	Freeze	HD images can be frozen and review.			Air pressure	30-80kPa
	Review			Lighting	Bulb	LED
	Gain control	(OFF, 1, 2 and 3)			Colour temperature	≥ 3200K
	Metering mode	Average; Peak				

Video Gastroscope

VME-98

Model	VME-98
Working length	1050mm
Depth of field	3-100mm
Range of bending	U210° D90°
Range of bending	L100° R100°
Diameter of insertion tube	φ 9.6mm
Diameter of instrument channel	φ 2.8mm
View of field	140°

VME-92

Model	VME-92
Working length	1050mm
Depth of field	3-100mm
Range of bending	U210° D90°
Range of bending	L100° R100°
Diameter of insertion tube	φ 9.0mm
Diameter of instrument channel	φ 2.8mm
View of field	140°

Video Colonoscope

VME-1300

Model	VME-1300
Working length	1300mm
Depth of field	3-100mm
Range of bending	U180° D180°
Range of bending	L160° R160°
Diameter of insertion tube	φ 12.8mm
Diameter of instrument channel	φ 3.7mm
View of field	140°

VME-1650

Model	VME-1650
Working length	1650mm
Depth of field	3-100mm
Range of bending	U180° D180°
Range of bending	L160° R160°
Diameter of insertion tube	φ 12.8mm
Diameter of instrument channel	φ 3.7mm
View of field	140°

Aohua Endoscopy

Aohua Endoscopy Co., Ltd. was originally incorporated in 1994, a globally-renowned medical endoscope manufacturing company with products consisting of video endoscopy system, endoscopy peripheral equipment, endoscopic diagnosis and treatment device etc. And sales network covering more than 80 countries and regions in the world. Our mission is to take the lead of endoscopy technology innovation and push forward the technological progress of endoscopic diagnosis and treatment technology. We will proactively and constantly serve the cause of human health.

To date, more than 10,000 hospitals around the world are using Aohua endoscopy equipment. It is precisely because of the existence of Aohua who is providing abundant, easy to use and affordable endoscopic products and services that thousands of hospitals can carry out endoscopic diagnosis and treatment services. Aohua now provides end-to-end solution and service to end-users with digestive endoscopy equipment, endoscopic diagnosis and treatment consumables, surgical endoscopy products and peripheral devices.



+86-21-6768 1018

Aohua Endoscopy Co., Ltd.
 Location: NO.660 Shengang Road, Songjiang District, Shanghai, 201612, P.R.China
 Postcode: 201612
 Fax: 021-67681013
 Email: oversea-marketing@aohua.com

www.aohua.com



CE 0197
 ISO 9001/ISO 13485 Certified



Since 1994



HD Endoscopy System
 For Basic Medical Service

VME-2300

HD Endoscopy System

VME-2300

Basic screening has never been so clear.

Being the sole manufacturing enterprise who supplies endoscopic equipment + consumables in China, Aohua launched the first video endoscope in China, and has always been committed to the innovation, R&D and production. After more than 20 years of concentration and innovation plus more than 10,000 end-users experience accumulation, the whole series video endoscopy system have entered a "high-definition" era.

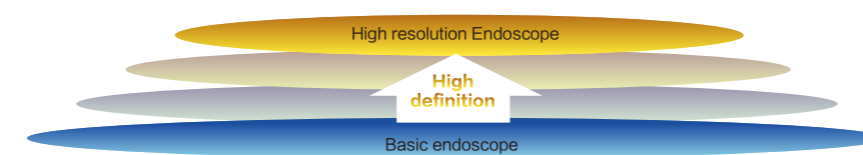


The high-definition endoscope system VME-2300 is developed and designed to fulfill the needs of basic medical examination and surgeries, with integration of high-definition images, Integrated imaging processor with light source, built-in LED light source and many other high cost performance, to perform faster and more accurate digestive system examination.



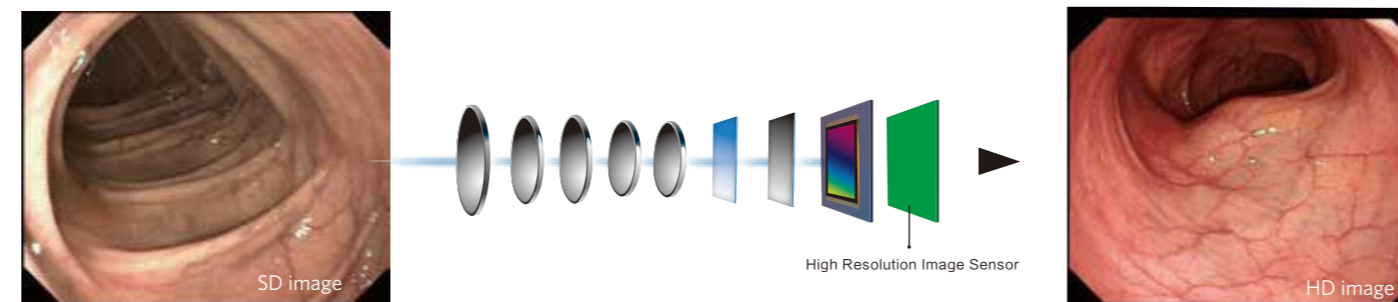
HD Breaking the routine

Aohua, originally incorporated in 1994, serves customers with innovative and dedicated technology plus excellent product quality, having become the world's leading provider of integrated endoscopy solutions. It is the first to break the routine to make the most basic products realize high-definition resolution, enabling the basic medical facilities to get to a higher level.



HD image sensor

High resolution and digital processing system to protect the endoscopic color and present the high-definition image.

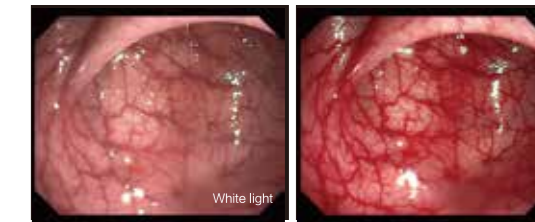


Brand-new Motus 3.0 image processing platform

- Fully digital image processing**
 Fully digital image processing, it has enhanced the image signal's SNR and reliability compare to 2.0 platform due to the deletion of the A/D process; Motus3.0 platform features a brand-new image sensor with higher image resolution, lower power consumption, and better photosensitivity.
- Higher data processing capacity**
 Higher data processing capacity, compared to 2.0 platform, it has more than 10 times computing power, 5 times memory bandwidth and 8 times memory capacity, all this makes it possible to easily process real-time image data with higher resolution and more computing power (such as HbE, Enh,etc.).
- High modularization**
 Its high modularization enables our latest research results into other Aohua products, make sure a high compatibility for all product line.
- A variety of interfaces**
 Motus 3.0 platform provides a variety of interfaces to facilitate connections with different equipment in operating room with USB, easy to keep images and videos.

(HbE) Hemoglobin Enhancement

The powerful upgraded HbE display function in VME-2300 can better highlight the hemoglobin in the blood and has obvious invigorating effect on the possible blood-flow direction in the diseased tissue.



Enhancement

The contour Enhancement function can give prominence to the scope and contour of pathological tissues, while underscoring the blood vessels and fibrous structure, making the images more clear and sharper."

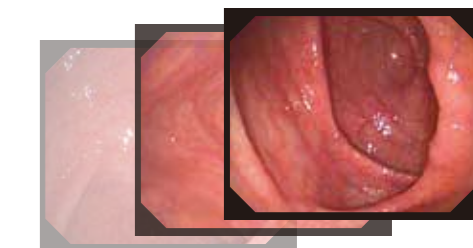
USB Storage Function

HD video and photo images can be stored , easy to be moved and checked.



Freeze Function

You can freeze the image in real time and view the frozen image through playback.



LED light Source

The built-in LED that has long lifetime and high cost performance can meet the brightness required for clinical examination, almost, you don't need to replace the bulb, which can greatly reduce the usage cost.

Ergonomic Handle

The ergonomic and easy-to-operate handle design allows more comfortable holding; reasonable key configuration renders the operation more convenient.



White Balance Cap

Ergonomic rotating makes it easy to use.

Details Optimization

The optimized design of the video connector makes the insertion and extraction more convenient operation.

