

---

# *Infa Warmer*

## ATOM Infant Warmer

---



# From the delivery room to NICU—Meets wide needs with substantial functions and features.

Superior operation performance and functionality will support daily nursing care.

## Pre-heating function

Pre-heating condition enables to treat a baby under warm condition right after delivery.

## Far-infrared radiation

High warming efficiency thanks to Far-infrared radiation.

## CPR timer

Integrated CPR timer in compliance with the international resuscitation consensus. APGAR timer is also integrated.

## Adjustable LED light

Even if the canopy is tilted, baby's skin color can be clearly checked thanks to the LED light. Light intensity can be adjusted.

## Drawer

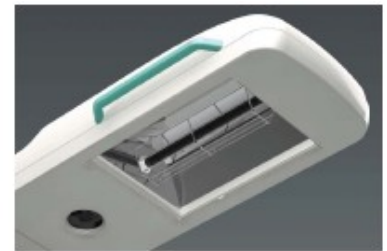
Drawer is available as an option. The drawer is closed very silently in order to minimize the sound stress to a baby.

## Baby Guard

Thanks to rotary damper, the baby guard can be opened very silently without touching.



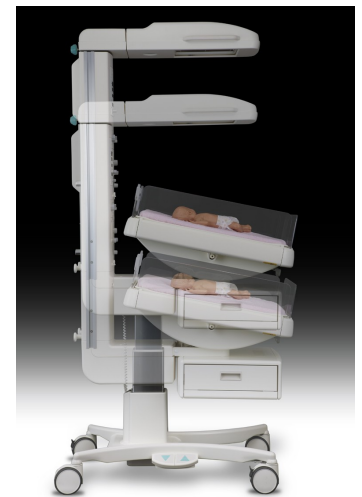
LED Light



Canopy



X-ray tray



Hi-Low Stand

## Add-on Unit

As add-on unit for Infant Warmer, two kinds of resuscitation unit are available depending on user's demand.

### Resuscitation Unit 104

Resusci—flow is integrated for safety resuscitation treatment.

- Manometer
- Resusci—flow
- Suction unit
- O2 Blender



### Resuscitation Unit 105

Oxygen Blender and manometer is integrated.

- Manometer
- O2 Blender
- Suction Unit



# Specifications

## Atom Infant Warmer Model 103

Power requirements	Customer specified Power consumption : 700VA (Maximum)
Heater capacity	500W
Classification	Class I, Type BF
Dimensions	84(W) X 110(D) X 178-218(H)cm (Mattress surface : 80-120cm)
Weight	105kg
Temperature control	Servo control (Manual control also available)
Skin temperature	Setting range : 34.0-38.0°C Display range : 30.0-42.0°C
Heater output	Setting range : 0-100% (in 5% increments) Indication range : 0-100 (in 10 levels)
Alarms	Skin temperature, skin temperature probe, check baby, system failure, main failure, canopy state
Timer	Time display range : 0-60minutes 00 seconds (in 1 second increments) APGAR mode /CPR mode switchable
Lighting	LED lamp Adjustable illumination intensity 0-1200lux
Mattress platform angle	Inclination angle (back and forth) : +13°~-13°
Communication port	RS-232
Accessories	Skin temperature probe (yellow) .....1 Dust cover .....1 Mattress sheet .....1

## Pulse Oximeter Unit

Display range	1-100%SpO2
Averaging time	8, 4, 16 seconds (Selectable)
SpO2 alarm setting range	Upper limit : 50-99% (in 1% increments) Lower limit : 45-95% (in 1% increments)
Pulse rate display range Pulse rate alarm setting range	25-240bpm Upper limit : 80-240bpm, OFF Lower limit : 35-180bpm, OFF (in 5bpm increments)
Alarms	SpO2 high/low limit, pulse rate high/low limit, SpO2 sensor

## Resuscitation unit 104

Manometer	Pressure indication : -2 ~ 8 kPa (-20 ~ 80cmH2O)
Suciton unit	Suction pressure control range : 0 ~ 26.7 kPa (0 ~ 200mmHg)
O2 Blender	Oxygen concentration control range : 21 ~ 100% Oxygen flow rate control range : 0 ~ 15L/min.
Resusci-flow unit	PMAX setting range : 19 ~ 58 kPa (20 ~ 60cmH2O) Default setting range : 39 kPa (40cmH2O)

## Resuscitation unit 105

Manometer	Pressure indication : -2 ~ 8 kPa (-20 ~ 80cmH2O)
Suciton unit	Suction pressure control range : 0 ~ 26.7 kPa (0 ~ 200mmHg)
O2 Blender	Oxygen concentration control range : 21 ~ 100% Oxygen flow rate control range : 0 ~ 15L/min.

Model Number	<b>Model 103</b>	
Power Requirement	AC120V	AC220-240V
SpO2 Masimo	△	△
SpO2 Nellcor	△	△
Weight Monitor	△	△
Optional Add-on Unit		
Resuscitation unit 104 PV	△	△
Resuscitation unit 104 EV	△	△
Resuscitation unit 105 PV	△	△
Resuscitation unit 105 EV	△	△

△ : Add-on Unit

<Note>

104 PV: T-Piece Resuscitation Unit with Blender and Suction Unit (connect to central piping system)

104 EV: T-Piece Resuscitation Unit with Blender and Suction Unit of ejector type to make suction operation possible where no suction line is available

105 PV: O2 Blender Unit and Suction Unit (connect to central piping system)

105 EV: O2 Blender Unit and Suction Unit of ejector type to makes suction operation possible where no suction line is available

Manufacturer: **Atom Medical Corporation**

Exporter: **Atom Medical International, Inc.**

Iwakata Bldg., 3-18-16, Hongo, Bunkyo-ku, Tokyo, JAPAN

Phone: + 81 3 3815 2941

Fax: + 81 3 3812 9670/4080

URL: <http://www.atom-ami.co.jp>

