

- 
- A black Fujifilm ER-530T Video Rhino-Laryngo Endoscope is shown against a dark teal background with circular graphic elements. The device features a control handle with a 'D' button and a '3' button, a main shaft with a '15' and '20' marking, and a long, flexible insertion tube. A small inset image in the bottom left shows a close-up of the curved tip of the endoscope.
- HIGH RESOLUTION
 - LARGER AND BRIGHTER IMAGES
 - ENHANCED ACCURACY

ER-530T

Video Rhino-Laryngo Endoscope



ER-530T

Realizing enhanced observation, diagnosis and treatment



HIGH RESOLUTION

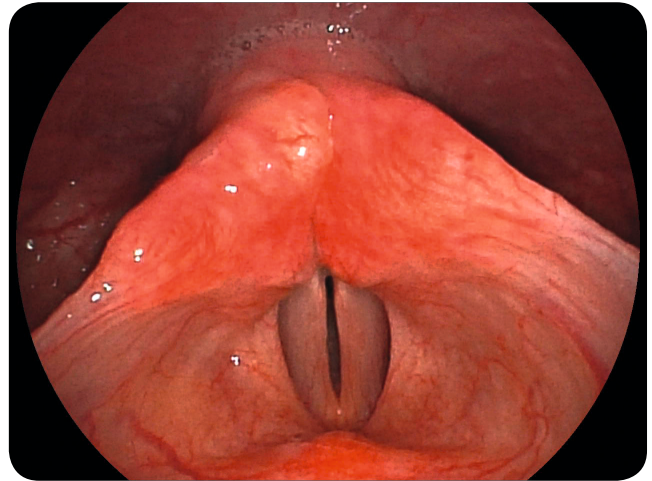
High resolution Super CCD technology is used in this new Rhino-Laryngo endoscope. This increase in image quality can help to enhance observation.

LARGER AND BRIGHTER IMAGES

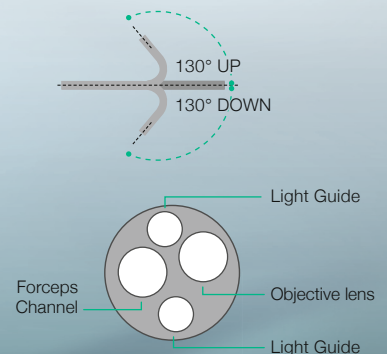
The image on the monitor can be displayed 1.4 times larger than conventional models and 140° field of view can be obtained. The new optical system allows brighter images to be produced.

ENHANCED ACCURACY

Used in combination with VP-4450HD and FICE (Flexible spectral Imaging Color Enhancement),* it provides better contrast for vascular and surface patterns in close focus, emphasizing the structure of tissue aspects and vessels. These features help to increase the accuracy of observation, diagnosis and treatment.



| | |
|---------------------------|----------------------|
| Viewing direction | 0° (Forward viewing) |
| Field of view | 140° |
| Observation range | 2 – 50 |
| Bending capability | Up 130° / Down 130° |
| Distal end diameter | 5.4 mm |
| Flexible portion diameter | 4.9 mm |
| Forceps channel diameter | 2.0 mm |
| Working length | 400 mm |
| Total length | 670 mm |



* Fujifilm proprietary image processing technology