



patent number: ZL200930032857.1

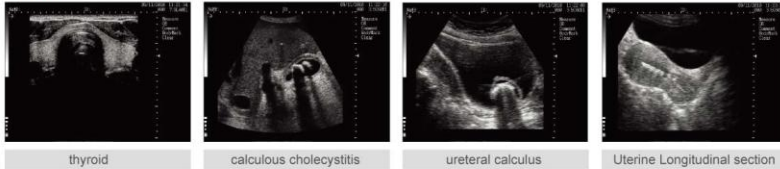
More classic practical functions

- Scanning mode: B、2B、4B、B/M、M
- Full field image with 8 levels depth adjustment
- Local zooming function
- Dynamic range: 27-90dB, visual adjustment
- Four kinds Angles /Width changeable
- Image storage:100 frames permanent storage, without loss of the image when powered off
- Cine loop: 256 frames
- Measurement: Distance, circumference, area, volume, heart rate, gestational weeks, fetus weight, expected date of childbirth, etc.
- High-speed USB-A port: Supporting Large-capacity USB flash disk and mouse
- High-speed USB-B port: transfer image to PC (Optional Case Report Processing Software)

Configuration

- Standard configuration: (1) Main unit :1pc (2) 3.5MHz convex multi-frequency probe : 1pc (3) Charger: 1pc (4) Internal lithium battery: 2 pcs (5) Neck-belt: 1pc (6) Bracket : 1pc (7) Leather case : 1pc
- Optional Configuration: 6.5MHz intra-vaginal multi-frequency probe, 7.5MHz high multi-frequency probe, 5.0MHz multi-frequency micro convex probe, car charger, Goggle

Gallery



thyroid

calculous cholecystitis

ureteral calculus

Uterine Longitudinal section

Optional probe



7.5MHz high multi-frequency probe

6.5MHz intra-vaginal multi-frequency probe

3.5MHz cardiac multi-frequency probe

5.0MHz multi-frequency micro convex probe

KAI XIN[®]
 XUZHOU KAI XIN ELECTRONIC INSTRUMENT CO.,LTD.

ADD:Kaixin Mansion, C-01, Economic Development Zone, Xuzhou, Jiangsu, China.
 Zip Code: 221004
 Tel: +86-516-87732932/87733758
 Fax: +86-516-87732932/87792848
 Http://www.kxele.com
 Business:info@kxele.com
 Service:service@kxele.com

DISTRIBUTOR

THE PRODUCT TAKES REAL OBJECT AS QUASIF ANY FLUCTUATION HAPPENS.FORGIVING NO ANOTHER NOTICE IN THE LINE.

VERSION NO. — ZL-10-ENS200-001

KX5200

Full-digital B mode Ultrasound Scanner

full digital beam-composite digital-control dynamic frequency scanning real time dynamic frequency scanning
 real time dynamic sound velocity super-broadband frequency conversion technique real time dynamic aperture imaging

KAI XIN[®]
 Research Center for Ultrasound Medical
 Application Engineering Technology of
 Jiangsu Province,China



Create the health with science and technology

KX5200

Main unit

Smart design and internal battery of KX5200 make the diagnosis more convenient and bring your new mobile using experience.



Support reading image and storing image through USB



Easy change of different probes



Instrument bracket



Features



180 min x 2

Two large-capacity lithium batteries to drive the main unit to work for about 360 minutes



8 kinds of internal Pseudo color display



5.7" high resolution color TFT LCD monitor, forming a clear image under the sunshine for special treatment.



1.1Kg

Weight of main unit is 1.1Kg, small and smart



Backpack integration design, support outdoor emergency at any time



The main unit with the splash-proof, dust-proof function, easy to clean.