

KX 2600

Full Digital B Mode Ultrasonic Diagnostic Instruments

Create the health with science and technology

Standard Configuration

Main unit	1 PC
3.5MHz multi-frequency convex probe	1 PC

Optional Configuration

- 3.5MHz micro-convex probe
- 6.5MHz transvaginal probe (multi frequency)
- 7.5MHz high frequency linear probe (multi frequency)
- 5.0MHz micro-convex probe (multi frequency)
- Thermal print
- laser printer
- Software of case report process center
- Trolley



Edition No. ZL-EN-2600-09-01



KX 2600

Full Digital B Mode Ultrasonic Diagnostic Instruments

09 edition

KAI XIN[®]
XUZHOU KAI XIN ELECTRONIC INSTRUMENT CO.,LTD.

ADD: Kaixin Mansion, C-01, Economic Development Zone, Xuzhou, Jiangsu, China. Zip Code: 221004
TEL: +86-516-87732932 / 87733758 FAX: +86-516-87732932 / 87792848
Http://www.kxcele.com

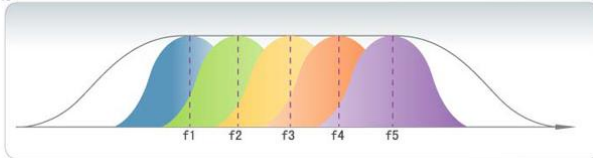
KAI XIN[®]

THE PRODUCT TAKES REAL OBJECT AS QUASI. IF ANY FLUCTUATION HAPPENS, FORGIVING NO ANOTHER NOTICE IN THE LINE.

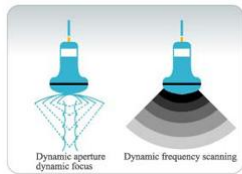
KX 2600

Full Digital B Mode Ultrasonic Diagnostic Instruments

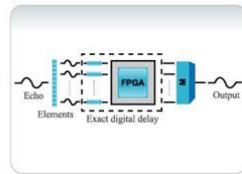
- 1.Full digital technology
- 2.Full digital beam-composite
- 3.Digital-control dynamic frequency scanning
- 4.Real time dynamic frequency scanning
- 5.Real time dynamic aperture imaging
- 6.Real time dynamic sound velocity apodization
- 7.Super-broadband frequency conversion



Probe super-broadband frequency & frequency conversion



Real time dynamic aperture, dynamic frequency scanning, dynamic sound velocity apodization and dynamic filter



Adopt digital beamcomposite



Full-scale & abundant measurement analysis software and report

1. Normal measurement : distance, circumference, area, volume, angle, stenosis (length,area) , etc.
2. OB measurement and analysis software : BPD, CRL, GS, HL, TAD, TBD, APBD, HC, AC, GA, EFW, ET, LV, THD, TCD, OFD, AFI, LMP and Report
3. Cardiac measurement and analysis software : M routine(depth, slope, heart rate, cycle) , left ventricle function, mitral valve, aorta, ejection period, cardiac muscle weight, etc and Report.
4. GYN measurement and analysis software : uterus volume, endometrium thickness, ovary volume, superior ovarian follicle, uterine neck long dia, etc and Report.
5. Urology measurement and analysis software : residual urine, volume of prostate and Report

KX 2600

Full Digital B Mode Ultrasonic Diagnostic Instruments



Wide application in clinic



- Intelligentized TGC adjustment
- Biopsy guide with 2 adjustable(angle & position)guide lines
- Depth hoist and local zooming
- Full scale image, 28 grades depth adjustment
- Image processing: preprocess (continuous dynamic focus aperture,dynamic filter) , post-process (4 grades gamma correction), frame correlation ,black /whitereversal , left /right reversal,up /down reversal,edge enhancement,ect
- Intelligent automatic focus control to get the idealimage at any depth, always show the best image

Powerful function



- 2 sockets probe connector (automatic identification)
- 256 frames cine loop
- 100 frames permanent image storage
- Flash disk storage, one-key store, software upgrade
- USB-A socket for flash disk to store images directly
- USB-B socket for flash disk to store images directly, USB-B socket for transferring the real image picture to PC (optional software of case report process center)
- The machine can be connected with ordinary laser printer appointed by the manufacturer to print image and report

Gallery



Ectopic Pregnancy

Thyroid

Kidney Puncture

Eyeball

Probe



Standard Probe:
3.5MHz convex probe
(2.0/2.5/3.5/5.0MHz)



Optional Probe:
7.5MHz high frequency linear probe
(5.0/6.5/7.0/9.0MHz)



Optional Probe:
6.5MHz transvaginal probe
(4.0/5.0/6.5/7.5MHz)



Optional Probe:
5.0MHz micro-convex probe
(3.5/4.5/5.0/5.5MHz)