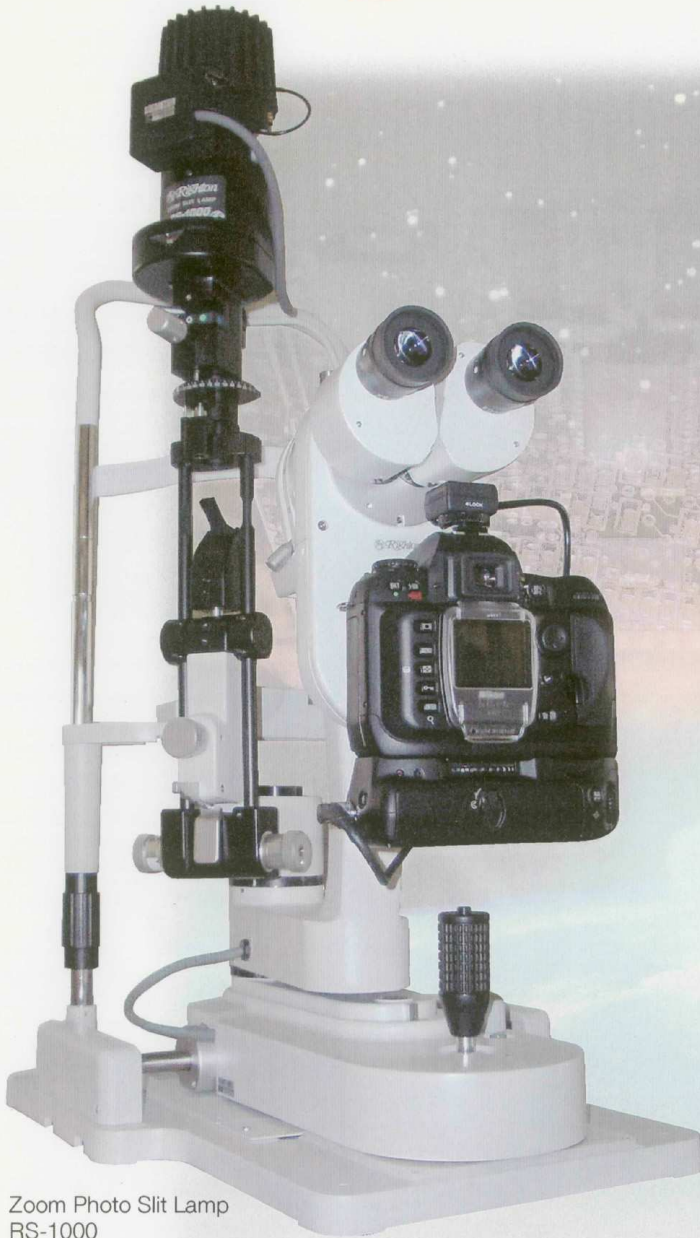


RT Righton

*Zoom Photo Slit Lamp
RS-1000*

New
Version

Digital Photo Set



Zoom Photo Slit Lamp
RS-1000

Features

- Direct, true images with no programmed modification.
- High-resolution digital images with 6 million pixels.
- Displays the largest pictures quickly (approx. 5 sec.)
- Flash capability enables capture of various images, from anterior segments to vitreous and fundus photos.
- Possible to attach Nikon FS-3/FS-3V
- Nikon D100 employed as the camera back (available from RIGHT MFG.)
- The Slit Lamp has renowned fine zoom optics.
- Program power box accurately controls flash power by such means as pressing the eye part.

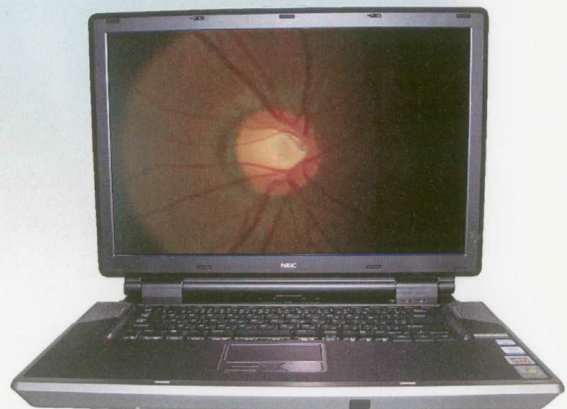
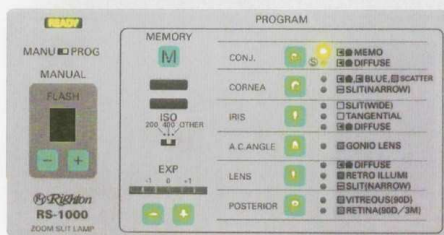


Photo of the fundus of the eye



Program power box

RIGHT MFG. CO., LTD.

Tokyo, Japan