



Create the health with science and technology

# KX5100

| B MODE ULTRASOUND SCANNER |

## KX5100

B MODE ULTRASOUND SCANNER

### | Configuration |

- > Standard: Main unit: 1 PC  
Silica gel base 1 PC  
Metal case 1PC  
3.5MHz multi-frequency convex probe 1 PC  
Internal battery 2 PCS  
Power supply adapter 1PC  
Pseudo color
- > Optional: 6.5MHz multi-frequency transvaginal probe  
7.5MHz multi-frequency linear probe  
5.0MHz multi-frequency micro-convex probe  
Thermal printer  
Goggle  
Neck-belt  
Software of case report process center



**KAI XIN**<sup>®</sup>

XUZHOU KAI XIN ELECTRONIC INSTRUMENT CO.,LTD.

FOR MORE DETAILS,LOG ON WWW.KXELE.COM

ADD: Kaixin Mansion, C-01, Economic Development Zone, Xuzhou, Jiangsu,  
China. Zip Code: 221004  
TEL: +86-516-87732932 / 87733758 FAX: +86-516-87732932 / 87792848  
Http://www.kxele.com  
Business:info@kxele.com Service:service@kxele.com

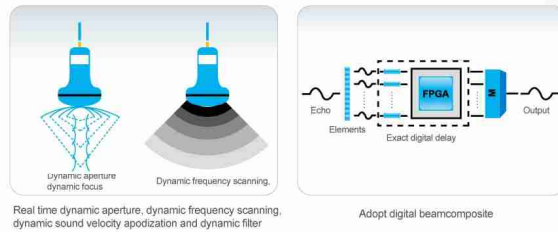
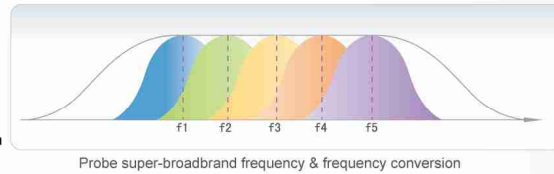
THE PRODUCT TAKES REAL OBJECT AS QUASI, IF ANY FLUCTUATION HAPPENS, FORGIVING. NO ANOTHER NOTICE IN THE LINE.



# KX 5100

B MODE ULTRASOUND SCANNER

- Full digital technology
- Full digital beam-composite
- Digital-control dynamic frequency scanning
- Real time dynamic frequency scanning
- Real time dynamic aperture imaging
- Real time dynamic sound velocity apodization
- Super-broadband frequency conversion



## Powerful functions



- Scanning mode: B, 2B, 4B, B/M, M
- Full vision image with 8 steps adjustment
- Measurement: distance, circumference, area, volume, heart rate, pregnancy week, fetus weight, EDD, etc
- Internal pseudo color
- Energy saving
- Puncture guide with two adjustable (angle & position) guide line

## Powerful image processing



- Image storage: 100 frames image storage
- Cine loop: 256 frames
- USB port-A for flash card memory and optional mouse
- USB port-B for real-time image transfer to PC (with optional software)

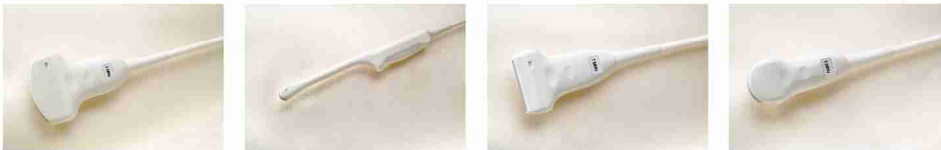
## Ideal hardware configuration



- 6.4' high resolution color TFT LCD
- Silica gel base for main unit and probe
- 2 pcs internal batteries can drive the main unit to work for about 2 hours
- Optional car charger
- Weight of main unit: 1.5kg

## Advanced probe technology

- broadband multi-frequency probe from 2.0MHz to 9.0MHz



3.5MHz multi-frequency convex probe 6.5MHz multi-frequency transvaginal probe 7.5MHz multi-frequency linear probe 5.0MHz multi-frequency micro-convex probe

## Gallery



Create the health with science and technology