



Create the health with science and technology

| Configuration |

- > Standard: Main unit: 1 PC  
Metal case 1PC  
3.5MHz multi-frequency convex probe 1 PC  
Internal battery 2 PCS  
Power supply adapter 1PC  
Pseudo color
- > Optional: 6.5MHz multi-frequency transvaginal probe  
7.5MHz multi-frequency linear probe  
5.0MHz multi-frequency micro-convex probe  
Thermal printer  
Goggle

# KX5000

B MODE ULTRASOUND SCANNER



超声设备 ZL-5000 (09)-01

# KX5000

| B MODE ULTRASOUND SCANNER |



**KAI XIN**<sup>®</sup>

KUZHOU KAI XIN ELECTRONIC INSTRUMENT CO.,LTD.

FOR MORE DETAILS, LOG ON WWW.KXELE.COM

ADD: Kaixin Mansion, C-01, Economic Development Zone, Xuzhou, Jiangsu,  
China. Zip Code: 221004  
TEL: +86-516-87732932 / 87733758 FAX: +86-516-87732932 / 87792848  
Http://www.kxele.com  
Business:info@kxele.com Service:service@kxele.com

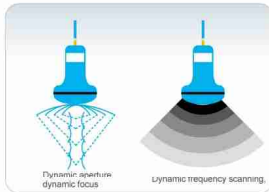
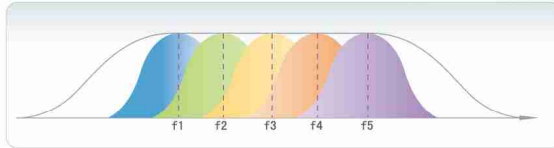
THE PRODUCT TAKES REAL OBJECT AS QUASI; IF ANY FLUCTUATION HAPPENS, FORGIVING NO ANOTHER NOTICE IN THE LINE.



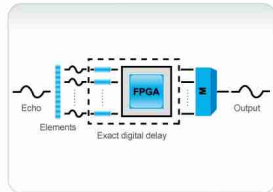
# KX 5000

## B MODE ULTRASOUND SCANNER

- Full digital technology
- Full digital beam-composite
- Digital-control dynamic frequency scanning
- Real time dynamic frequency scanning
- Real time dynamic aperture imaging
- Real time dynamic sound velocity apodization
- Super broadband frequency conversion



Real time dynamic aperture, dynamic frequency scanning, dynamic sound velocity apodization and dynamic filter



Adopt digital beam composite

### Powerful functions



- Scanning mode: B, 2B, 4B, B/M, M
- Internal pseudo color
- Image processing: continuous dynamic focus, dynamic aperture, dynamic filter, gamma correction, black/white conversion, left/right conversion, up/down conversion, edge enhancement, etc
- 64 kinds body marks with position mark
- Puncture guide with two adjustable (angle & position) guide line

### Powerful image processing



- Image storage: 100 frames image storage
- Cine loop: 256 frames
- OB table: BPD, CRL, GS, FL, HL, TAD, TBD, APBD, HC, AC, GA, EFW, FT, LV THD, TCD, OFD

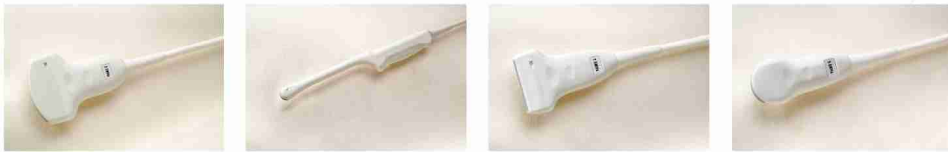
### Ideal hardware configuration



- 10.4" high resolution color TFT LCD
- USB port for flash card memory
- 2 pcs internal batteries can drive the main unit to work for about 200 minutes
- Optional car charger
- Metal case

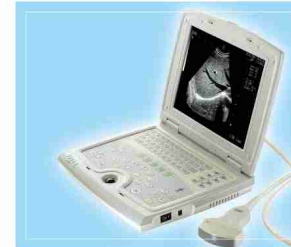
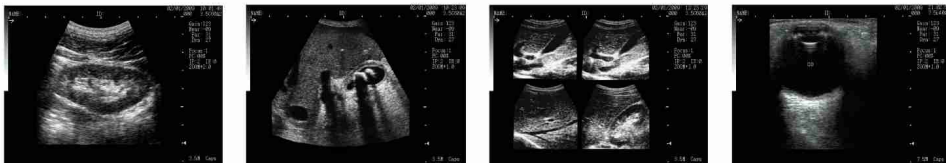
### Advanced probe technology

- broadband multi-frequency probe from 2.0MHz to 9.0MHz



3.5MHz multi-frequency convex probe   6.5MHz multi-frequency transvaginal probe   7.5MHz multi-frequency linear probe   5.0MHz multi-frequency micro-convex probe

### Gallery



Create the health with science and technology