

MAQUET

CEILING SERVICE UNIT MODUTEC THE ULTIMATE USER EXPERIENCE

SURGICAL WORKPLACES





MODUTEC **THE ULTIMATE USER EXPERIENCE** **MAQUET – THE GOLD STANDARD**



MAQUET S.A., member of the Medical Systems division of the GETINGE group, is the centre of excellence for surgical lights and ceiling service units. Planning and installing an operating unit or intensive care unit requires the collaboration of many different fields of expertise. With its long experience in operating rooms, MAQUET S.A. is the best partner in equipping hospital care areas, in ensuring enhanced efficiency and providing the most comfortable working conditions.

With its wealth of hospital experience, MAQUET S.A. offers a new range of ceiling service units, which find their fullest application in operating rooms, intensive care and emergency units:

- Efficiency: compact design of the distribution modules, excellent rigidity of the arms for ease of movement, complete integration of multimedia cables, modular positioning of accessories on the modules.
- The ideal environment: ambient LED lighting for improved comfort, a wide selection of colours, hygienic and compact design all contribute to create the ideal environment for medical care teams.
- Planning and installation are made even simpler.

MAQUET – The Gold Standard.

THE ULTIMATE USER EXPERIENCE MODUTEC

MODUTEC distribution arms (LIGHT, MEDIUM, STRONG and HEAVY) combined with the modules (TONIC, QUADRA, MOBILI or NEST) are the most compact on the market. In order to meet the requirements of intensive care units and operating rooms, the MODUTEC range includes rigid arms, distribution modules that meet the most stringent hygiene standards and fixed columns that are resolutely practical.

Modularity and extreme compactness: intended for installations where space is often a decisive factor, the MODUTEC range - and especially its distribution modules - has been designed to particularly address the need for compactness. Yet it offers more connection options and much shorter cable links, due to its vertical design with gas connectors on the front and equipment positioned on the shelves or drawer units.

Ergonomic design and height adjustment: MODUTEC modules have been designed to revolutionise existing standards in ergonomics and to be fully adapted to their user. The rounded finish on the beams and modules make MODUTEC configurations more attractive and more reliable for day-to-day use.

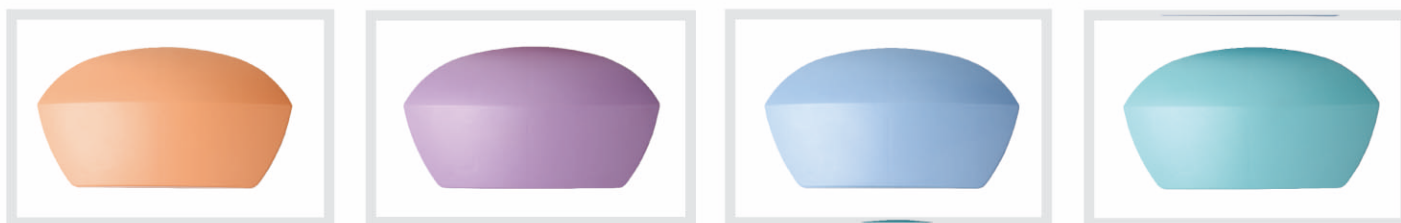
A wide range of shelves, monitor supports and various accessories can be adjusted to the preferred user height and

fitted on all panels of the distribution module (front, side, rear). A rotary clamp enables a 360° shelf or monitor rotation around the distribution tube of the TONIC module. This feature increases MODUTEC modularity.

Design and hygiene: the elegant MODUTEC design incorporates strips and joints, which conveniently conceal all the distribution module channels. No screws or channels are visible, which helps with cleaning and reduces the risk of bacteria.

Innovation at the service of the end-user — LED inside: the ambient LED lighting located on the two sides of the modules provides a gentle light. In multimedia mode this "LED inside" improves the effectiveness of the operating unit by enabling a more precise viewing of the images on the screens and completely reducing any glare effect. It improves the ease of day-to-day use and enables completely safe viewing of equipment installed on the MODUTEC shelves. In intensive care departments, and at night, ease of use and safety are priorities.

A touch of colour for further adaptation to your working environment: the MODUTEC range offers a choice between five colours (pearl grey, water green, peach, pale blue and lavender) for some of its elements : the end covers of the beams, handles, and shelf and drawer corners.



The coloured touch: peach, lavender, pale blue and water green.



*Light Arm LL 9.9
Touch screen holder on NEST
Rotary clamp (drawer unit)
on the TONIC column*

DESIGNED FOR EFFICIENCY MODUTEC

Maximum rigidity: the beams can be moved around easily due to the considerable rigidity of the beams. Combined with friction brakes, this rigidity provides maximum stability for the workstation. Optional electro-pneumatic brakes, with a long lifetime, immobilise the arm in complete safety regardless of position. Designed to support heavy loads, it can still be manipulated very smoothly.

Very high capacity: the very large channel inside the beams is ideal for current and future capacity requirements (including multimedia use). The MODUTEC range - from the light arm to the high capacity arm - has a reach of 60 to 240 cm using the combination of single or double arms. This provides excellent flexibility and modular site integration.

*NEST MOD 405 with TONIC
MOD 401 column and drawer unit
on rotary clamp*

*Two flat screens side by side
can be manipulated independently
and also positioned horizontally*



MODUTEC prepares for the future: the MODUTEC range incorporates all the sockets and connections all the way to the ceiling that are essential for handling the various signals used in video, monitoring and telemedicine. The option of cable management outputs on the module section offers even

greater flexibility in the choice of telemedicine partners. Cables are thus easy to install and are given lasting protection. MODUTEC panels support all kinds of sockets, including multimedia and video sockets, as well as telephone and nurse call sockets.

*Video camera with
motorised zoom
integrated into the X'TEN light*

*MOBILI MOD 1203
with LED inside lighting
and cable management
outputs*

*Telemedicine
MAQUET OTY VIEW*



THE OPTIMISED SOLUTION FOR EACH APPLICATION **MODUTEC**



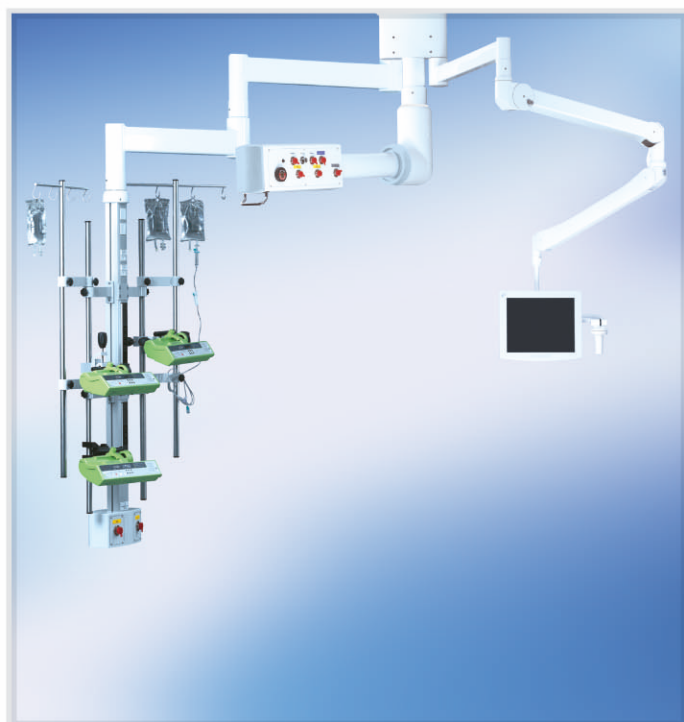
SURGERY: NEST MOD 403 Module 400 mm high and 400 mm TONIC MOD 401 extension module. A fixed shelf and drawer unit on a rotary clamp.



ENDOSCOPY: MOBILI MOD 1203 Module, 1200 mm length with 3 shelves, 1 drawer unit and 2 flat screen / touch screen holders. LED inside option.



ANAESTHESIA: QUADRA MOD 1202 distribution module - 1200 mm length - with CART 103 monitor holder.



ANAESTHESIA: SATELITE platform with dual perfusion holder, with gas control box, PL G 12.0 distribution arm and flat screen holder.

FUNCTIONAL AND ATTRACTIVE DETAILS **MODUTEC**



*Winding cable for easy storage and perfect hygiene:
open position.*



*Winding cable for easy storage and perfect hygiene:
closed position.*



*Cable management outputs on one panel of the
distribution module.*



Aluminium handle for a comfortable manipulation.



Stylish design of the pneumatic brake buttons.

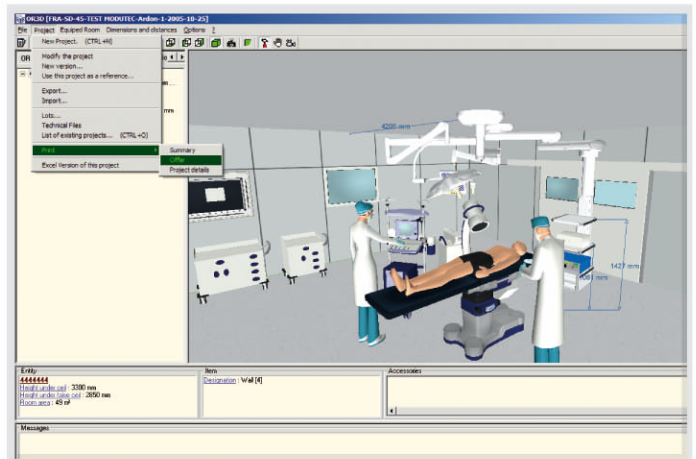


*Control button with dimmer of the ambient light: Led
Inside.*

TAILORED PLANNING AND SIMPLIFIED INSTALLATION MODUTEC



Ease of communication with OR3D software.



OR3D software: ease of user interface

Simplified and tailored planning that perfectly integrates user requirements: MODUTEC configurations come as close as possible to the needs of the user. Without being unique parts, ceiling service units are manufactured taking into account the exact specifications of their final environment. In order to improve the quality of this service, MAQUET has designed an original software package to process customer requirements and provide in virtual 3D the desired configuration, including an exact quotation per product, room or batch. Products are tailor made and supplied rapidly.

Transparent communications: configurations such as the size of the modules, the type and position of the sockets, the initial height of accessories can all be adjusted to create the

optimum working space. These specifications are automatically listed on the client quotation and installation parameters. Tailored configurations are sent directly to the production line via the OR3D software. This reduces the possibility of any communication error.

Reduced installation time: client configurations are fully pre-assembled in the factory. The height of accessories can be adjusted on site following installation, in order to fully adapt to your working environment.

Quality control: each installation, and particularly its gas equipment, is subject to a rigorous quality control process prior to delivery to the hospital site.

TECHNICAL DATA

MODUTEC

CAPACITY IN TERMS OF SOCKETS AND CONDUITS OF THE MODUTEC DISTRIBUTION MODULES

Modules Range	Max. Conduits	Distribution Modules	Number of Panels	Electrical sockets per Panel 60 mm apart	Gas sockets per Panel 100 mm apart	Cable channel outputs per Module
TONIC	8	TUBDIS 1001	1	12	7	
		TUBDIS 1201	1	12	17	
		TUBDIS 1401	1	18	11	
		TUBDIS 1601	1	18	11	
		TUBDIS 1801	1	25	15	
		TUBDIS 2001	1	25	15	
		TUBDIS 2201	1	25	15	
		TUBDIS 2401	1	25	15	
QUADRA	8	MOD 402 - EXT MOD 402	2	5	3	4 incl.
		MOD 802 - EXT MOD 802	2	12	7	6 incl.
		MOD 1202 - EXT MOD 1202	2	18	11	10 incl.
		MOD 1602	2	25	15	12 incl.
MOBILI	12	MOD 403	3	5	3	3 opt.
		MOD 803	3	12	7	7 opt.
		MOD 1203	3	18	11	11 opt.
NEST	16	MOD 405	5	5	3	3 opt.
		MOD 805	5	12	7	7 opt.
		MOD 1205	5	18	11	11 opt.
QUADRA	8	EXT MOD 402	2	5	3	4 opt.
		EXT MOD 802	2	12	7	6 opt.
		EXT MOD 1202	2	18	11	10 opt.

GROSS LOADINGS (KG) ON MODUTEC DISTRIBUTION ARMS

Motion space Range of Arm	6.0	9.0	12.0	6.6	9.6	9.9	12.9	12.12
Reach (mm)	600	900	1200	1200	1500	1800	2100	2400
Light Arm Type LL (Kg)	311	231	---	176	140	115	---	---
Medium Arm Type MM (Kg)	350	308	242	235	187	154	126	106
Strong Arm Type HM (Kg)	350	350	291	---	---	193	160	136
Heavy Arm Type HH (Kg)	---	---	---	350	350	345	290	250
PL G 12-0 Spring Arm	---	---	30	---	---	---	---	---

MAQUET

MAQUET S.A.
Parc de Limère
Av. de la Pomme de Pin
CS 10008 Ardon
45074 ORLEANS Cedex 2, France
Phone : +33 (0) 2 38 25 88 88
Fax : +33 (0) 2 38 25 88 00
info@maquet-sa.fr
www.maquet.com

GETINGE

GETINGE Group is a leading global provider of equipment and systems that contributes to quality enhancement and cost efficiency within healthcare and life sciences. Equipment, services and technologies are supplied under the brands ARJO for patient hygiene, patient handling and wound care, GETINGE for infection control and prevention within healthcare and life science and MAQUET for Surgical Workplaces, Cardiopulmonary and Critical Care.