

Slit Lamps *classic and digital*

**Each user has personal
needs and expectations of its perfect slit lamp.**



**Thanks to 30 years of experience
b o n offers Germany's largest slit lamp family.**

Here everyone can find the right tool for his daily work!





The right tool for everyone

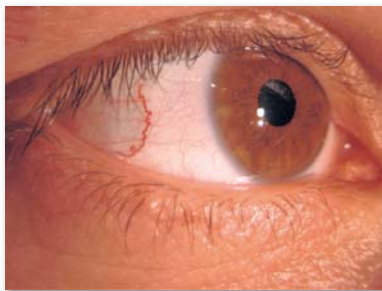
Each user has personal desires and expectations of his perfect slit lamp.

today **b o n** offers the most comprehensive slit lamp family. Here everyone can find the right instrument: from the entry level "SL-E" for the CL-fitter with 2x changer up to the "DigiPro" series with a comfortable 5x changer, 40x magnification and an integrated high-end camera chip.

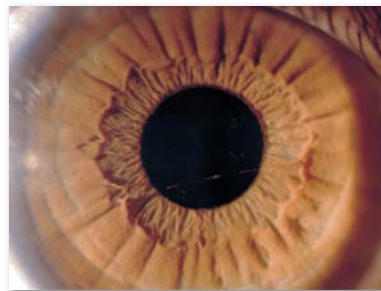
Our models guarantee a high technical standard and are suitable for all examinations on the eye, even for demanding endothelium observations.

Already for decades their excellent high-resolution optics are convincing thousands of users worldwide. The modern LED lighting represents the current state of technology, as it ensures perfect light at each examination and also saves energy. The brightness control is comfortably located at the slit lamp base.

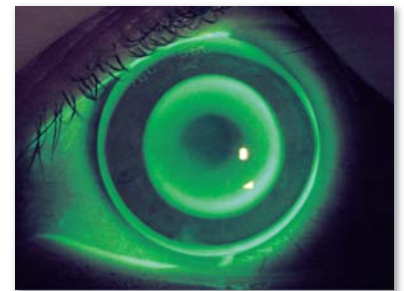
The proven one-handed operation makes work easier. It makes you move the slit lamp quickly and accurately in the three coordinates. The possibility of slit decoupling and the integrated yellow filter (not SL-E model) are expanding the diagnostic possibilities.



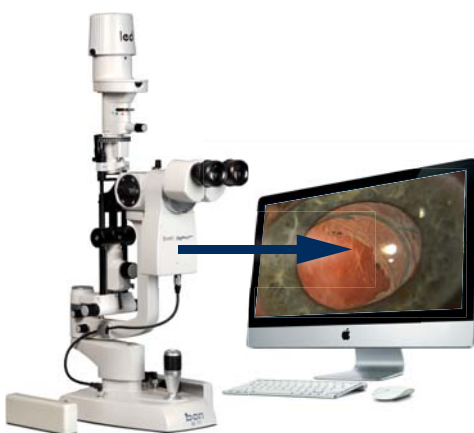
overview



iris



fluorescein



DigiPro3^{HD} 75

DigiPro3^{HD} makes quality visible.

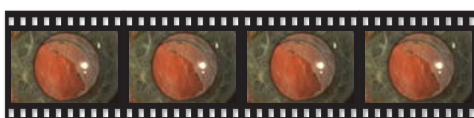
The DigiPro slit lamp series provides an integrated high-end camera chip, which has been specifically developed for ophthalmic applications. It guarantees superior transmission values compared to a conventional beam splitter.

Enjoy photos, videos and even **full-screen live streams** with unmatched sharp details. Even most demanding endothelium and fundus images are possible **without a flash**.

The trigger for the camera is conveniently located right on the joystick of the slit lamp base. A background illumination device is included. DigiPro also offers automatic R / L detection.

The advanced "**Selective Sharpness**" algorithm minimizes image noise providing detail enhancement at high magnifications. An automatic white balance improves true color image reproduction.

The clever **multi-shot** feature assists you to always get the wanted picture.



multi-shot feature

Of course DigiPro can be integrated into all common practice applications.



SL-75 elite

DigiPro3^{HD} elite

elite - The premium slit lamps from b o n

The slit lamps of the exclusive "elite" series are the top models of the **b o n** slit lamp family. From 30 years of experience in ophthalmology we developed modern premium class tools.

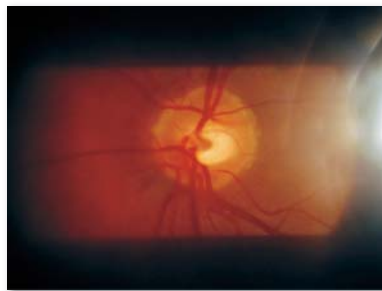
The timeless "hammer blue finish" design appears elegant and high quality at first glance.

Their optimized **light alloy mechanics** are convincing with unique smoothness and soft detents. The excellent, coated optics ensure maximum depth of field.

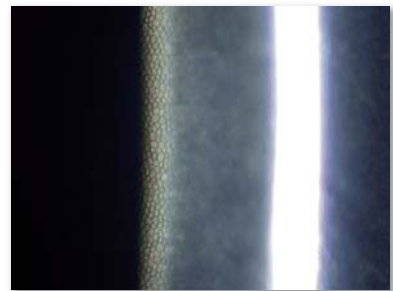
You have two "elite" models to choose from: The "**DigiPro3 elite**" including a digital high-end camera module, represents the current highlight. The model "**SL-75 elite**" is already fully prepared for easy retrofitting of the camera module. It enables low-cost entry into the premium class with the possibility of a later addition.



details



fundus (with VOLK lens)



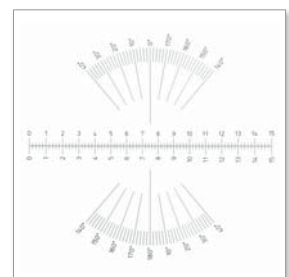
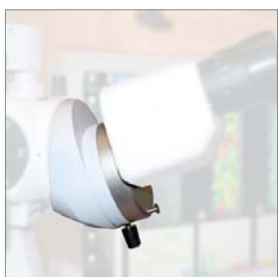
endothelium

Software

The DigiPro camera module includes the advanced Phoenix software. It's network-compatible database is **unlimited** and ensures comfortable managing of your images and videos. The integrated image processing enables convenient marking, drawing, annotating and measuring **directly in the picture**. Phoenix allows perfect interaction of the DigiPro with the fundus camera, topography system, Scheimpflug camera and specular microscope - all working with the same software.

Accessories

You will find a broad range of practical accessories suitable for our slit lamps such as applanation tonometers, digital cameras, Hruby-lenses, image processing software, chin rest paper, measuring eye pieces, second observer tubes, optical beam splitters, angled adapter for ergonomic viewing and more...



bon slit lamps - The right choice!



model	SL-E	SL-85	SL-75	SL-75 elite	DigiPro3 ^{HD} elite	DigiPro3 ^{HD} 75	DigiPro3 ^{HD} 85
type	Z-type	Z-type	H-type	H-type	H-type	H-type	Z-type
product code	0512003	0512013	0512056	0512054	0512157	0512158	0512103
illumination	high-power LED						
paintwork	bon white (similar to RAL 9010)			hammer finish blue		bon white	
mechanics	standard		low-friction mechanics		standard		
optical system	Grenough		Galilei				
magnifications	10x and 16x		6x, 10x, 16x, 25x, 40x				
stereo angle	11°		13°				
integral yellow filter	no		yes				
integral beam splitter with digital hi-end camera chip	no (not upgradeable)		no (can be retrofitted)		yes		
background illumination, auto-R/L recognition, joystick with trigger	no		yes				