

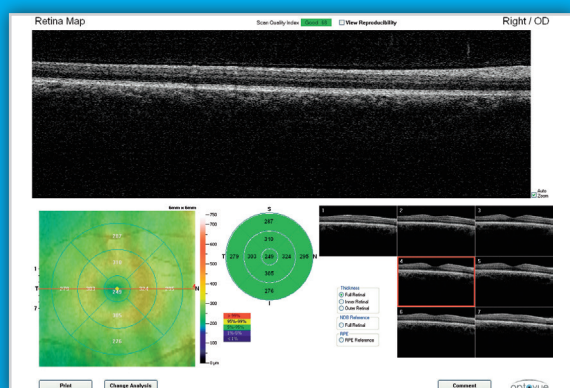
iScan™ OCT



Simplicity in Operation

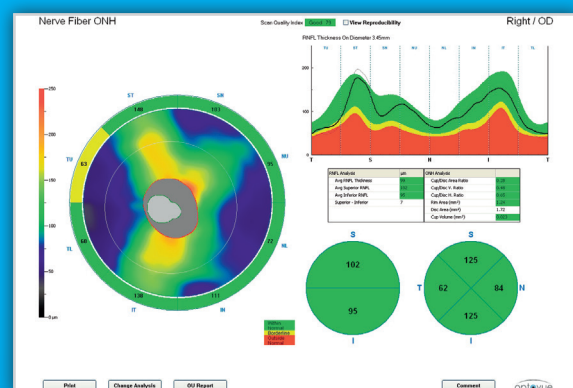
Elevating Eye Health Care  
With the Touch of a Button

optovue



## RETINA

- Retina mapping with normative comparison
- Retina change analysis
- 3D Cube



## NERVE FIBER

- Ganglion Cell Complex thickness mapping
- Optic nerve head and GCC combination report with normative comparison
- RNFL and optic disc trend analysis

# Introducing **iScan**<sup>TM</sup>

Software-Assisted OCT

## OCT Made Easy

1. Enter the patient's information
2. Properly position the patient
3. Touch to start

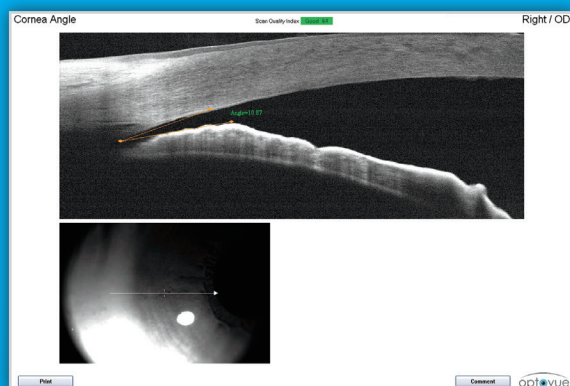
*iScan vocally guides the patient through the entire scan.\**

\*Operator can assist by using the touchscreen or assume full control in a non-compliant patient

## Powerful. Compact. Portable.

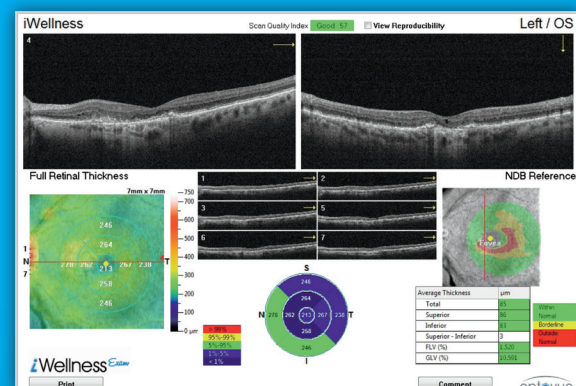
iScan includes a full suite of retina, optic nerve and anterior segment scans with normative database comparison.

And iScan has a small footprint and portable design making it ideal for a range of clinical settings.



### ANTERIOR SEGMENT

- Pachymetry mapping with minimum thickness indicator
- Angle visualization and measurement



### iWellnessExam (Optional)

- Single scan to aid in early detection of pathology
- Report combines retinal thickness and GCC thickness with normative comparison



# Meet iScan

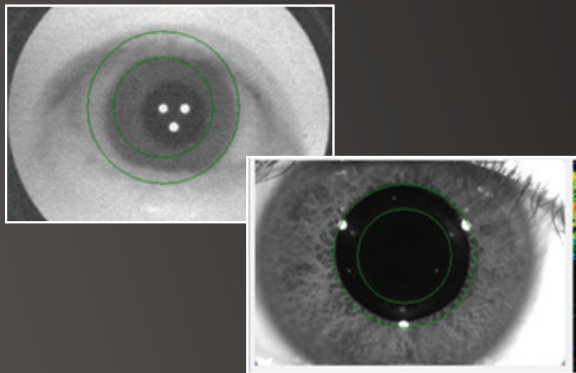
## Hardware Design



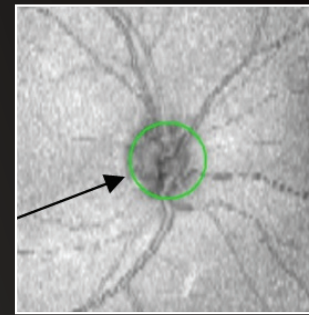
## Innovative Software

### Software-Assisted Anatomy Detection

Eye detection and focus

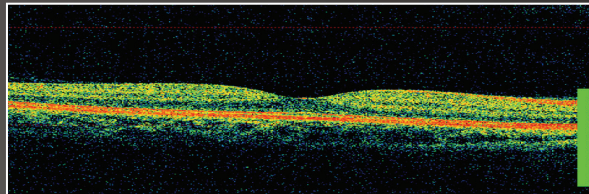


Optic Nerve Detection

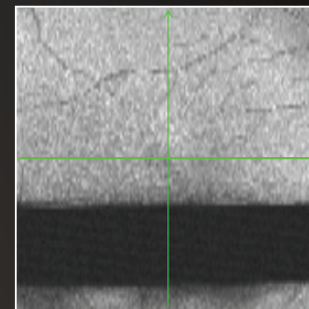


### Software-Assisted Quality Analysis

Signal Optimization



Data Quality



OPTOVUE, INCORPORATED  
2800 BAYVIEW DRIVE, FREMONT, CA 94538  
PH: +1 510.623.8868 | FX: +1 510.623.8668  
WWW.OPTOVUE.COM

300-49795 REV A INTERNATIONAL