

GE Healthcare

LOGIQ P3

Advancing your imaging capabilities



Clear imaging to help inform diagnosis.

The LOGIQ® P3 incorporates the innovative technologies that have made GE Healthcare a trusted partner of healthcare practitioners worldwide. Enabling deep penetration, high resolution and great color sensitivity, these technologies result in excellent imaging and enable you to make a confident diagnosis.

Imaging that thrives on innovation.

GE's TruScan™ architecture provides exceptional ultrasound performance. Its raw-data-based processing allows images to be viewed, measured, optimized and analyzed offline, from the cine loop memory and from stored exams, without losing any of the original image quality.

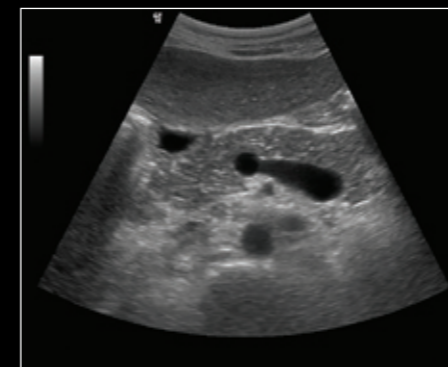
It enables a virtual re-scan after the patient has left, or on exams stored a long time ago, through its ability to allow manipulation, adjustment and measurement of stored images.

Advanced features and tools enable informed decision making

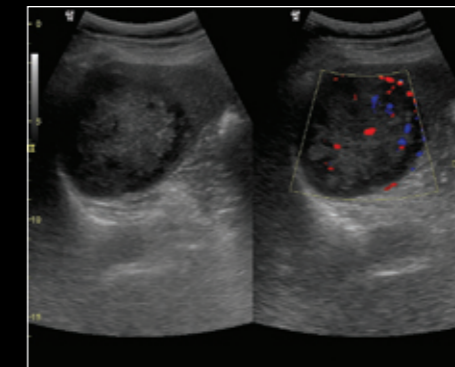
The LOGIQ P3 comes with a host of automated tools and a wide range of probes that enable the system to be utilized in applications as diverse as abdomen, gynecology, obstetrics, cardiology, vascular, small parts, urology, pediatrics and intra-operative. Advanced technologies and features enable you to make a confident diagnoses even in complicated scanning situations.

- **CrossXBeam™** – Image acquisition from different angles are combined into a single image in real time resulting in increased border definition, improved tissue differentiation, enhanced contrast resolution.*
- **Phase Inversion Harmonics** – for high spatial resolution and deep penetration.
- **Speckle Reduction Imaging (SRI)** – enables you to see clearly by suppressing speckle where it obscures underlying anatomy and helps in border delineation where there are small differences in echogenicity. May be helpful in identifying subtle lesions.
- **LOGIQview** – extended field of view to image large organs, usually not seen in a single image.

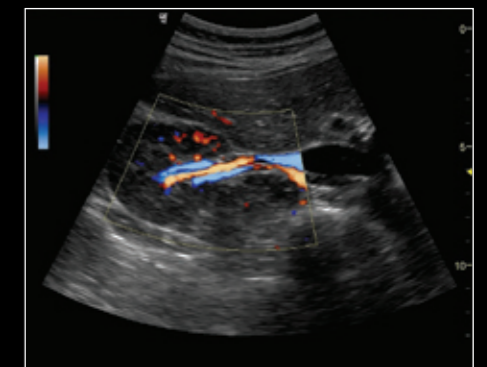
* Comparison of referenced GEHC Ultrasound features versus GE Conventional Ultrasound



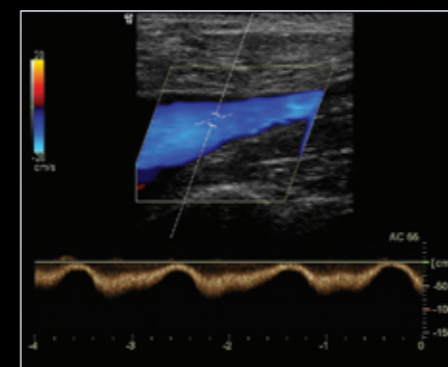
Head, neck and body of the pancreas with enlarged splenic vein - 4C probe



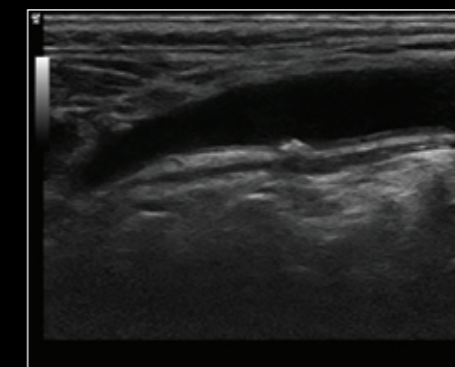
A case of splenic hemangioma showing good vascularity - 4C probe



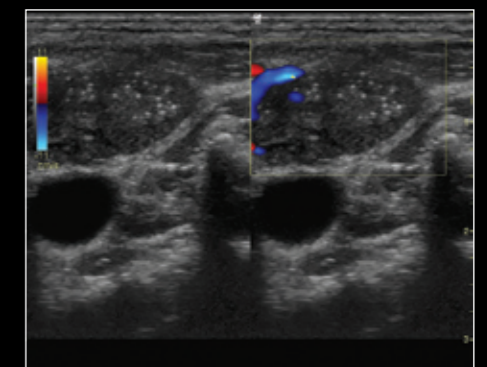
Power Doppler of the renal artery and vein



Lower extremity venous Doppler image - 7.5LA probe



Carotid plaque - 11L probe



Matted and calcified lymph nodes seen in a case of thyroid carcinoma - 11L probe

Smart workflow. Do more.

LOGIQ P3 delivers quality ultrasound which is critical in obstetric and gynecological examinations. It supports your busy practice and departments with a smart workflow that helps you to concentrate on the patient.

Keeping mobility in mind, the system is compact and sleek to help ensure it can be moved to any clinical location in an emergency. Quick-boot option help ensure rapid response during an emergency.



Ergonomics and advanced tools enable improved workflow

The LOGIQ P3 is designed for simplicity and ease of use.

- User-friendly keyboard and controls to help improve patient throughput
- High-resolution monitor with wide viewing angle and swivel function for easy viewing
- **Easy 3D** and **Advanced 3D** enable the clinician to see organ positioning relative to surrounding anatomy
- **Auto optimization** for B-mode, Color and spectral Doppler to obtain a quality image with a single touch. No need to waste precious scan time for optimizing numerous image settings
- **Auto TGC** provides image uniformity with a touch of a button

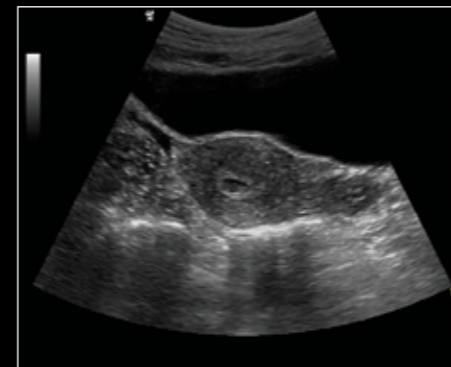
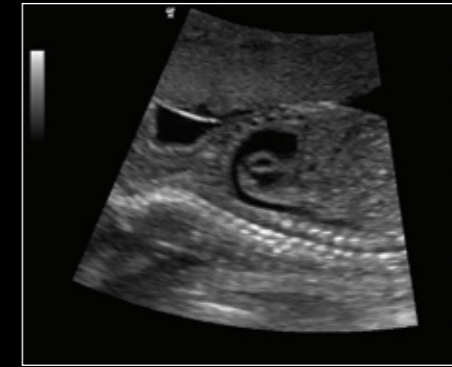
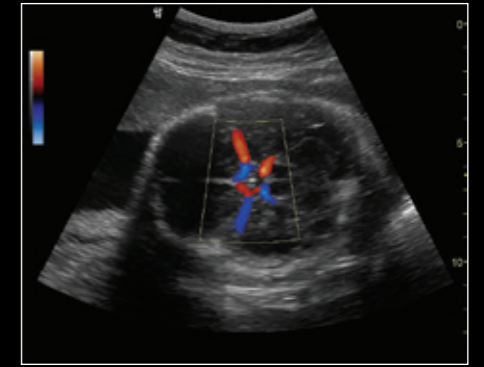


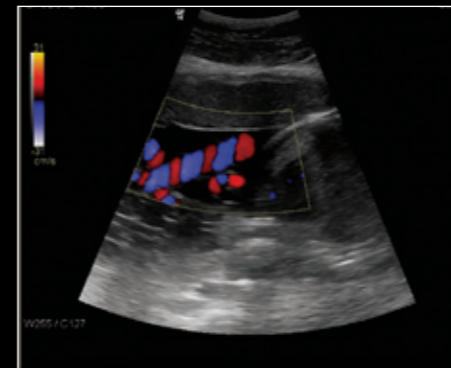
Image of the uterus showing an early gestational sac



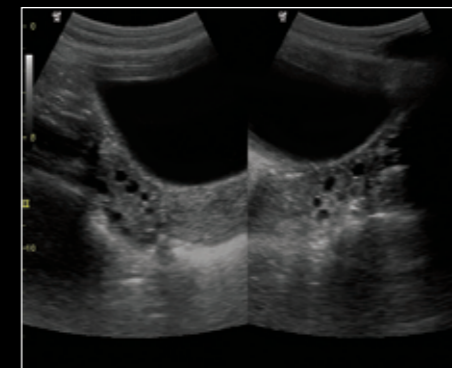
Fetal image showing the arch and descending aorta showing good tissue differentiation in various fetal organs



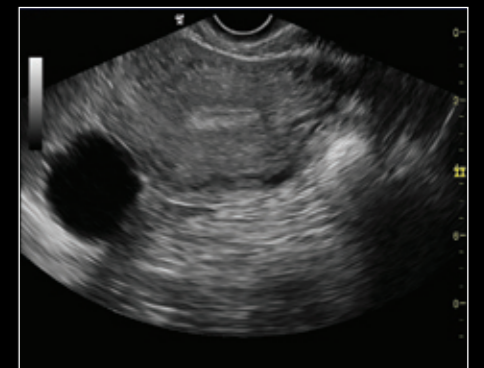
Circle of Willis in the fetal brain



3 vessel cord seen in the color flow mode



A classic case of bilateral polycystic ovarian disease showing peripherally arranged follicles and decreased ovarian tissue



Transverse section of the uterus with ovarian cyst

Advanced tools for cardiac care.

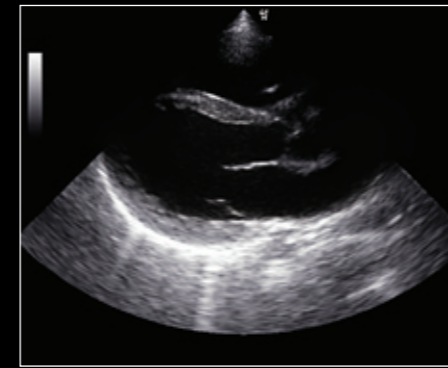
Advanced technologies and quantitative tools to help you achieve effective cardiac imaging

- **Anatomical M mode** - Adjustable M cursor positioning allows angle corrections for accurate measurements on both frozen and live images
- **Stress Echo** - Comprehensive package to help in the detection of coronary artery disease. It supports customizable templates, image acquisition with longer continuous buffer time, wall motion scoring and reporting with bull's eye and segmental views for a comprehensive stress echo testing
- **Tissue Doppler Imaging** - Doppler Imaging to quantify low-velocity myocardial motion
- **Speciality Probes** - 3S adult cardiac probe and 6S pediatric probe

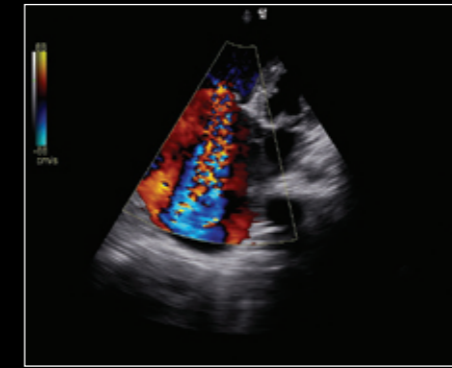
Maximize efficiency with innovative data management

Keeping in mind the importance of data captured by the system, the LOGIQ P3 incorporates a host of features aimed at facilitating and enhancing both data storage and management.

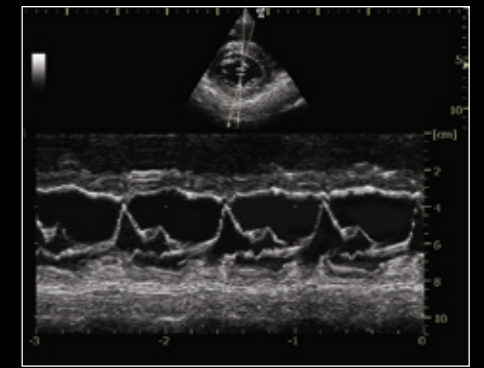
- **QuickSave** - Store image data to memory stick or USB/HDD
- **Batch Save** - Batch transfer of selected images to USB/CD/DVD
- **MPEGView** - Transfer images and cine loops in batches
Embedded viewer added to finalized CD
- **Onboard reporting** - DICOM structured reporting
Customize reports templates
- **Remote Service** - Insite II connectivity



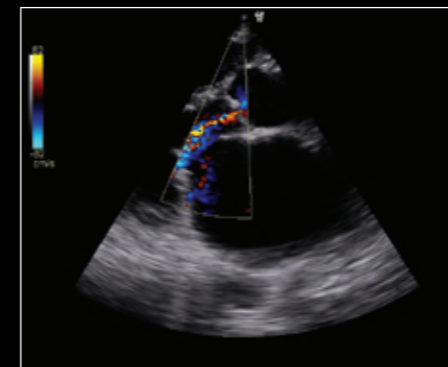
Parasternal Long Axis - 6S probe



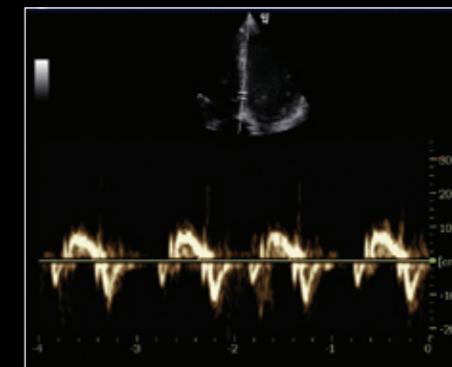
Tricuspid regurgitation seen with the 3S probe in a case of rheumatic heart disease



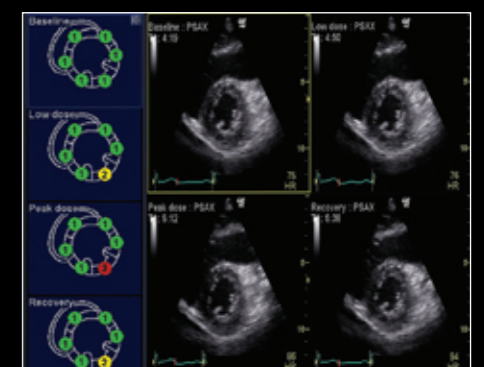
M-mode representation of the mitral valve - 3S probe



Aortic regurgitation - 3S probe



Tissue Doppler image - 3S probe



Stress echo feature is available as an option for advanced cardiac users

© 2011 General Electric Company - All rights reserved.

GE Medical Systems Ultrasound & Primary Care Diagnostics, LLC, a General Electric company, doing business as GE Healthcare.

General Electric Company reserves the right to make changes in specifications and features shown herein, or discontinue the product described at any time without notice or obligation. Contact your GE representative for the most current information.

GE, GE Monogram, LOGIQ, CrossXBeam, TruScan, LOGIQview and InSite are trademarks of General Electric Company.

DICOM is a registered trademark of the National Electrical Manufacturers Association for its standards publications relating to digital communications of medical information.

Not all features or specifications described in this document may be available in all probes and/or modes.

About GE Healthcare

GE Healthcare provides transformational medical technologies and services that are shaping a new age of patient care. Our broad expertise in medical imaging and information technologies, medical diagnostics, patient monitoring systems, drug discovery, biopharmaceutical manufacturing technologies, performance improvement and performance solutions services help our customers to deliver better care to more people around the world at a lower cost. In addition, we partner with healthcare leaders, striving to leverage the global policy change necessary to implement a successful shift to sustainable healthcare systems.

Our “healthymagination” vision for the future invites the world to join us on our journey as we continuously develop innovations focused on reducing costs, increasing access and improving quality around the world. Headquartered in the United Kingdom, GE Healthcare is a unit of General Electric Company (NYSE: GE). Worldwide, GE Healthcare employees are committed to serving healthcare professionals and their patients in more than 100 countries. For more information about GE Healthcare, visit our website at www.gehealthcare.com.

GE Healthcare
9900 Innovation Drive
Wauwatosa, WI 53226
U.S.A.

www.gehealthcare.com



imagination at work