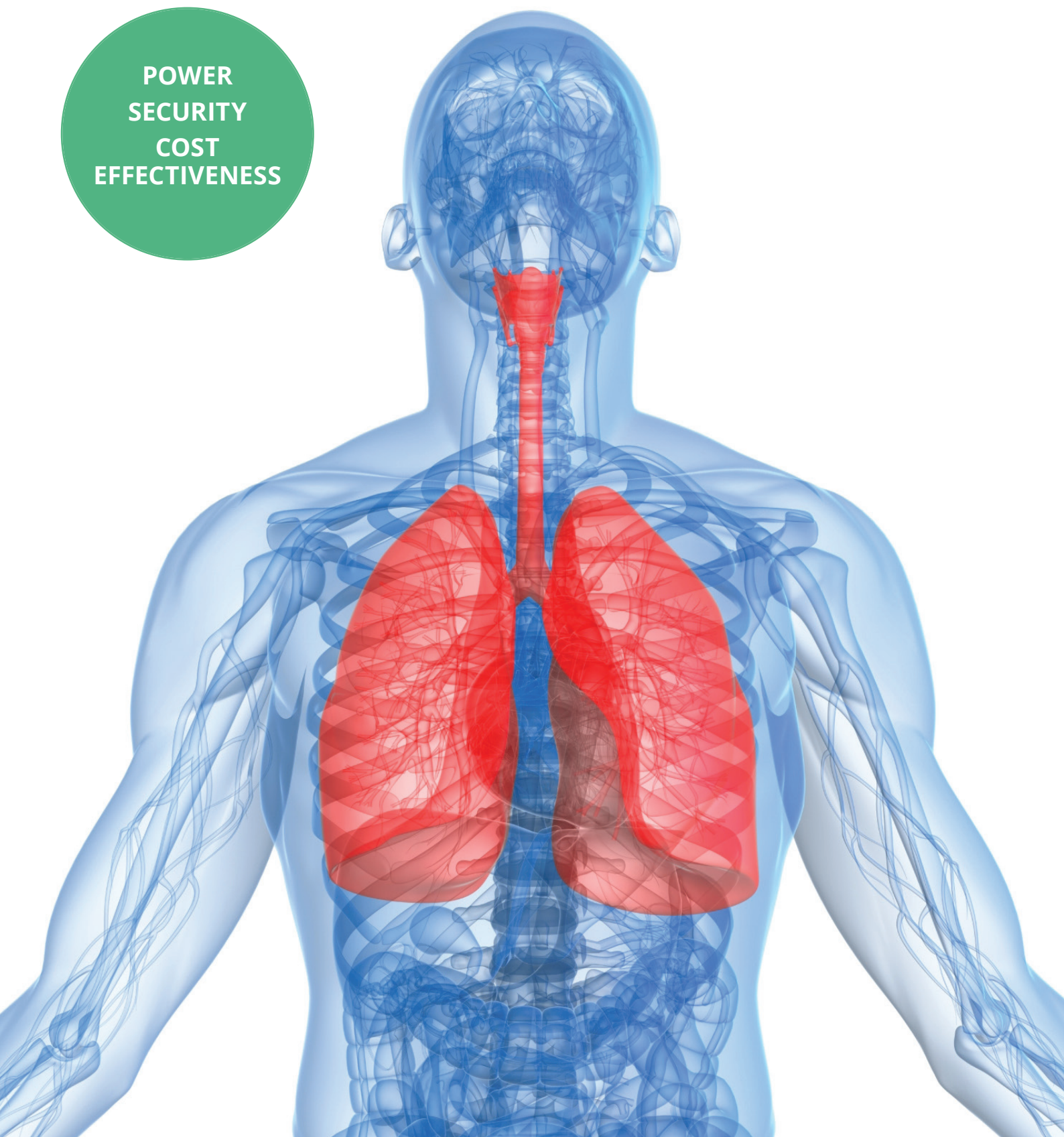


ATMOS®

Respiratory tract suction

POWER
SECURITY
COST
EFFECTIVENESS



Why ATMOS respiratory tract suction systems?

If a person cannot cough up secretion due to his illness then respiratory tract suction is required. Consequently ATMOS suction devices are a constant companion for patients who are dependent on a respiratory suction due to their illness.

The principle of any suction is that negative pressure is created in the suction device. Thereby gaseous, liquid and solid substances are sucked into the opening of the suction instrument. These flow through the hose system until they reach the collection canister where they are collected. The frequency of the suction depends on the individual needs, according to the principle "as often as necessary, as little as possible".

Field of application

- Secretion suction following laryngectomy
- Secretion suction following tracheotomy
- Secretion suction for illnesses with increased saliva production
- Suction due to respiratory harm following tumour radiation
- Suction due to increased secretion production following an operation
- Paediatric bronchial suction
- Anaesthesia suction during operations
- Secretion suction for continuous respiration on the intensive care ward
- Secretion suction for patients with dysphagia, following a stroke
- Geriatric oral hygiene

Types of suction

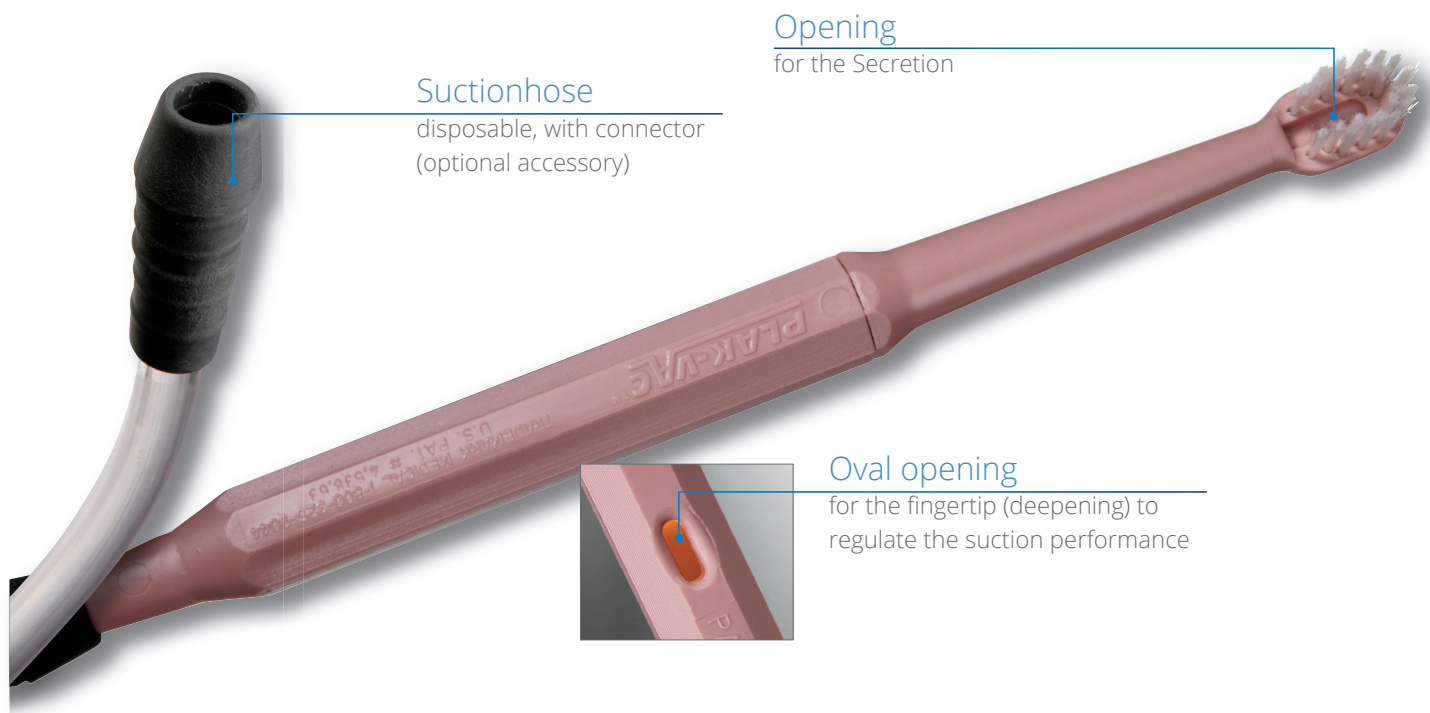
- Oral suction
Suction of respiratory secretion from the oral cavity.
- Transnasal suction
Suction of respiratory secretion through the nose. This method is particularly suitable for the suction of secretion from the pharyngeal zone.
- Endotracheal suction
Suction of respiratory secretion from the trachea. As a general rule a tube or a tracheal cannula is used.

Information brochures

Further information and recommendation for the care of tracheotomised patients can be found in the booklet "ATMOS respiratory tract suction", downloaded or ordered from ATMOS.



Are you worried about the safety of your patients during oral hygiene? – ATMOS Plak-Vac™



With coma vigil and bedridden patients it is always a risk to perform oral hygiene. Any choking of the patient must be prevented. Furthermore it is essential that the rinsing solution is extracted from the patient's mouth.

In former times only a simple toothbrush was available but today - thanks to technical progress - many accessories are at hand. ATMOS has the solution for the above mentioned problems: the Plak- Vac™ toothbrush with its suction mechanism and reuseable brushes. It makes oral hygiene easier and the thorough cleaning enhances the general wellbeing of the patient. With the regular use patients feel a positive stimulation.

The use:

The Plak-Vac™ toothbrush is simply connected to the hose of the suction system. This means that regular use significantly reduces infections, bad breath and the danger of aspiration. The suction performance can be controlled. The secretion is extracted by suction and transported directly into the secretion canister of the suction device.

The C class

Our respiratory tract suction device to meet your needs!

- Blue translucent cover protects the control elements underneath from external influences and contamination
- Easy to clean due to large surfaces
- Infinitely variable vacuum and precise indication
- Condensate trap for quick visual inspection whether device is oversucked and therefore a favourably priced reprocessing



ATMOS® Direct-Docking-System

With the introduction of the Direct-Docking-System DDS in the lower price category ATMOS presents a new generation of portable respiratory tract suction systems. Up to now there was uncertainty when dealing with the hoses – now that has come to an end: With the innovative ATMOS DDS the hose connection between the suction system and the secretion jar is no longer required: no hose, no problem – just dock! This procedure guarantees a costeffective processing because malfunction is excluded.

With the unique features like DDS, ergonomics, design and price ATMOS introduces a whole new standard of respiratory tract suction systems.



- Modern filter technology
- Integrated overflow protection
- Modern Direct Docking System (DDS)



The A class Our favourably priced solution for you!

- Three step control :
Low: -25 kPa
Medium: -55 kPa
High: -75 kPa
- Easy to clean due to large surfaces



ATMOS® suction systems with disposable canisters:

Receptal®



Serres®



MediVac®



Mobile or mains operated — ATMOS® respiratory tract suction devices for every application



ATMOS® Battery suction devices — battery-operated:

- Suction performance: 22 ± 2 l/min
- Battery operation 12 V DC, 40 min. battery operation time
- Charging time 1,5 h
- 5 step LED battery level indication

ATMOS® Aspirator suction devices — mains-operated

- Suction performance either 16 ± 2 l/min or 26 ± 2 l/min



Cleaning and care



General information

- the suction device may be solely used by one patient.
- A daily visual inspection of the device is essential.
- Always operate the suction device in accordance with the operating instructions.
- Only use disinfectant solutions recommended by ATMOS. (see operating instructions).
- Before cleaning the device, make sure the power supply is interrupted (unplug the device!).



Secretion canister and Secretion canister lid

Please empty the secretion canister after each use, rinse it thoroughly with warm water and clean it with washing up liquid. Tenacious contaminations can be removed with a clean brush. ATMOS recommends daily disinfection!



External casing

After each use, wipe the external casing with a clean damp cloth. We recommend disinfection of the external casing at least once a week.



Bacterial filter

The bacterial filter prevents bacteria and liquids from seeping into the device. Therefore, make sure the device is only operated with an original ATMOS bacterial filter! Exchange the bacterial filter at least once a week. Immediate change is necessary if it becomes wet or dirty or when the device is used for another patient.



Suction hose

The suction hose must be rinsed at least once a day with one of the recommended disinfection liquids. In addition the hose must be rinsed thoroughly with clear water after each suction process. With frequent use the hoses may become discoloured and porous therefore ATMOS recommends changing them every 4 weeks.

If you follow these recommendations an ATMOS suction device will remain a reliable and hygienically impeccable aid for ambulant, stationary and home care for many years.

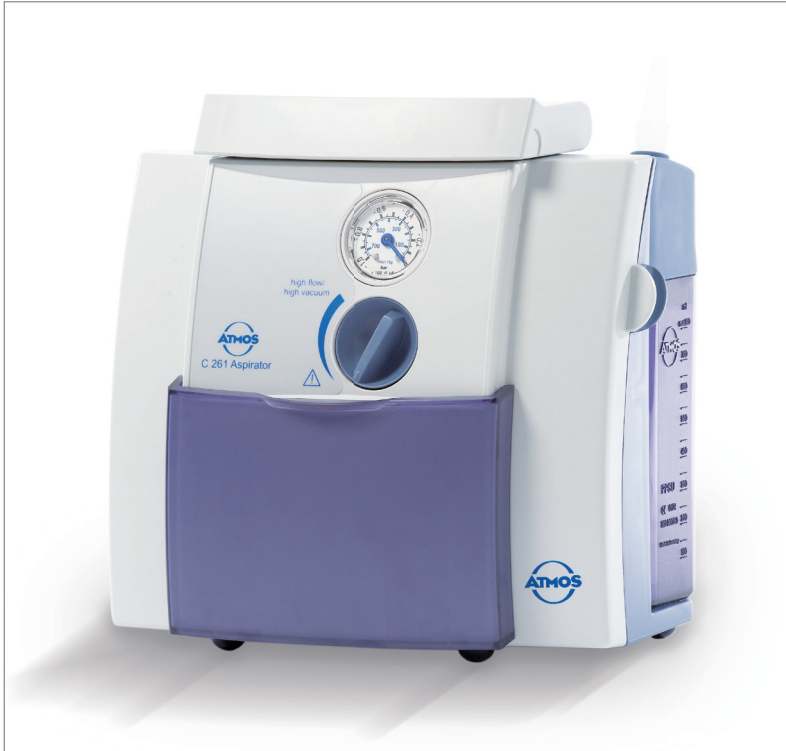
Mains-operated respiratory tract suction devices, 26 ± 2 l/min

Below you will find the order data of our products.

If you have any further questions do not hesitate to contact our sales department

Phone: +49 7653 689-374

ATMOS® C 261 Aspirator / DDS	REF
<p>Portable secretion suction device, airflow rate of pump: 26 ± 2 l/min. No special voltage available Characteristics: Infinitely variable vacuum adjustment and precision indication, condensate trap, grad. ATMOS - secretion canister 1 l, lid for secretion canister with triple oversuction safety by modern filter technology, integrated Direct-Docking-System. Included in delivery: Silicone suction hose \varnothing 6 mm, L = 1.3 m, mains cable, 3 bacterial filters, hose connector, DDS canister, DDS canister lid, holding clamp, operating instructions</p>	313.0100.0
[2] ATMOS® C 261 Aspirator / Receptal® 1,5 l	313.0165.0
[3] ATMOS® C 261 Aspirator / Medi-Vac®	313.0102.0
[4] ATMOS® C 261 Aspirator / Serres®	313.0103.0
ATMOS® A 261 Aspirator / DDS	REF
<p>Portable secretion suction device, airflow rate: 26 ± 2 l/min. No special voltage available Characteristics: Threestep vacuum adjustment (-25 kPa, -55 kPa, -75 kPa) without precision indication and condensate trap, grad. ATMOS secret canister 1 l, canister lid, with triple oversuction safety by modern filter technology, integrated overflow protection and Direct-Docking-System. Included in delivery: Silicone suction hose \varnothing 6 mm, L = 1,3 m, mains cable, 2 bacterial filter, hose connector, DDS canister, DDS canister lid, operating instructions</p>	313.0300.0
ATMOS® A 261 Aspirator / Receptal® 1,5 l	313.0365.0
ATMOS® A 261 Aspirator / Medi-Vac®	313.0302.0
ATMOS® A 261 Aspirator/ Serres®	313.0303.0



1 REF 313.0100.0



5 REF 313.0300.0



2 REF 313.0165.0



3 REF 313.0102.0



4 REF 313.0103.0

Mains-operated respiratory tract suction devices, 16 ± 2 l/min

Below you will find the order data of our products.

If you have any further questions do not hesitate to contact our sales department

Phone: +49 7653 689-374

ATMOS® C 161 Aspirator / DDS		REF
<p>Portable secretion suction device, airflow rate of pump: 16 ± 2 l/min No special voltage available Characteristics: Infinitely variable vacuum adjustment and precision indication, condensate trap, grad. ATMOS - secretion canister 1 l,</p> <p>[1] canister lid with triple oversuction safety by modern filter technology, integrated overflow protection and Direct-Docking-System. Included in delivery: Silicone suction hose \varnothing 6 mm, L = 1.3 m, mains cable, 3 bacterial filters, hose connector, DDS canister, DDS canister lid, holding clamp, operating instructions</p>		313.0000.0
[2] ATMOS® C 161 Aspirator / Receptal® 1,5 l		313.0065.0
[3] ATMOS® C 161 Aspirator / Medi-Vac®		313.0002.0
[4] ATMOS® C 161 Aspirator / Serres®		313.0004.0
ATMOS® A 161 Aspirator / DDS		REF
<p>Portable secretion suction device, airflow rate: 16 ± 2 l/min. No special voltage available Characteristics: Threestep vacuum adjustment (-25 kPa, -55 kPa, -75 kPa) without precision indication and condensate trap, grad. ATMOS secret canister 1 l, canister lid, with triple oversuction safety by modern filter technology, integrated overflow protection and Direct-Docking-Station.</p> <p>[5] Included in delivery: Silicone suction hose \varnothing 6 mm, L = 1.3 m, mains cable, 2 bacterial filter, hose connector, DDS canister, DDS canister lid, operating instructions</p>		313.0200.0
ATMOS® A 161 Aspirator / Receptal® 1,5 l		313.0265.0
ATMOS® A 161 Aspirator / Medi-Vac®		313.0202.0
ATMOS® A 161 Aspirator/ Serres®		313.0203.0



1 REF 313.0000.0



5 REF 313.0200.0



2 REF 313.0065.0



3 REF 313.0002.0



4 REF 313.0004.0

Battery-operated respiratory tract suction devices, 22 ± 2 l/min

Below you will find the order data of our products.

If you have any further questions do not hesitate to contact our sales department

Phone: +49 7653 689-374

ATMOS® C 161 Battery / DDS	REF
<p>Battery operated secretion suction device, airflow rate: 22 ± 2 l/min. No special voltage available Characteristics: Infinitely variable vacuum adjustment and precision indication, condensate trap, 5-step LED battery level indicator, lithium-ionic battery, graduated ATMOS secretion canister 1 l, canister lid,</p> <p>[1] with triple oversuction safety by modern filter technology, integrated overflow protection and Direct-Docking-System. Included in delivery: Silicone suction hose \varnothing 6 mm, L = 1.3 m, mains cable, 3 bacterial filters, hose connector, DDS canister, charging cable for 100 - 240 V~, 50/60 Hz, DDS canister lid, hose connector, holding clamp, operating instructions</p>	313.0400.0
[2] ATMOS® C 161 Battery / Receptal® 1,5 l	313.0465.0
[3] ATMOS® C 161 Battery / Medi-Vac®	313.0402.0
[4] ATMOS® C 161 Battery / Serres®	313.0403.0
ATMOS® A 161 Battery / DDS	REF
<p>Battery operated secretion suction device, airflow rate: 22 ± 2 l/min. No special voltage available Characteristics: Threestep vacuum adjustment (-25 kPa, -55 kPa, -75 kPa) without precision indication and condensate trap, 5-step LED battery level indicator, lithium-ionic battery, grad. ATMOS secret canister 1 l,</p> <p>[5] canister lid, with triple oversuction safety by modern filter technology, integrated overflow protection and Direct-Docking-System. Included in delivery: Silicone suction hose \varnothing 6 mm, L = 1.3 m, mains cable, charging cable for 100 - 240 V~, 50/60 Hz, 3 bacterial filters, DDS canister, DDS canister lid, hose connector, holding clamp, operating instructions</p>	313.0500.0
ATMOS® A 161 Battery / Receptal® 1,5 l	313.0565.0
ATMOS® A 161 Battery / Medi-Vac®	313.0502.0
ATMOS® A 161 Battery / Serres®	313.0503.0



1 REF 313.0400.0



2 REF 313.0465.0



3 REF 313.0402.0



5 REF 313.0500.0



4 REF 313.0403.0

Accessories

Below you will find the order data of our products.

If you have any further questions do not hesitate to contact our sales department

Phone: +49 7653 689-374

Accessories	REF
<div>1</div> Grad. secretion canister, 1 l DDS, blue, PSU Secretion canister for ATMOS A- and C- class DDS	313.0015.0
<div>2</div> Grad. secretion canister, 1 l DDS, transparent, PSU Secretion canister for ATMOS A- and C- class DDS	313.0017.0
<div>3</div> Secretion canister lid, 1 l DDS, blue, with spare bacterial filter for ATMOS A- and C- class DDS	313.0006.0
<div>4</div> Separate rinsing canister set for A- and C- class incl. lid and support	313.0008.0
<div>5</div> Hose connector for hoses Ø 6 mm	000.0836.0
<div>6</div> Hose rewind for suction hoses A- and C- class	313.0007.0
<div>7</div> Charger for ATMOS devices	011.1334.0
<div>8</div> 2 pole mains cable, L = 1,5 m	008.0920.0
<div>9</div> Carrying bag, black with practical storage pockets for consumables	313.0011.0
<div>10</div> Car power cable for ATMOS C 161 Battery, connection: 12 V-	313.0436.0
<div>11</div> Device support for ATMOS A- and C- class with rotatable holder for attaching the unit to standard rail, to a stand, patient's bed and wheelchair etc.	313.0012.0
<div>12</div> Trolley on 4 castors, for A- and C- class dove blue, dimensions (H x W x D): 580 x 425 x 400 mm, self assembly	320.0070.2



1 REF 313.0015.0



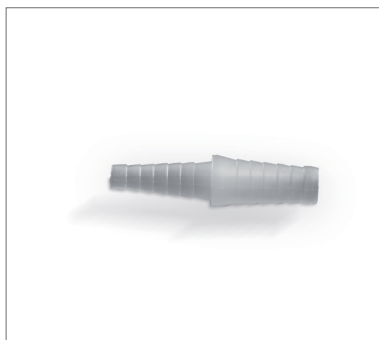
2 REF 313.0017.0



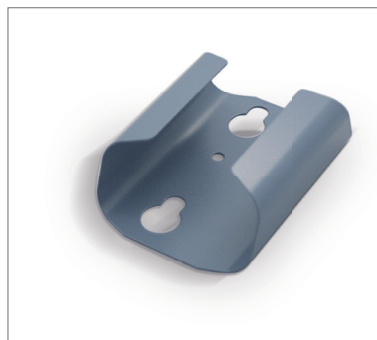
3 REF 313.0006.0



4 REF 313.0008.0



5 REF 000.0836.0



6 REF 313.0007.0



7 REF 011.1334.0



8 REF 008.0920.0



9 REF 313.0011.0



10 REF 313.0436.0



11 REF 313.0012.0



12 REF 320.0070.2

Accessories

Below you will find the order data of our products.

If you have any further questions do not hesitate to contact our sales department

Phone: +49 7653 689-374

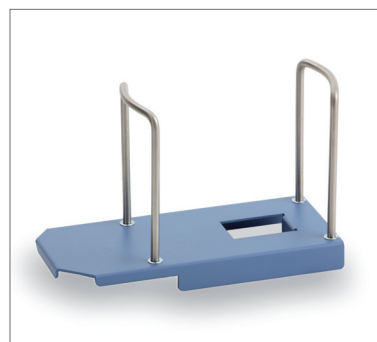
General accessories	REF
1 Basket for catheters, L = 340 mm	444.0140.0
2 Basket with standard rail holder Dimensions: (H x W x D): 340 x 127 x 178 mm	320.0075.0
Receptal®	REF
3 Support for Receptal® external canister 1 l and 1.5 l	313.0009.0
4 Receptal®-canister 1,5 l	310.0221.0
5 Receptal® suction bag 1.5 l, with integrated overflow protection Not autoclavable, 50 pcs., change: 1 x per patient	310.0222.2
Serres®	REF
6 Support for Serres® external canister 1 l	313.0413.0
7 Serres® external canister 1 l	312.0465.0
8 Serres® suction bag, 1 l, not autoclavable, 36 pcs. with angled connection	312.0466.0
Medi-Vac®	REF
9 Support for Medi-Vac® external canister 1 l	313.0010.0
10 Medi-Vac® canister 1 l	312.0473.0
11 Medi-Vac® suction bag 1 l, not autoclavable, 50 pcs.	312.0474.0
Refitting set Medi-Vac® 1 l for ATMOS respiratory suction devices 12 Included in delivery: Medi-Vac® external canister 1 l Support for Medi-Vac® external canister 1 l	313.0570.0
Refitting set Serres® 1 l for ATMOS respiratory suction devices Included in delivery: Serres® external canister 1 l Support for Serres® external canister 1 l	313.0580.0



1 REF 444.0140.0



2 REF 320.0075.0



3 REF 313.0009.0



4 REF 310.0221.0



5 REF 310.0222.2



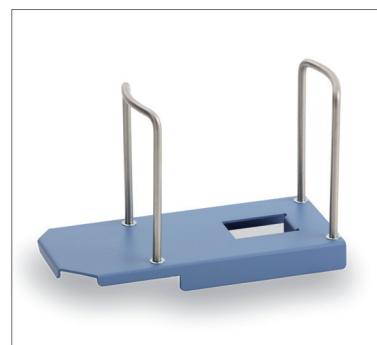
6 REF 313.0413.0



7 REF 312.0465.0



8 REF 312.0466.0



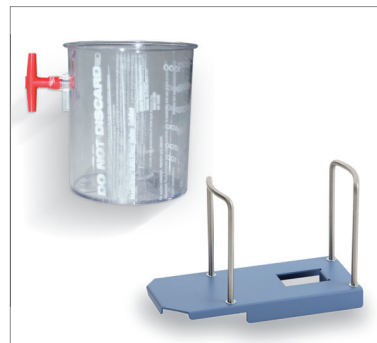
9 REF 313.0010.0



10 REF 312.0473.0



11 REF 312.0474.0



12 REF 313.0570.0

Consumables

Below you will find the order data of our products.

If you have any further questions do not hesitate to contact our sales department

Phone: +49 7653 689-374

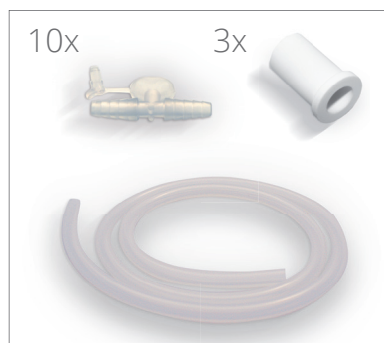
Consumables	REF
<p>Bacterial filter for DDS secretion canister, 10 pcs. disposable, not autoclavable,</p> <p>[1] For hygienic reasons a weekly exchange is recommended. In case of contamination or new patient the filter must immediately be replaced.</p>	340.0054.0
<p>[2] Plak-Vac™ tooth brush with suction mechanism not autoclavable, Change: 1 x per patient, with same patient: every 4 weeks, minimum purchase quantity: 5 pcs.</p>	000.0821.0
<p>[3] Set of consumables for ATMOS A- and C-class DDS silicone-suction hose Ø 6 mm, L = 1,3 m, 3 bacterial filters, 10 fingertips</p>	313.0160.0
<p>[4] Suction hose, silicone, Ø 6mm, minimum purchase 5 m temperature-resistant up to 200 °C</p>	006.0009.0
<p>[5] Suction hose, silicone, Ø 6 mm, L = 1.30 m, 1 pc. single packed, temperature-resistant up to 200 °C</p>	000.0013.0
<p>[6] Suction hose, PVC, disposable, Ø 6 mm, L = 1.30 m, 10 pcs. not autoclavable, with integrated device connector and fingertip, change: 1x per patient</p>	006.0057.0
<p>[7] Suction hose, PVC, single-packed, Ø 6 mm, L = 2.10 m, 50 pcs. change: 1 x per patient</p>	006.0059.0
<p>[8] Fingertip, sterile, not autoclavable, minimum purchase 10 pc.</p>	000.0347.0
Absaugkatheter	REF
<p>[9] Suction catheter Unomedical®, size: CH 12, L = 50 cm, 100 pcs. Ø 4 mm, white, straight, central opening, 2 small lateral openings, suction connection Ø 6 mm, sterile, not autoclavable</p>	000.0294.0
<p>[10] Suction catheter Unomedical®, size: CH 14, L = 50 cm, 100 pcs. Ø 4.7 mm, green, straight, central opening, 2 small lateral openings, suction connection Ø 6 mm, sterile, not autoclavable</p>	000.0295.0
<p>[11] Suction catheter Unomedical®, size: CH 16, L = 50 cm, 100 pcs. Ø 5.3 mm, orange, straight, central opening, 2 small lateral openings, suction connection Ø 6 mm, sterile, not autoclavable</p>	000.0296.0



1 REF 340.0054.0



2 REF 000.0821.0



3 REF 313.0160.0



4 REF 006.0009.0



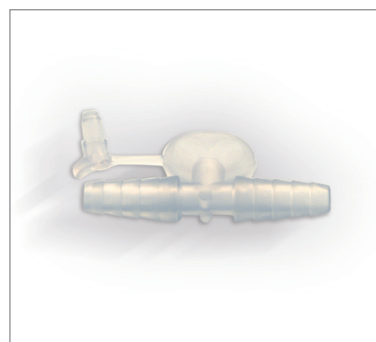
5 REF 000.0013.0



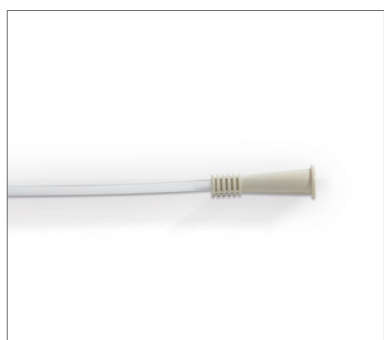
6 REF 006.0057.0



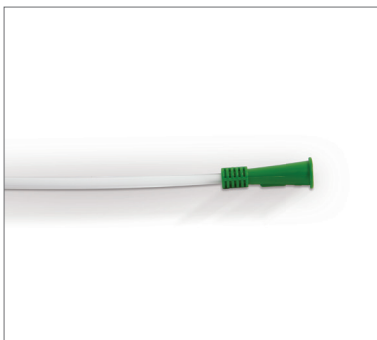
7 REF 006.0059.0



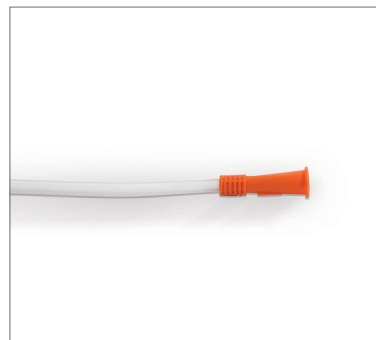
8 REF 000.0347.0



9 REF 000.0294.0



10 REF 000.0295.0



11 000.0296.0



MedizinTechnik

ATMOS MedizinTechnik GmbH & Co. KG

Ludwig-Kegel-Str. 16

79853 Lenzkirch

Tel: +49 7653 689-374

ApplicationSolutions@atmosmed.com

www.atmosmed.de