

Samsung Electronics Co., Ltd. inspires the world and shapes the future with transformative ideas and technologies, redefining the worlds of TVs, smartphones, wearable devices, tablets, cameras, digital appliances, printers, medical equipment, network systems, and semiconductor and LED solutions. We are also leading in the Internet of Things space through, among others, our Smart Home and Digital Health initiatives.

We employ 307,000 people across 84 countries with annual sales of US \$196 billion. To discover more, please visit our official website at www.samsung.com and our official blog at global.samsungtomorrow.com

CT-GF50 2.8-150610-EN

	GF50	GF50A
Tube	300kHU (210kJ)	150kHU (105kJ)
HVG(Generator)	52kW, 150kVp, 640mA	40kW, 125kVp, 500mA
Power connection	3-phase, 380/400/480VAC, 50/60Hz	Single phase, 220/230VAC, 50/60Hz
Table	6-way, 4-way	4-way
Wireless Detector	S4335-W, S4335-WV	
Option	AEC, DAP	

SAMSUNG

© 2015 Samsung Electronics All rights reserved.
 Samsung Electronics reserves the right to modify the design, packaging, specifications, and features shown herein, without prior notice or obligation.

Efficiency at Hand

Digital Radiography GF50 Series

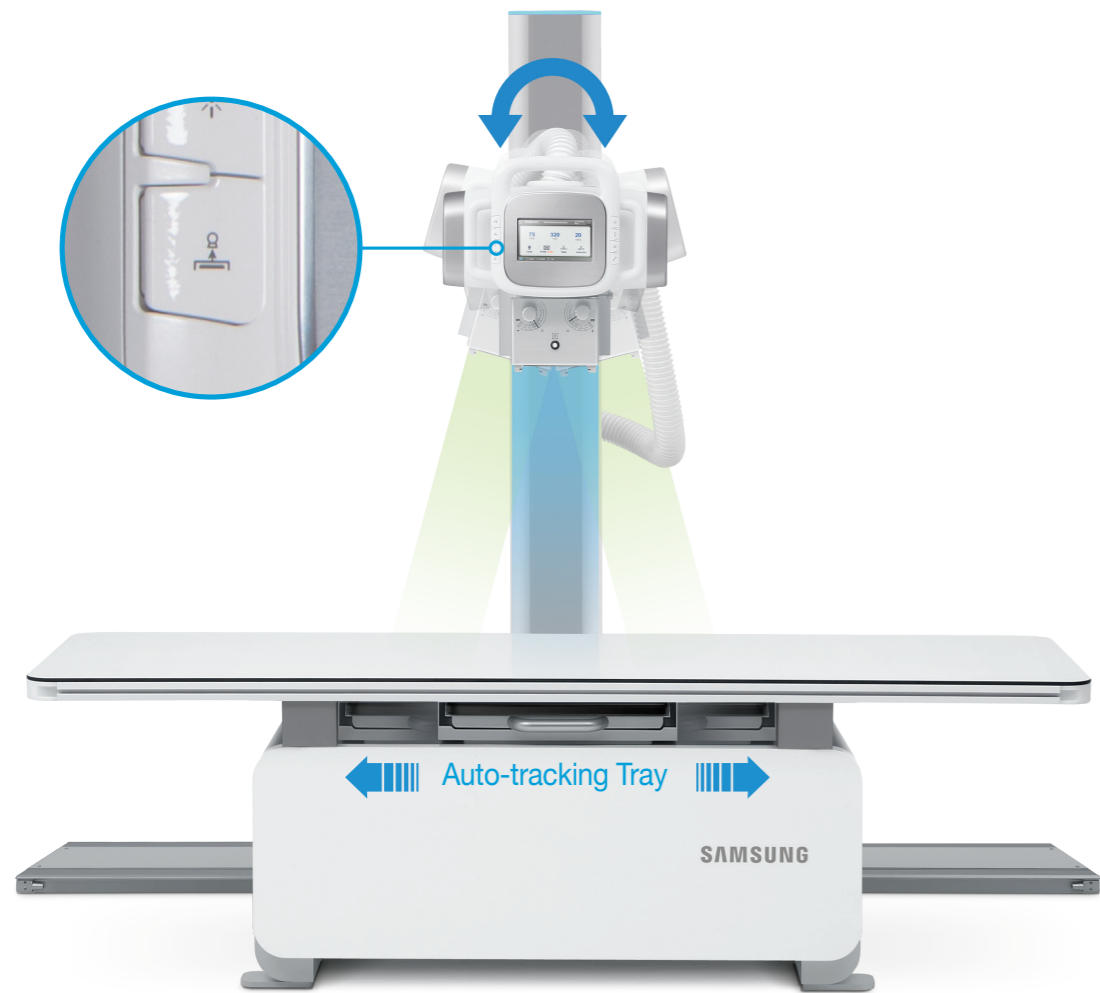
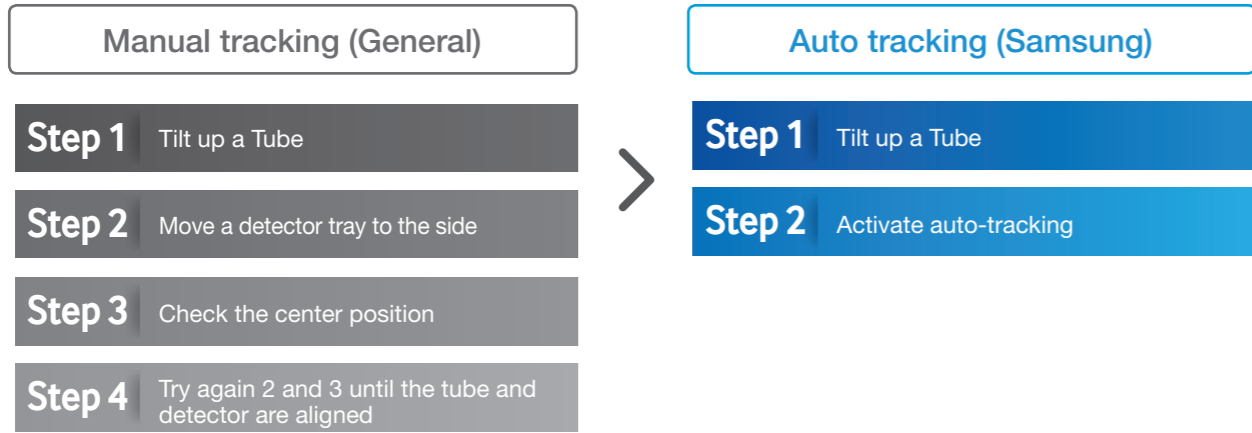


SAMSUNG

Experience enhanced workflow leading to high throughput

Easier operation with Auto-tracking

Automated operation such as Auto-tracking shortens the operation regardless of the patient's position. Auto-tracking function reduces workflow steps by half compared to the conventional manual tracking.



Patients' comfort and high throughput with lightweight wireless S-Detector

Mobility of wireless S-Detectors provides higher throughput, making the patients in the procedure more comfortable and convenient. As a result, the operator's effort is reduced, and a greater number of patients can be served.

Quick acquisition time

Preview and acquisition take less than 3 seconds, and full acquisition less than 10 seconds. It is easy to shoot multiple images after checking the preview image.



Experience precise diagnosis with excellent images

High-quality images with S-Vue

Samsung's next-generation S-Vue imaging engine delivers high-resolution images through advanced processing and adaptive filtering and provides enhanced image contrast and sharpness.

S-Vue provides:

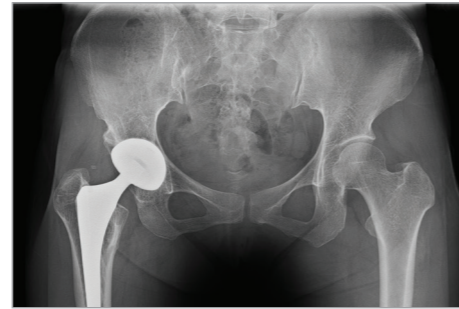
- Improved image sharpness and clarity

Thick and thin parts are clearly distinguished so that overlapping areas and contours are more sharply displayed.



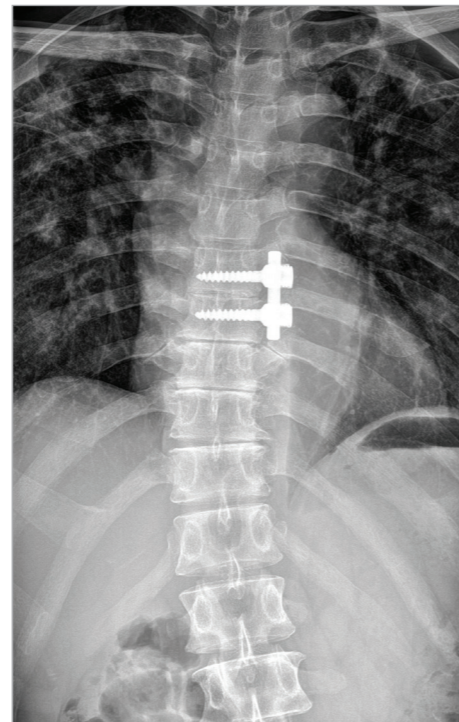
- Ensured image reliability

Even in the presence of an implant, regions of interest are displayed clearly and without artifacts. In the areas where bones overlap, each bone stands out clearly.



- Great depth and range of image

Highly clarified contrast of the regions of interest provides a clear and detailed display of bones and soft tissues in a single image. Images of patients' organs with different characteristics, such as lung, spine and inguinal region images, can be displayed in detail on a single page.



Results may vary depending on individual use.

Improved diagnostic capability with S-Detector

Newly developed S-Detector displays the patient's anatomical structure clearly with high Detective Quantum Efficiency (DQE). The efficiency of radiation and spatial resolution are improved compared to previous indirect type detectors, reducing radiation needed to ensure high image quality.

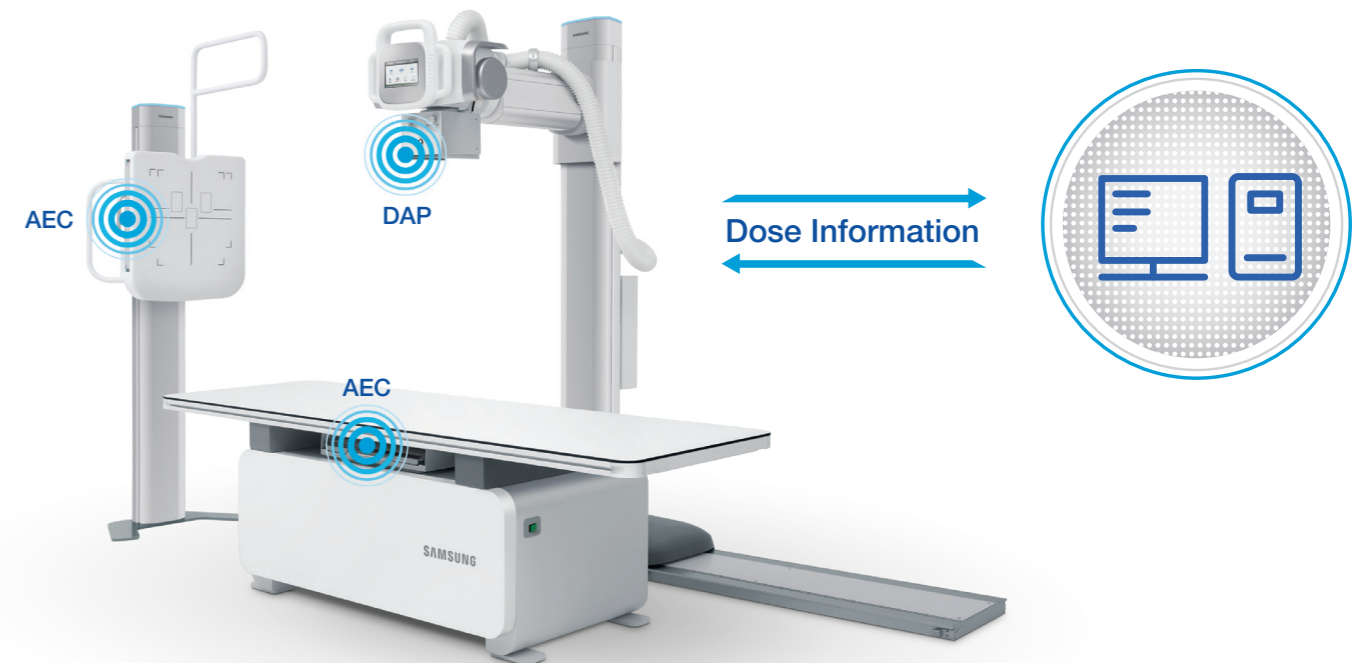


	S4335-W	S4335-WV
Detector type	CsI (Direct Deposition), Amorphous Silicon TFT	Gadox, Amorphous Silicon TFT
Effective area	43 cm x 35 cm (17 in x 14 in)	
Weight	Typ 3.1 kg	Typ 2.9 kg
Battery life	160 images during 4 hours (at 90sec/cycle)	

* It depends on air condition

Enhanced dose management

The GF50 series manages and lowers required radiation dose with several advanced functions. Dose Area Product(DAP) provides patient-level dose estimates and maximum recommended exposures. Relevant information is stored on the PACS, enabling cumulative patient dose tracking. Automatic Exposure Control(AEC) reduces excessive patients' radiation exposure.



Experience simplified operation with user-friendly solutions

Ergonomic design with foot sensor

The ergonomic design provides enhanced accessibility with 4-way or 6-way table movement for quick, accurate patient positioning. The range of longitudinal movement is $\pm 500\text{mm}$, and the range of transverse movement is $\pm 125\text{mm}$. The wide table enhances patient comfort, and users conveniently control the 4-way table-top by signaling to the foot sensor.



Intuitive user interface

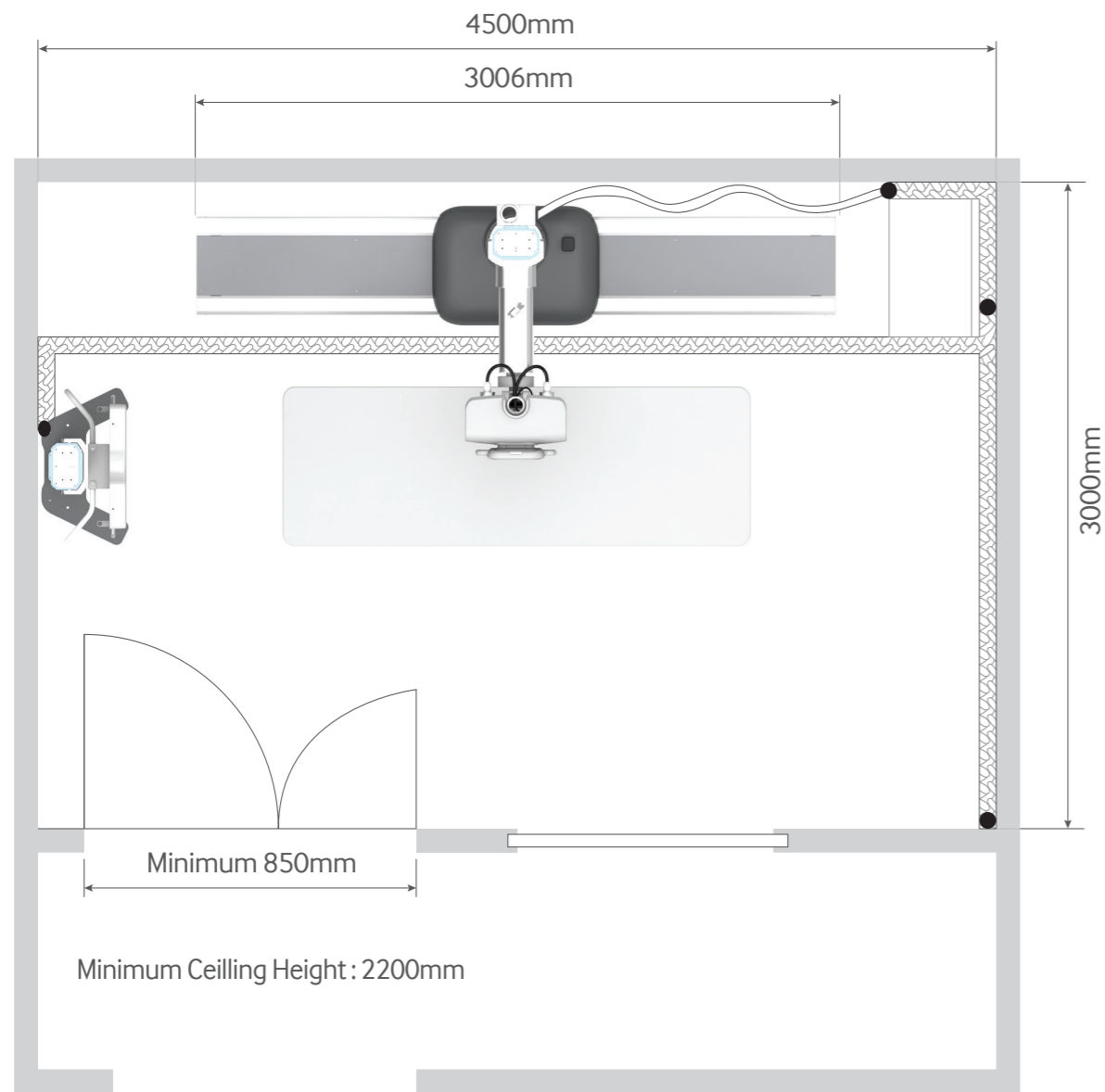
Intuitive interface of the workstation allows users to easily operate the system. The Anatomical Programmed Radiography (APR) selects the appropriate imaging method for the parts being imaged to ensure quick examinations, and hospitals can select the APR database according to their needs.



Experience efficient space-usage

Room consideration

Typical room layout



Product gallery

Compact design enables easy installation, even in tight spaces.



Reduce downtime, Enhance operations



Faster and always on

Samsung Service increases operational efficiency and throughput rate with fast, systematic service and advanced technical support. The service also supports clients' growth and business innovation by sharing best practices with service engineers in 207 countries worldwide. To accomplish this, Samsung Service continually develops and offers a variety of customer service programs, such as maintenance solutions and the S-Care service offering.

Value care services

Maintenance solution: 24/7, 365 days a year*

- ▶ **RMS (Remote Maintenance System)**
This system enables continuous monitoring of system errors, auto-diagnosis of the system and software version.
- ▶ **24/7 call center**
The customer support center operates 24/7, 365 days a year to quickly respond to clients' problems.
- ▶ **Upgrade service**
Samsung helps clients use the latest products through optional detector upgrades, along with hardware and software upgrades.
- ▶ **Service offering**
Samsung offers clients the flexibility to choose service support by allowing them to select the coverage to meet their unique requirements.



* Maintenance service availability may vary by country.